

LOC/DME I-RBD 110.75 Chan 44 (Y)	APP CRS 309°	Rwy Idg TDZE Apt Elev 6601 660 661
--	------------------------	--

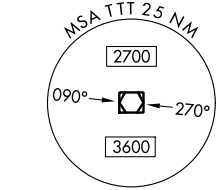
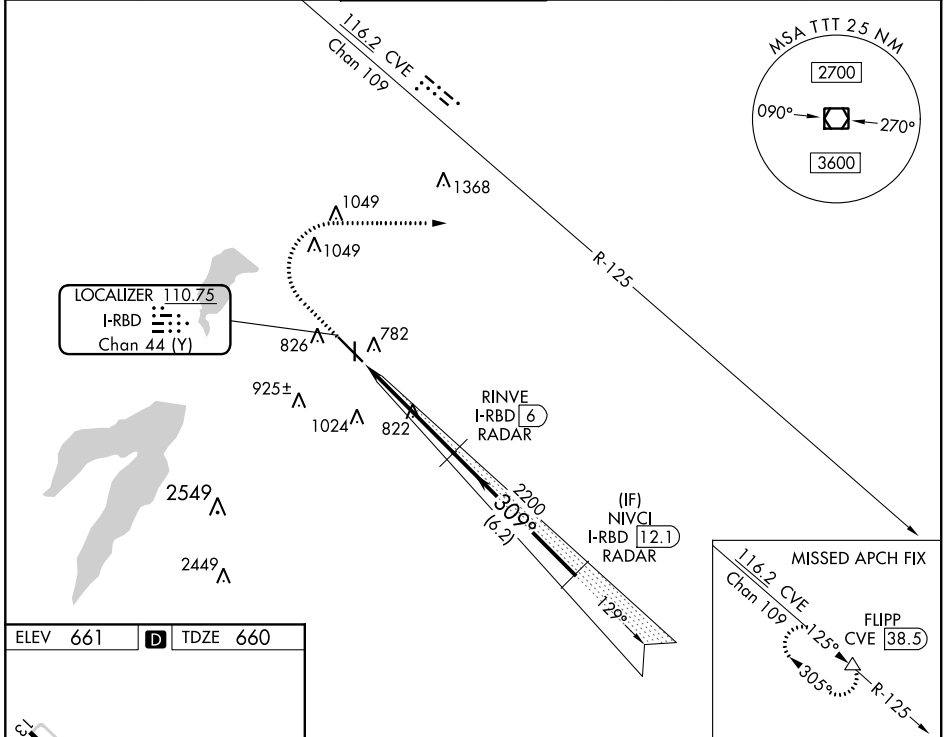
ILS or LOC RWY 31

DALLAS EXEC (RBD)

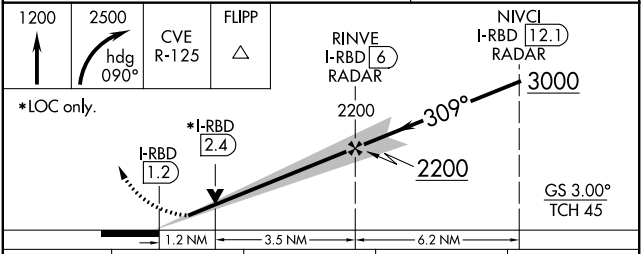
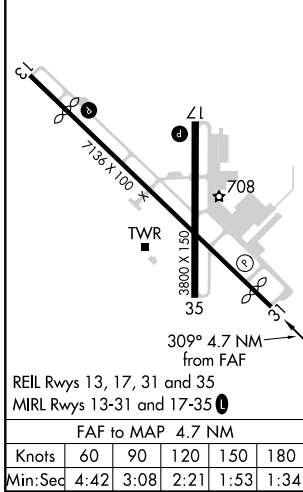
RADAR required for procedure entry, DME or RADAR required for LOC only.

MISSED APPROACH: Climb to 2500 then climbing right turn to 3000 on heading 090° and CVE
VOR/DME R-125 to FLIPP/CVE 38.5 DME and hold.

ATIS 126.35	REGIONAL APP CON 125.2 343.65	EXECUTIVE TOWER* 127.25 (CTAF) 0	GND CON 119.475	CLNC DEL 118.625	UNICOM 122.95
-----------------------	---	---	---------------------------	----------------------------	-------------------------



ELEV 661	D	TDZE 660
----------	----------	----------



CATEGORY	A	B	C	D
S-ILS 31	860-3/4 200 (200-3/4)			
S-LOC 31	1080-1 420 (500-1)	1080-1 1/8 420 (500-1 1/8)		
C CIRCLING	1160-1 499 (500-1)	1220-1 559 (600-1)	1340-2 679 (700-2)	1400-2 1/4 739 (800-2 1/4)

SC-2, 16 JUN 2022 to 14 JUL 2022

SC-2, 16 JUN 2022 to 14 JUL 2022