

VOR/DME CVE <b>116.2</b> Chan <b>109</b>	APP CRS <b>165°</b>	Rwy Idg <b>3800</b> TDZE <b>658</b> Apt Elev <b>661</b>
--	------------------------	---

# VOR RWY 17

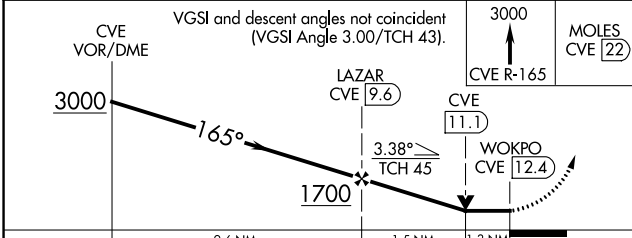
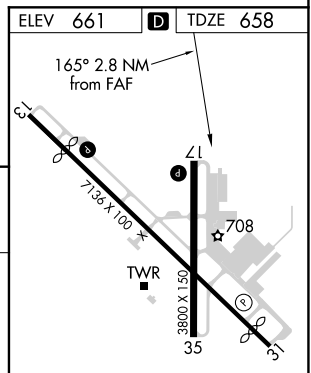
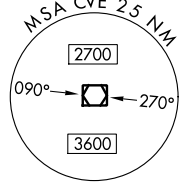
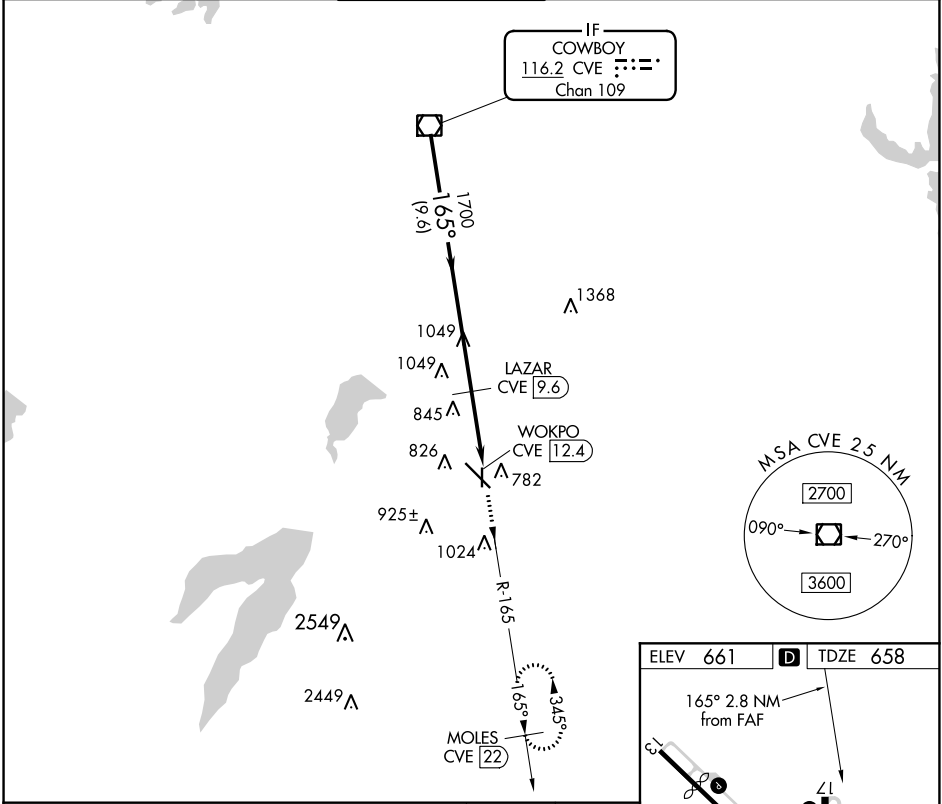
DALLAS EXEC (RBD)

DME required. RADAR required for procedure entry.

**⚠** Rwy 17 helicopter visibility reduction below 3/4 SM NA.

MISSED APPROACH: Climb to 3000 on CVE  
VOR/DME R-165 to MOLES/22 DME and hold.

ATIS <b>126.35</b>	REGIONAL APP CON <b>125.2 343.65</b>	EXECUTIVE TOWER * <b>127.25 (CTAF)</b>	GND CON <b>119.475</b>	CLNC DEL <b>118.625</b>	UNICOM <b>122.95</b>
-----------------------	---	---	---------------------------	----------------------------	-------------------------



CATEGORY	A	B	C	D
S-17	1120-1	462 (500-1)	1120-1¼	462 (500-1¼)
<b>C</b> CIRCLING	1160-1 499 (500-1)	1220-1 559 (600-1)	1340-2 679 (700-2)	1400-2¼ 739 (800-2¼)

REIL Rwy 13, 17, 31 and 35  
MIRL Rwy 13-31 and 17-35

SC-2, 16 JUN 2022 to 14 JUL 2022

SC-2, 16 JUN 2022 to 14 JUL 2022