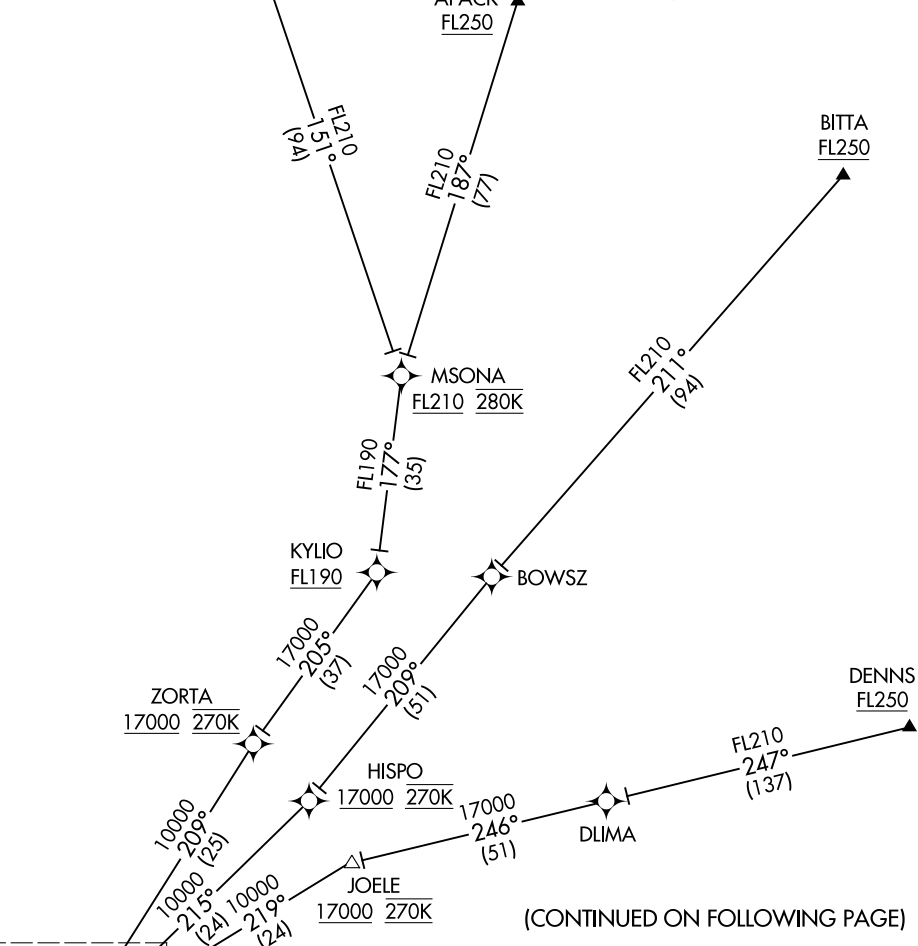


# INOYI ONE ARRIVAL (RNAV) Transition Routes

HCF CENTER  
127.6 291.6 (APACK, ZIGIE)  
126.6 284.6 (BITTA, DENNS)  
HONOLULU TOWER  
118.1 257.8  
123.9 273.575 (Rwy 8R/26L)  
D-ATIS  
127.9 251.15

NOTE: RADAR required.  
NOTE: RNAV 1.  
NOTE: GPS required.  
NOTE: Turbojet and turboprop aircraft only.  
NOTE: Turbojet aircraft descend via mach number until transition to 280K. Maintain 280K until slowed by the STAR.



(CONTINUED ON FOLLOWING PAGE)

- APACK TRANSITION (APACK.INOY11)
- BITTA TRANSITION (BITTA.INOY11)
- DENNS TRANSITION (DENNS.INOY11)
- JOELE TRANSITION (JOELE.INOY11)
- ZIGIE TRANSITION (ZIGIE.INOY11)

See following page for Arrival Routes.

NOTE: Chart not to scale.

PAC, 19 MAY 2022 to 14 JUL 2022

PAC, 19 MAY 2022 to 14 JUL 2022

# INOYI ONE ARRIVAL (RNAV) Transition Routes