

LOC/DME I-HUM 110.5 Chan 42	APP CRS 042°	Rwy Idg 8950 TDZE 9 Apt Elev 13
-------------------------------------------------	------------------------	------------------------------------------------------------

ILS Y RWY 4R

DANIEL K INOUEY INTL (HNL) (PHNL)

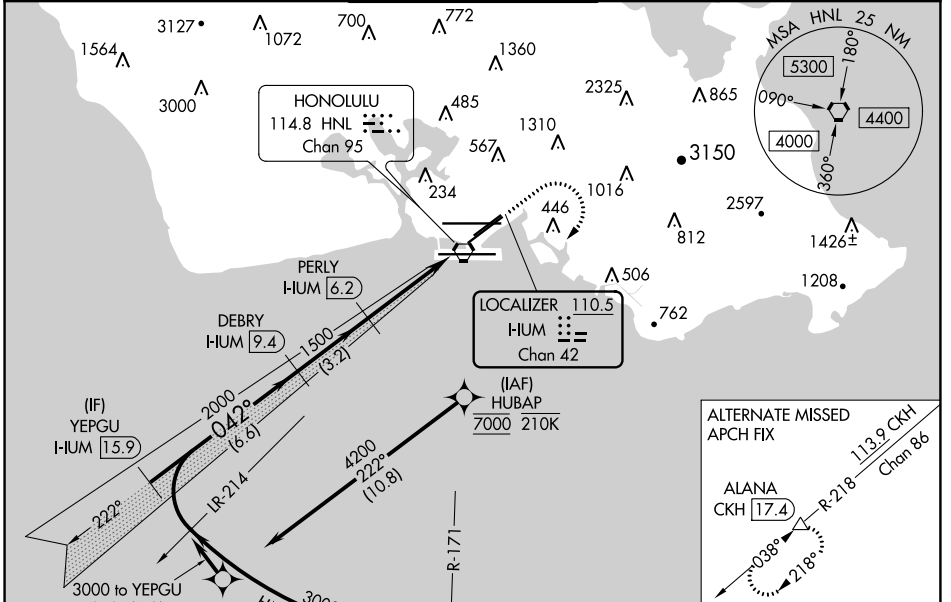
DME required. From HUBAP: RNAV 1-GPS required. DME or RADAR required for procedure entry.

For inop ALS, increase S-ILS 4R all Cats visibility to 7/8 SM.

MALSRS

MISSED APPROACH: Climb to 540 then climbing right turn to 3000 on heading 220° and on HNL VORTAC R-171 to ALANA INT/HNL 13.9 DME and hold. *Missed approach requires minimum climb of 318 feet per NM to 1820. (If unable to meet climb gradient use S-ILS 4R minimums).

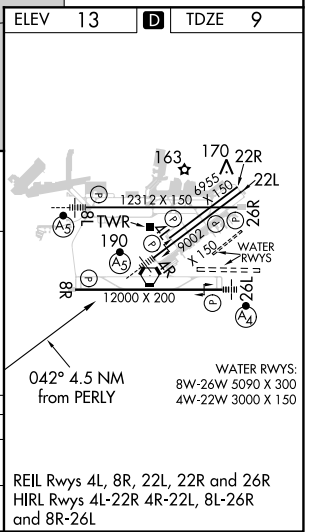
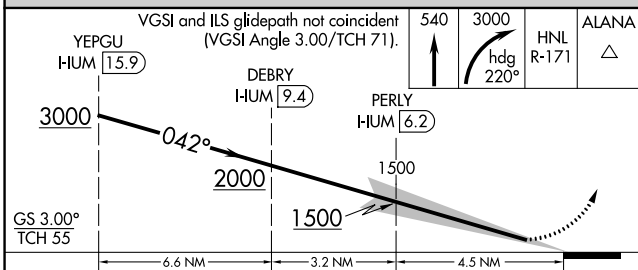
D-ATIS 127.9 251.15	HCF APPROACH 118.3 269.0	HONOLULU TOWER 118.1 257.8 123.9 273.575 (Rwy 8R/26L)	GND CON 121.9 348.6	CLNC DEL 121.4 281.4
-------------------------------	------------------------------------	---------------------------------------------------------------------------	-------------------------------	--------------------------------



PAC, 19 MAY 2022 to 14 JUL 2022

PAC, 19 MAY 2022 to 14 JUL 2022

ELEV 13	D	TDZE 9
---------	----------	--------



CATEGORY	A	B	C	D
S-ILS 4R*		209-1/2	200 (200-1/2)	
S-ILS 4R		308-1/2	299 (300-1/2)	