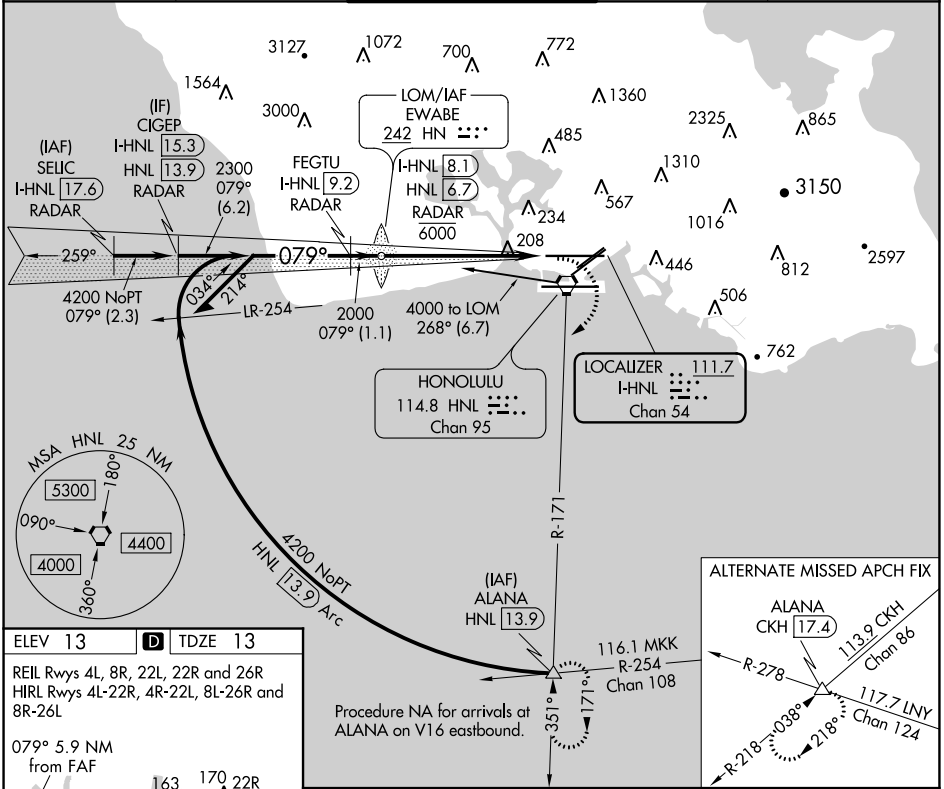


LOC/DME I-HNHL 111.7 Chan 54	APP CRS 079°	Rwy Idg 12312 TDZE 13 Apt Elev 13
---	------------------------	--

LOC RWY 8L

DANIEL K INOUEY INTL (HNL) (PHNL)

DME or RADAR required.		MALSRS	MISSED APPROACH: Climbing right turn to 5000 on heading 200° and HNL VORTAC R-171 to ALANA INT/HNL 13.9 DME and hold, continue climb-in-hold to 5000.	
<p>▼ Circling Rwy 22R NA at night. Circling NA for Cats A and B northwest of Rwy 8L and 22R. Circling NA for Cats C and D north of Rwy 8L-26R. Circling NA to sea lanes 4W, 8W, 22W, and 26W.</p>				
D-ATIS 127.9 251.15	HCF APPROACH 118.3 269.0	HONOLULU TOWER 118.1 257.8 123.9 273.575 (Rwy 8R/26L)	GND CON 121.9 348.6	CLNC DEL 121.4 281.4



ELEV 13	D	TDZE 13			
REIL Rws 4L, 8R, 22L, 22R and 26R HIRL Rws 4L-22R, 4R-22L, 8L-26R and 8R-26L					
079° 5.9 NM from FAF					
<p>WATER RWYS: 8W-26W 5090 X 300 4W-22W 3000 X 150</p>					
FAF to MAP 5.9 NM					
Knots	60	90	120	150	180
Min:Sec	5:54	3:56	2:57	2:22	1:58
☑ CIRCLING	680-1 667 (700-1)	760-1 747 (800-1)	820-2¼ 807 (900-2¼)	1400-3 1387 (1400-3)	

Remain within 10 NM 3900 259° FEGTU I-HNHL 9.2 RADAR 079° Use I-HNHL DME when on the localizer course. 2300 2000 3.08° TCH 55 1.1 NM 5.9 NM I-HNHL 8.1 /RADAR 6000 5000 hdg 200° HNL R-171 ALANA	<table border="1"> <tr> <th>CATEGORY</th> <th>A</th> <th>B</th> <th>C</th> <th>D</th> </tr> <tr> <td>S-8L</td> <td>460-½</td> <td>447 (500-½)</td> <td>460-¾</td> <td>447 (500-¾)</td> </tr> </table>				CATEGORY	A	B	C	D	S-8L	460-½	447 (500-½)	460-¾	447 (500-¾)
	CATEGORY	A	B	C	D									
S-8L	460-½	447 (500-½)	460-¾	447 (500-¾)										
	<table border="1"> <tr> <th>CATEGORY</th> <th>A</th> <th>B</th> <th>C</th> <th>D</th> </tr> <tr> <td>S-8L</td> <td>460-½</td> <td>447 (500-½)</td> <td>460-¾</td> <td>447 (500-¾)</td> </tr> </table>				CATEGORY	A	B	C	D	S-8L	460-½	447 (500-½)	460-¾	447 (500-¾)
CATEGORY	A	B	C	D										
S-8L	460-½	447 (500-½)	460-¾	447 (500-¾)										

PAC, 19 MAY 2022 to 14 JUL 2022

PAC, 19 MAY 2022 to 14 JUL 2022