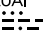


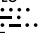
(OPACA.OPACA4) 20030
OPACA FOUR ARRIVAL

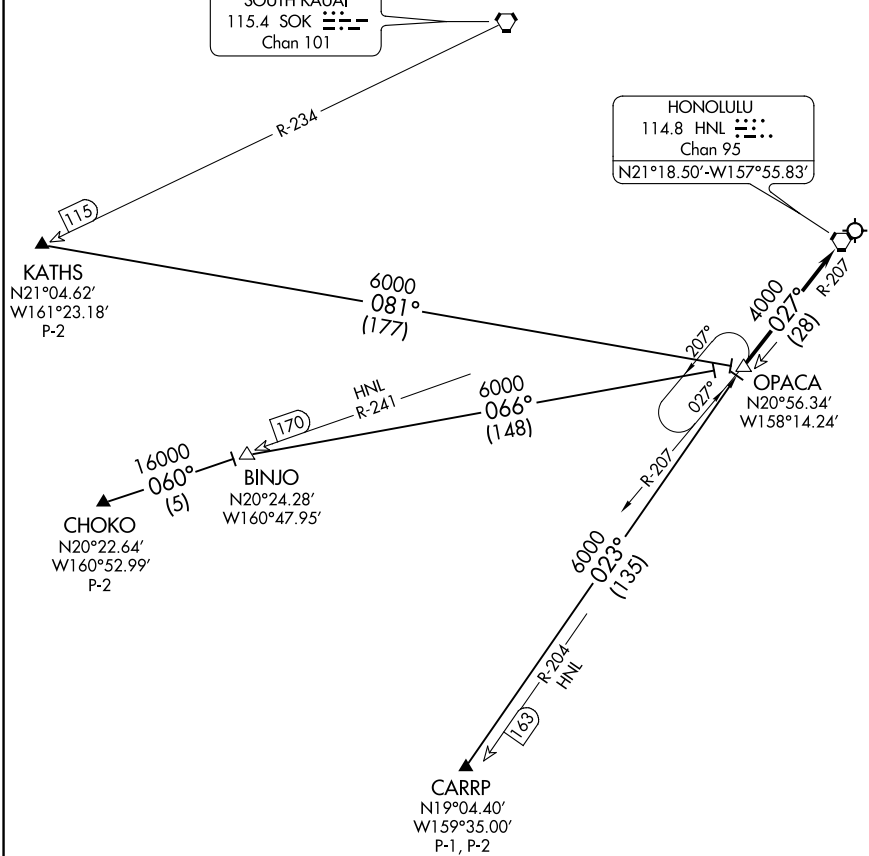
DANIEL K INOUYE INTL (HNL) (PHNL)
 HONOLULU, HAWAII

AL-754 (FAA)

HCF CENTER
 119.9 306.9

SOUTH KAUAI
 115.4 SOK 
 Chan 101

HONOLULU
 114.8 HNL 
 Chan 95
 N21°18.50'-W157°55.83'



NOTE: RNAV equipped aircraft only.

NOTE: Chart not to scale.

ARRIVAL ROUTE DESCRIPTION

CARRP TRANSITION (CARRP.OPACA4): From over CARRP WP, RNAV direct to OPACA DME. Thence. . .

CHOKO TRANSITION (CHOKO.OPACA4): From over CHOKO WP, RNAV direct to BINJO DME, then direct to OPACA DME. Thence. . .

KATHS TRANSITION (KATHS.OPACA4): From over KATHS WP, RNAV direct to OPACA DME. Thence. . .

. . . From over OPACA DME via HNL R-207 to HNL VORTAC, expect RADAR vectors to final approach course.