

# OPIHI THREE DEPARTURE

AL-754 (FAA)

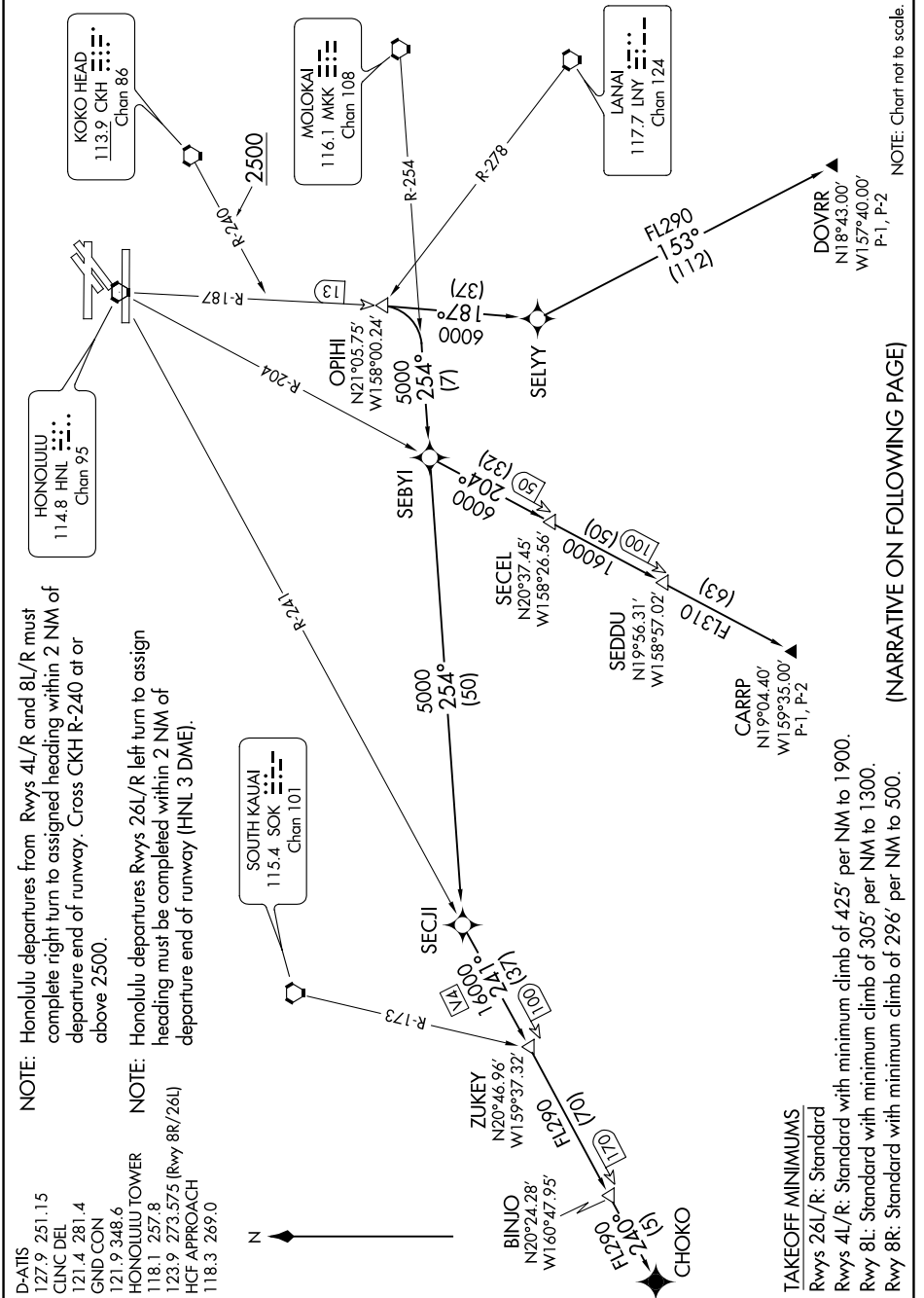
DANIEL K INOUE INTL (HNL) (PHNL)  
HONOLULU, HAWAII

PAC, 19 MAY 2022 to 14 JUL 2022

D-ATIS 127.9 251.15  
 CLNC DEL 121.4 281.4  
 GND CON 121.9 348.6  
 HONOLULU TOWER 118.1 257.8  
 123.9 273.575 (Rwy 8R/26L)  
 HCF APPROACH 118.3 269.0

**NOTE:** Honolulu departures from Rwy 4L/R and 8L/R must complete right turn to assigned heading within 2 NM of departure end of runway. Cross CKH R-240 at or above 2500.

**NOTE:** Honolulu departures Rwy 26L/R left turn to assign heading must be completed within 2 NM of departure end of runway (HNL 3 DME).



NOTE: Chart not to scale.

(NARRATIVE ON FOLLOWING PAGE)

PAC, 19 MAY 2022 to 14 JUL 2022

# OPIHI THREE DEPARTURE