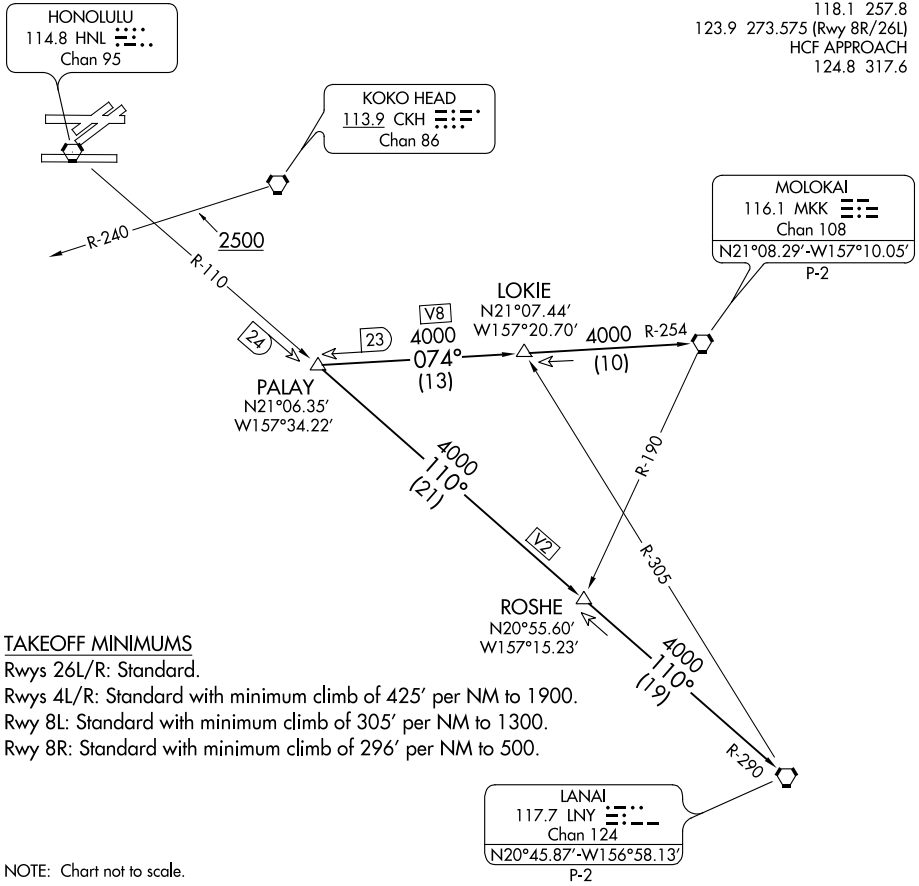


NOTE: Departures from Runways 4L/R and 8L/R must complete right turn to assigned heading within 2 NM of runway departure end. Cross CKH R-240 at or above 2500.
NOTE: Departures Runways 26L/R must complete left turn to assign heading within 2 NM of runway departure end (HNL 3 DME).

D-ATIS 127.9 251.15
CLNC DEL 121.4 281.4
GND CON 121.9 348.6
HONOLULU TOWER 118.1 257.8
123.9 273.575 (Rwy 8R/26L)
HCF APPROACH 124.8 317.6



PAC, 19 MAY 2022 to 14 JUL 2022

PAC, 19 MAY 2022 to 14 JUL 2022

DEPARTURE ROUTE DESCRIPTION

Turn right/left to heading assigned by Tower, expect vectors to PALAY, maintain 5000; then on (transition). Expect clearance to enroute altitude/flight level at LNY VORTAC.

LANAI TRANSITION (PALAY3.LNY): From over PALAY INT on HNL R-110 and LNY R-290 to LNY VORTAC.

MOLOKAI TRANSITION (PALAY3.MKK): From over PALAY INT on MKK R-254 to MKK VORTAC.