

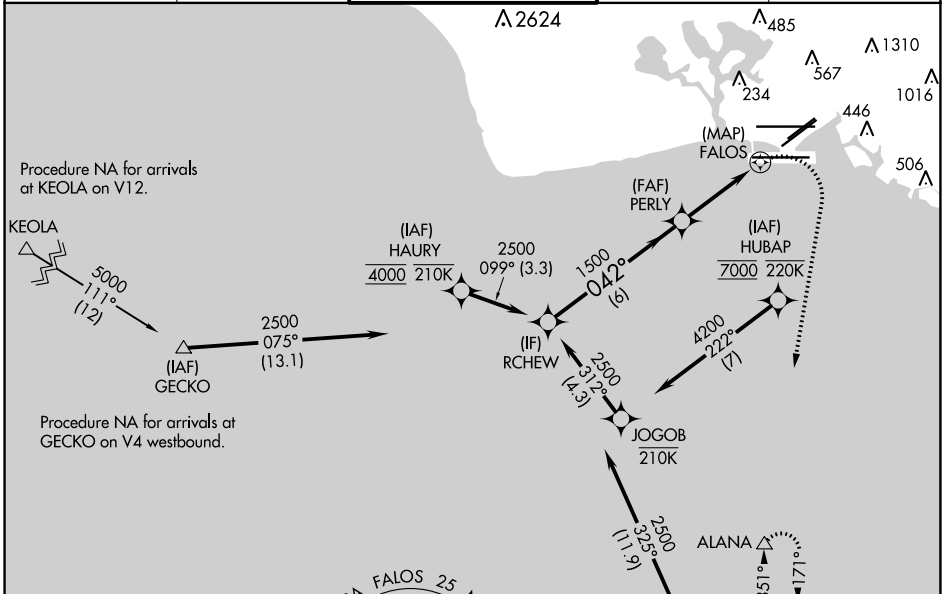
APP CRS	Rwy Idg	<b>8950</b>
<b>042°</b>	TDZE	<b>8</b>
	Apt Elev	<b>13</b>

# RNAV (GPS) Y RWY 4R

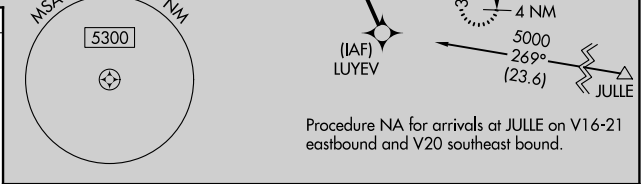
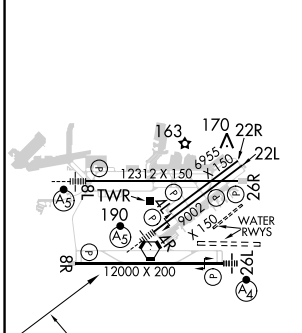
DANIEL K INOUYE INTL (HNL) (PHNL)

RNP APCH.	MALSR	MISSED APPROACH: Climbing right turn to 3000 direct ALANA and hold.
<p><b>▼</b> Circling Rwy 22R NA at night. Circling NA for Cats A and B northwest of Rwy 8L and 22R. Circling NA for Cats C and D north of Rwy 8L-26R. For inop ALS, increase LNAV Cat E visibility to 2 SM. Circling NA to sea lanes 4W, 8W, 22W, and 26W. HUBAP transition NA for Cat E aircraft. HAURY transition NA for Cat E aircraft.</p>		

D-ATIS	HCF APPROACH	HONOLULU TOWER	GND CON	CLNC DEL
<b>127.9 251.15</b>	<b>118.3 269.0</b>	<b>118.1 257.8</b> <b>123.9 273.575</b> (Rwy 8R/26L)	<b>121.9 348.6</b>	<b>121.4 281.4</b>



ELEV 13	<b>D</b>	TDZE 8
---------	----------	--------



	3000	ALANA
	1.3 NM to FALOS	FALOS
	6 NM	2.2 NM
	1.3 NM	1 NM

CATEGORY	A	B	C	D	E
LNAV MDA	460-3/4	452 (500-3/4)	460-7/8	452 (500-7/8)	460-13/4
<b>C</b> CIRCLING	680-11/4	760-11/4	820-21/4	1400-3	NA
	667 (700-11/4)	747 (800-11/4)	807 (900-21/4)	1387 (1400-3)	

PAC, 19 MAY 2022 to 14 JUL 2022

PAC, 19 MAY 2022 to 14 JUL 2022