

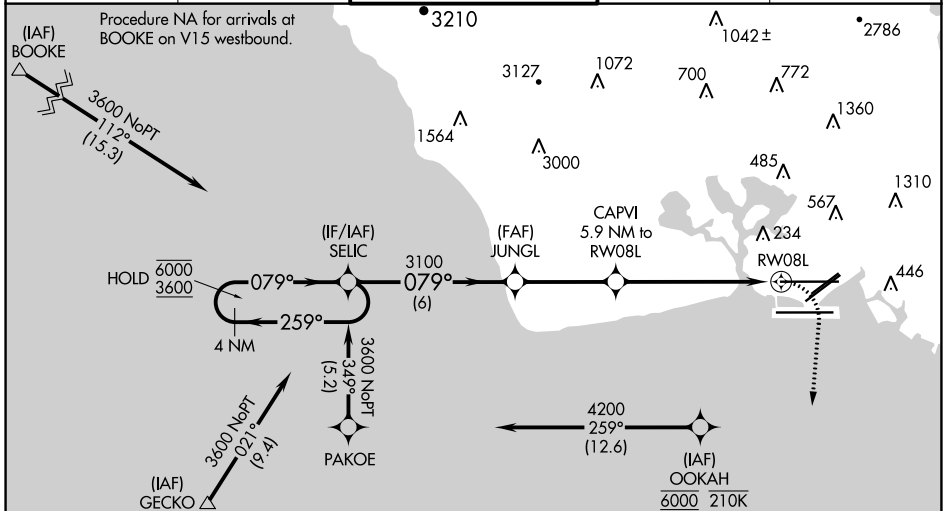
APP CRS	Rwy Idg <b>12312</b>
<b>079°</b>	TDZE <b>13</b>
	Apt Elev <b>13</b>

# RNAV (GPS) Y RWY 8L

DANIEL K INOUYE INTL (HNL) (PHNL)

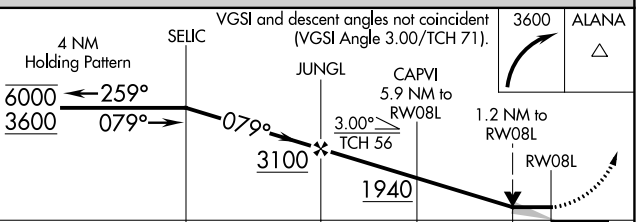
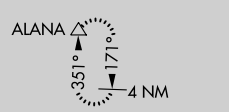
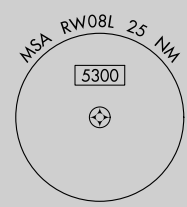
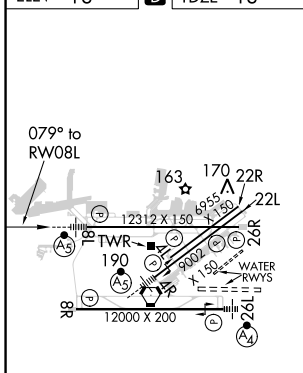
RNP APCH.	MALSR	MISSED APPROACH: Climbing right turn to 3600 direct ALANA and hold, continue climb-in-hold to 3600.
<p><b>▼</b> Circling Rwy 22R NA at night. For inop ALS, increase Cats C, D, and E visibility to 1 3/8 SM. Circling NA to sea lanes 4W, 8W, 22W, and 26W. Circling NA for Cats A and B northwest of Rwy 8L-22R. Circling NA for Cats C and D north of Rwy 8L-26R. OOKAH transition NA for Cat E aircraft.</p>		

D-ATIS	HCF APPROACH	HONOLULU TOWER	GND CON	CLNC DEL
<b>127.9 251.15</b>	<b>118.3 269.0</b>	<b>118.1 257.8</b> <b>123.9 273.575</b> (Rwy 8R/26L)	<b>121.9 348.6</b>	<b>121.4 281.4</b>



Procedure NA for arrivals at GECKO on V16 northwest bound and V4 southwest bound.

ELEV 13	<b>D</b>	TDZE 13
---------	----------	---------



CATEGORY	A	B	C	D	E
LNNAV MDA	480-1/2	467 (500-1/2)	480-1	467 (500-1)	
<b>C</b> CIRCLING	500-1 487 (500-1)	640-1 627 (700-1)	760-2 1/4 747 (800-2 1/4)	1260-3 1247 (1300-3)	NA

PAC, 19 MAY 2022 to 14 JUL 2022

PAC, 19 MAY 2022 to 14 JUL 2022