

(SYMIN.SYMIN1) 20030

SYMIN ONE ARRIVAL (RNAV)

AL-754 (FAA)

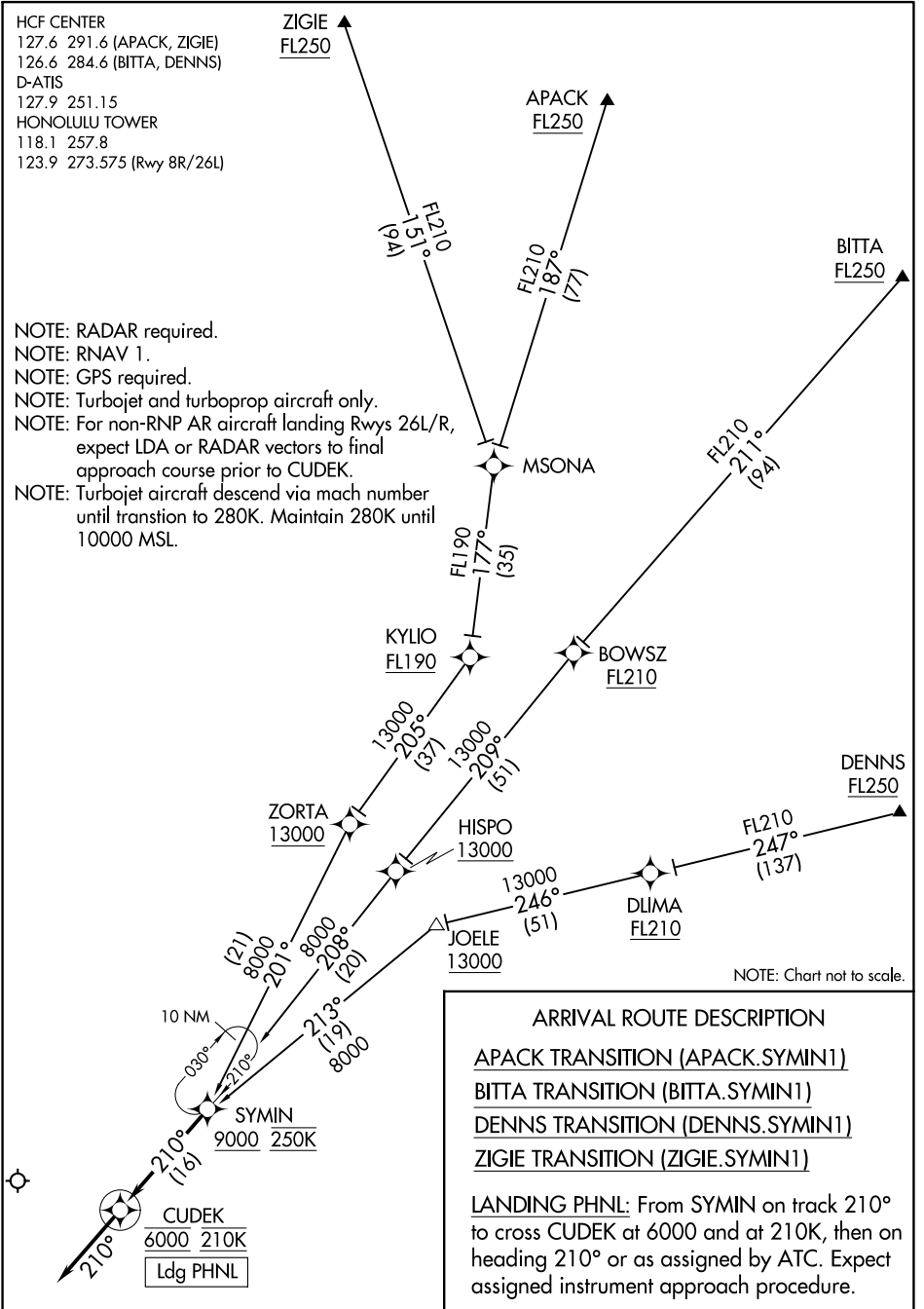
DANIEL K INOUYE INTL (HNL) (PHNL)
HONOLULU, HAWAII

HCF CENTER
127.6 291.6 (APACK, ZIGIE)
126.6 284.6 (BITTA, DENNS)
D-ATIS
127.9 251.15
HONOLULU TOWER
118.1 257.8
123.9 273.575 (Rwy 8R/26L)

NOTE: RADAR required.
NOTE: RNAV 1.
NOTE: GPS required.
NOTE: Turbojet and turboprop aircraft only.
NOTE: For non-RNP AR aircraft landing Rwy 26L/R, expect LDA or RADAR vectors to final approach course prior to CUDEK.
NOTE: Turbojet aircraft descend via mach number until transtion to 280K. Maintain 280K until 10000 MSL.

PAC: 19 MAY 2022 to 14 JUL 2022

PAC: 19 MAY 2022 to 14 JUL 2022



SYMIN ONE ARRIVAL (RNAV)

(SYMIN.SYMIN1) 30JAN20

HONOLULU, HAWAII
DANIEL K INOUYE INTL (HNL) (PHNL)