

VORTAC HNL 114.8 Chan 95	APP CRS 018°	Rwy Idg TDZE Apt Elev	8950 8 13
--	------------------------	-----------------------------	--------------------------------------

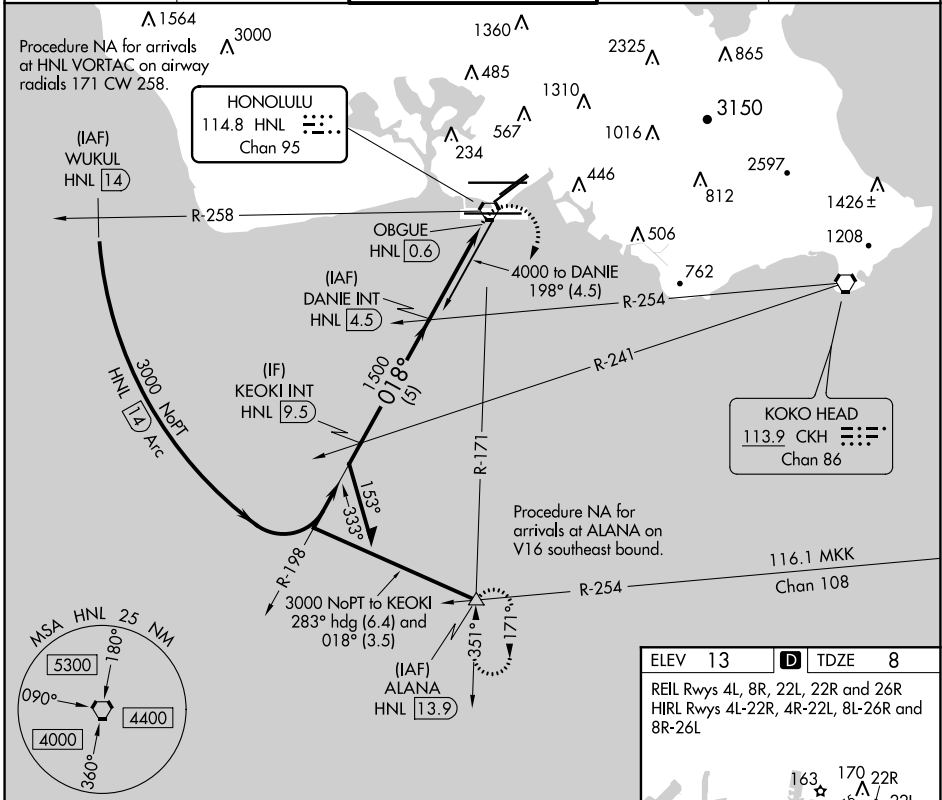
VOR or TACAN RWY 4R

DANIEL K INOUYE INTL (HNL) (PHNL)

▼ Circling Rwy 22R NA at night. Inop table does not apply. Circling NA for Cats A and B northwest of Rws 8L and 22R. Circling NA for Cats C and D north of Rwy 8L-26R. Circling NA to sea lanes 4W, 8W, 22W, and 26W.

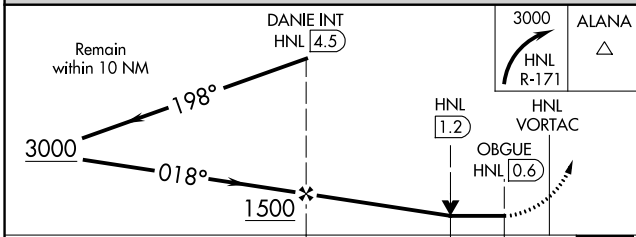
⚠ MISSED APPROACH: Climbing right turn to 3000 on HNL VORTAC R-171 to ALANA INT/HNL 13.9 DME and hold.

D-ATIS 127.9 251.15	HCF APPROACH 118.3 269.0	HONOLULU TOWER 118.1 257.8 123.9 273.575 (Rwy 8R/26L)	GND CON 121.9 348.6	CLNC DEL 121.4 281.4
-------------------------------	------------------------------------	---	-------------------------------	--------------------------------



PAC, 19 MAY 2022 to 14 JUL 2022

PAC, 19 MAY 2022 to 14 JUL 2022



ELEV 13	D TDZE 8
REIL Rws 4L, 8R, 22L, 22R and 26R	
HIRL Rws 4L-22R, 4R-22L, 8L-26R and 8R-26L	

Diagram details:

- Runways: 4L, 8R, 22L, 22R, 26R, 4R, 22L, 8L-26R, 8R-26L.
- Water Runways: 8W-26W 5090 X 300, 4W-22W 3000 X 150.
- Other: TWWR 190, 12312 X 150, 6935, 130, 26R, 26L, 24L, 24R, 291, 290, 150, 12000 X 200.
- Navigation: 018° 4.8 NM from FAF.

FAF to MAP 3.9 NM					
Knots	60	90	120	150	180
Min:Sec	3:54	2:36	1:57	1:34	1:18

CATEGORY	A	B	C	D
S-4R	460-1	452 (500-1)	460-1¼ 452 (500-1¼)	460-1½ 452 (500-1½)
C CIRCLING	680-1¼ 667 (700-1¼)	760-1¼ 747 (800-1¼)	820-2¼ 807 (900-2¼)	1400-3 1387 (1400-3)