

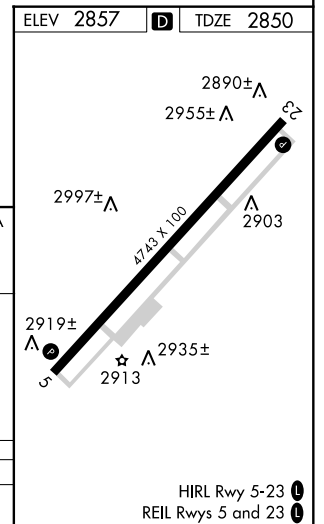
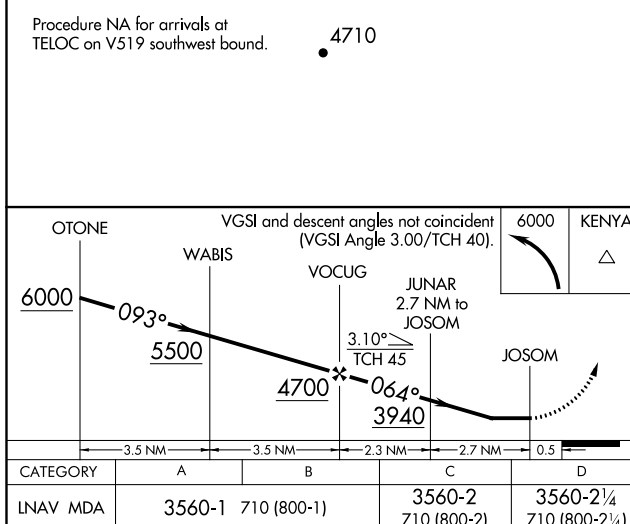
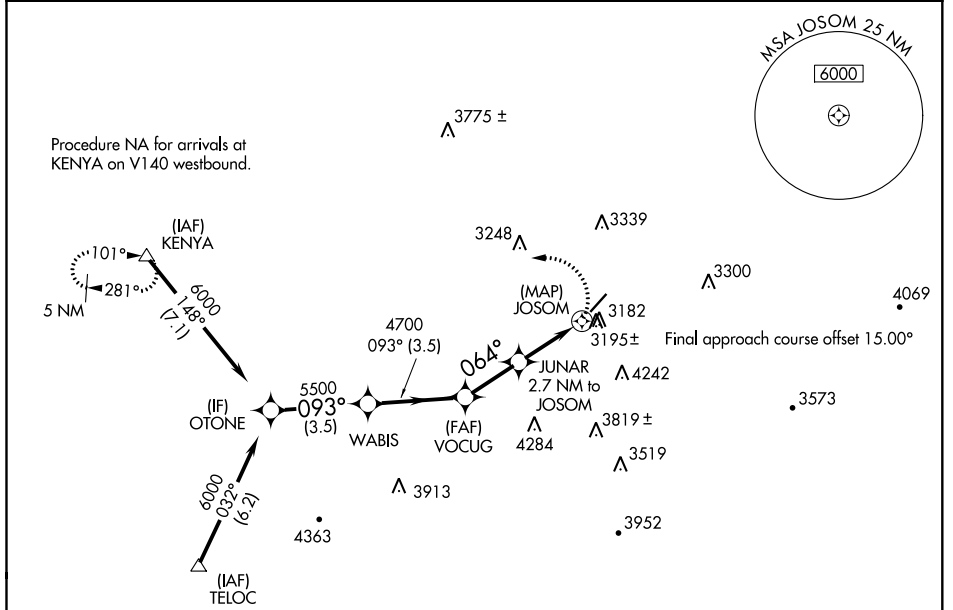
APP CRS 064°	Rwy Idg 4743
	TDZE 2850
	Apt Elev 2857

RNAV (GPS) RWY 5

MERCER COUNTY (BLF)

RNP APCH.	MISSED APPROACH: Climbing left turn to 6000 direct KENYA and hold.
<p>Procedure NA at night. Rwy 5 helicopter visibility reduction below 1 SM NA.</p>	

ASOS 132.725	INDIANAPOLIS CENTER 126.575 257.85	CTAF 122.9
------------------------	--	----------------------



CATEGORY	A	B	C	D
LNAV MDA	3560-1	710 (800-1)	3560-2 710 (800-2)	3560-2¼ 710 (800-2¼)

HIRL Rwy 5-23
REIL Rws 5 and 23

NE-4, 16 JUN 2022 to 14 JUL 2022

NE-4, 16 JUN 2022 to 14 JUL 2022