

VOR/DME BLF 110.0 Chan 37	APP CRS 225°	Rwy Idg TDZE Apt Elev	4743 2857 2857
---	------------------------	-----------------------------	---

VOR RWY 23

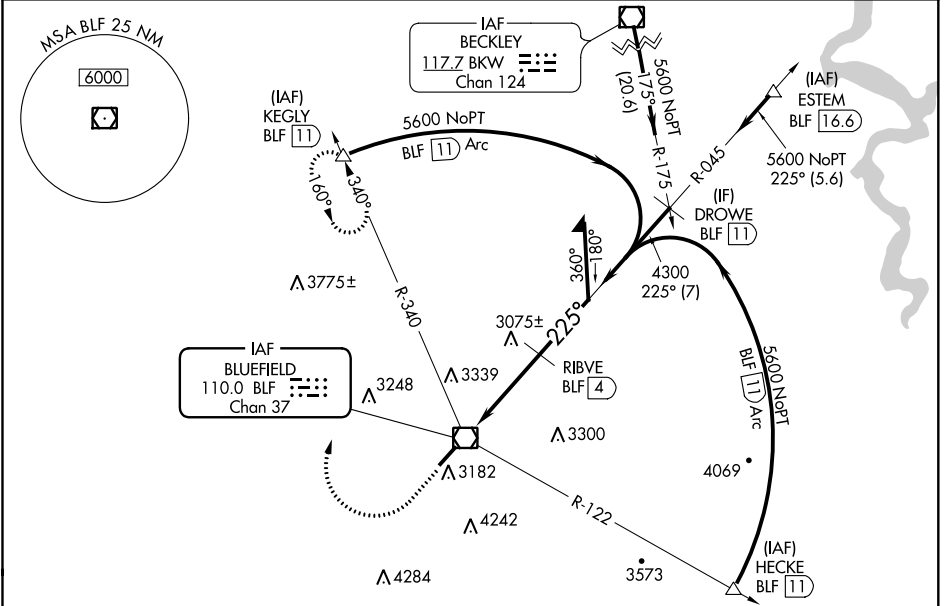
MERCER COUNTY (BLF)

DME required.

When local altimeter setting not received, use Beckley altimeter setting and increase all MDAs 460 feet: increase S-23 visibility Cat A ¼ SM, Cat B ½ SM, Cat C 1 ½ SM, Cat D 1 ¼ SM; increase Circling visibility Cat A ¼ SM, Cat B ½ SM, Cat C ¾ SM. VDP NA when using Beckley altimeter setting. Circling NA southeast of Rwy 5-23.

MISSED APPROACH: Climb to 3800 then climbing right turn to 6000 on heading 020° and BLF R-340 to KEGLY/BLF 11 DME and hold.

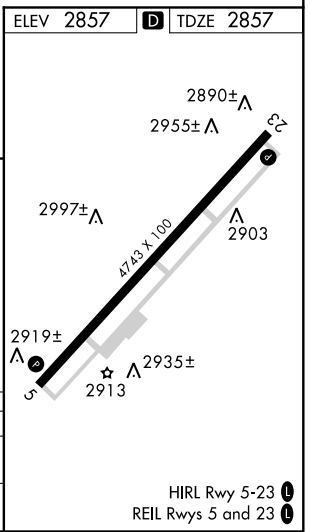
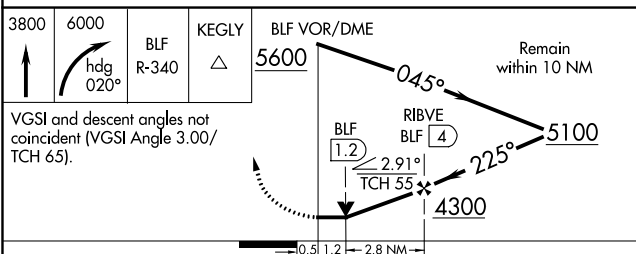
ASOS 132.725	INDIANAPOLIS CENTER 126.575 257.85	CTAF 122.9
------------------------	--	----------------------



NE-4, 16 JUN 2022 to 14 JUL 2022

NE-4, 16 JUN 2022 to 14 JUL 2022

ELEV 2857	TDZE 2857
-----------	-----------



CATEGORY	A	B	C	D
S-23	3440-1	583 (600-1)	3440-1 ½ 583 (600-1 ½)	3440-1 ¾ 583 (600-1 ¾)
CIRCLING	3440-1 583 (600-1)	3460-1 603 (700-1)	3640-2 ¼ 783 (800-2 ¼)	3780-3 923 (1000-3)

HIRL Rwy 5-23
REIL Rws 5 and 23