

WAAS CH 90241 W35A	APP CRS 349°	Rwy Idg TDZE Apt Elev	7000 5274 5274
--	------------------------	-----------------------------	---

RNAV (GPS) Z RWY 35

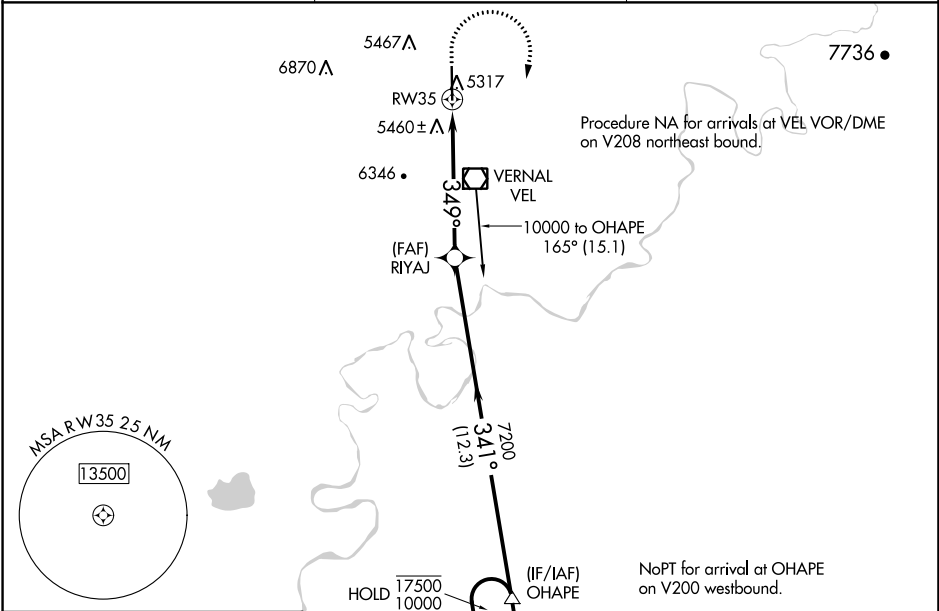
VERNAL RGNL (VEL)

RNP APCH.

- ▼** Rwy 35 helicopter visibility reduction below ¼ SM NA.
- ▲** For uncompensated Baro-VNAV systems, procedure NA below -21°C or above 54°C.

MISSED APPROACH: Climb to 7000 then climbing right turn to 10000 direct OHAPE and hold.
*Missed approach requires minimum climb of 290 feet per NM to 8600.

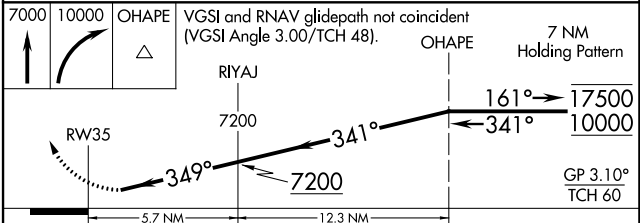
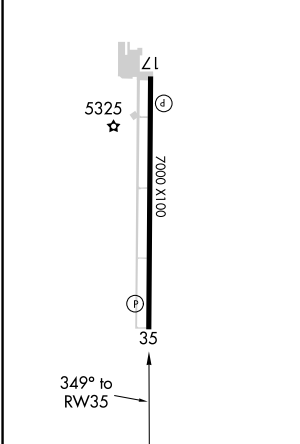
ASOS 118.125	SALT LAKE CENTER 119.95 377.15	UNICOM 122.7 (CTAF)
------------------------	--	-------------------------------



SW-4, 16 JUN 2022 to 14 JUL 2022

SW-4, 16 JUN 2022 to 14 JUL 2022

ELEV 5274	D	TDZE 5274
REIL Rws 17 and 35		
MIRL Rwy 17-35		



CATEGORY	A	B	C	D
LPV DA*		5610-1	336 (400-1)	
LPV DA		6175-2½	901 (1000-2½)	
INAV/VNAV DA*		5786-1⅜	512 (600-1⅜)	
INAV/VNAV DA		6093-2½	819 (900-2½)	