

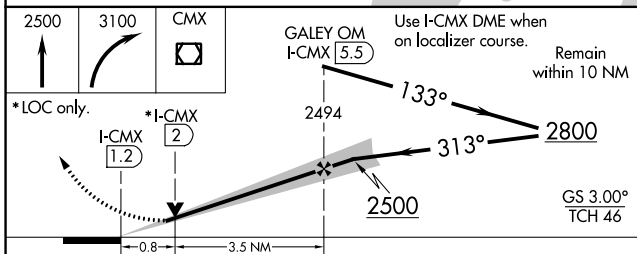
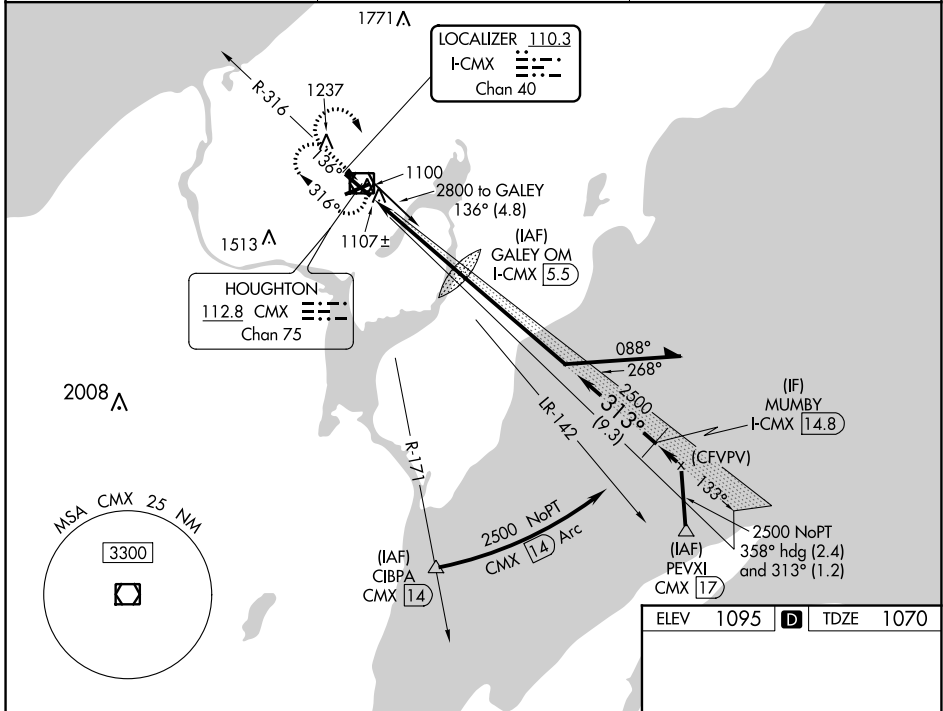
LOC/DME I-CMX 110.3 Chan 40	APP CRS 313°	Rwy ldg TDZE Apt Elev 6500 1070 1095
---	------------------------	--

ILS or LOC RWY 31

HOUGHTON COUNTY MEML (CMX)

DME required for procedure entry.		MALSR 	MISSED APPROACH: Climb to 2500 then climbing right turn to 3100 direct CMX VOR/DME and hold.

ASOS 125.675	MINNEAPOLIS CENTER 133.55 379.1	UNICOM 122.7 (CTAF) 0
------------------------	---	---------------------------------



CATEGORY	A	B	C	D
S-ILS 31		1270-½	200 (200-½)	
S-LOC 31		1360-½	290 (300-½)	
C CIRCLING	1560-1 465 (500-1)	1600-1 505 (600-1)	1680-1½ 585 (700-1½)	1820-2¼ 725 (800-2¼)

ELEV 1095	D	TDZE 1070			
MIRL Rwy 7-25 0 HIRL Rwy 13-31 0 REIL Rwy 7, 13, and 25 0 from FAF					
FAF to MAP 4.3 NM					
Knots	60	90	120	150	180
Min:Sec	4:18	2:52	2:09	1:43	1:26

EC-1, 16 JUN 2022 to 14 JUL 2022

EC-1, 16 JUN 2022 to 14 JUL 2022