

LOC I-CMX 110.3 Chan 40	APP CRS 133°	Rwy Idg 6500 TDZE 1095 Apt Elev 1095
---	------------------------	---

LOC BC RWY 13

HOUGHTON COUNTY MEML (CMX)

DME required.

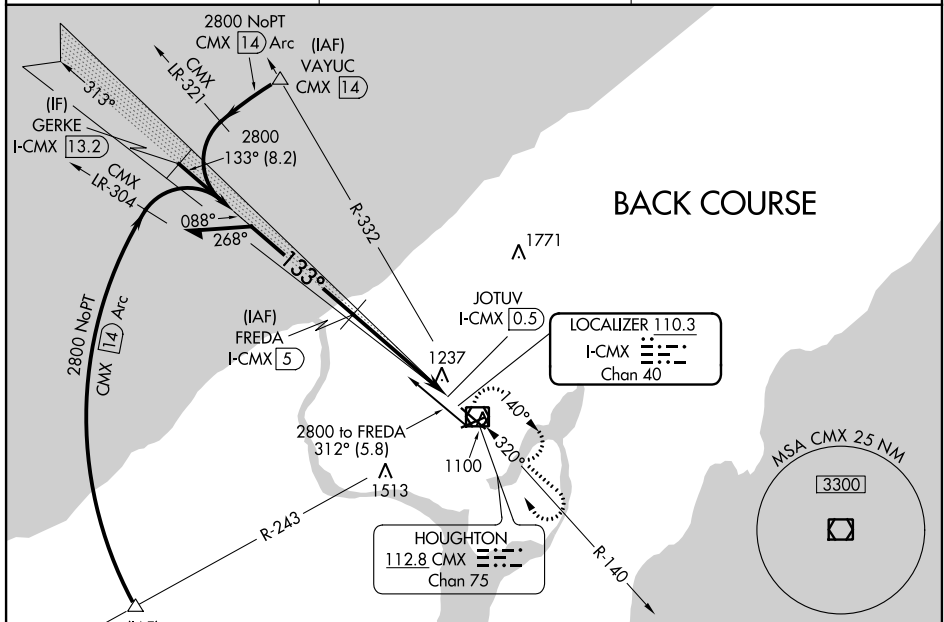
⚠ Rwy 13 helicopter visibility reduction below $\frac{3}{4}$ SM NA.
Request MRL Rwy 7-25 - CTAF.

MISSED APPROACH: Climb to 3100 then right turn direct CMX VOR/DME and hold.

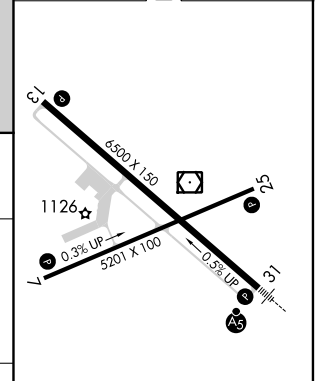
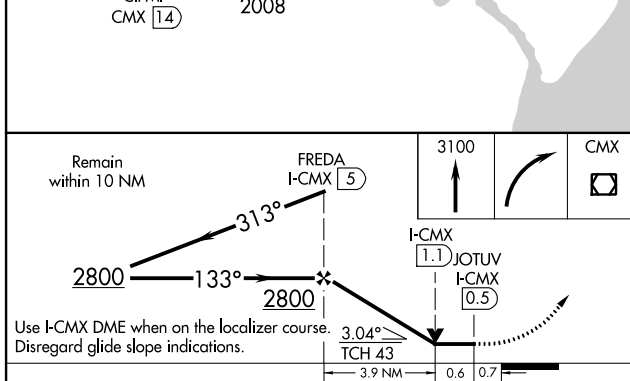
ASOS
125.675

MINNEAPOLIS CENTER
133.55 379.1

UNICOM
122.7 (CTAF) 0



ELEV 1095 **D** TDZE 1095



CATEGORY	A	B	C	D
S- LOC 13	1540-1	445 (500-1)	1540-1½ 445 (500-1½)	1540-1½ 445 (500-1½)
C CIRCLING	1560-1 465 (500-1)	1600-1 505 (600-1)	1680-1½ 585 (600-1½)	1820-2¼ 725 (700-2¼)

MRL Rwy 7-25 **0**
REIL Rws 7, 13 and 25 **0**
HIRL Rwy 13-31 **0**

EC-1, 16 JUN 2022 to 14 JUL 2022

EC-1, 16 JUN 2022 to 14 JUL 2022