

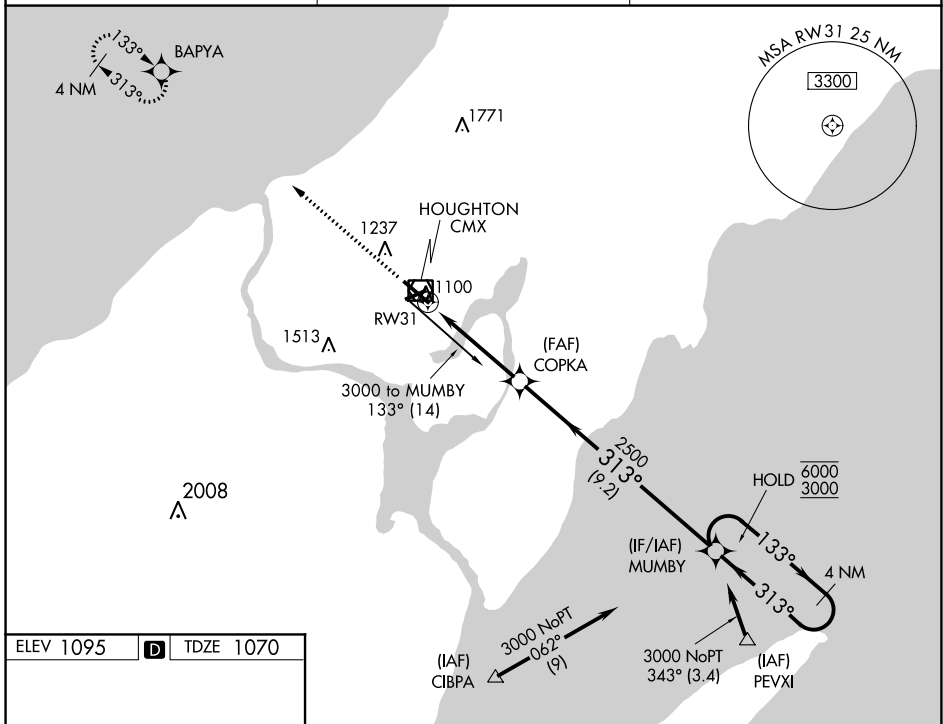
WAAS CH 45809 W31A	APP CRS 313°	Rwy Idg 6500 TDZE 1070 Apt Elev 1095
--	------------------------	---

RNAV (GPS) RWY 31

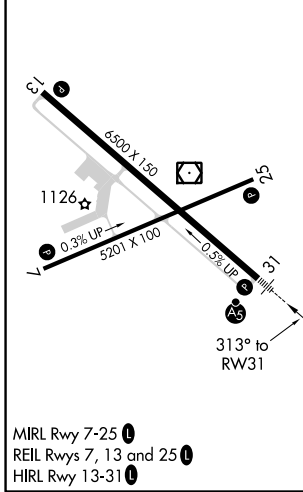
HOUGHTON COUNTY MEML (CMX)

RNP APCH.	MALSR	MISSED APPROACH: Climb to 3700 direct BAPYA and hold.
<p>⚠ Inop table does not apply to LNAV Cat D. For uncompensated Baro-VNAV systems, LNAV/VNAV NA below -17°C or above 46°C. For inop ALS, increase LPV visibility all Cats to 1 SM, increase LNAV/VNAV Cat D visibility to 1 SM.</p>		

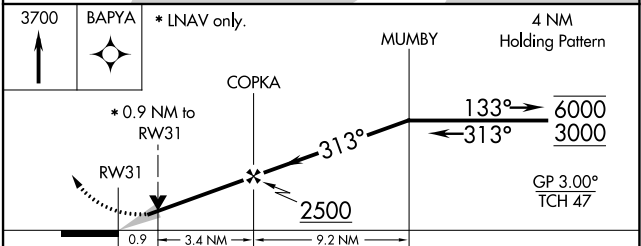
ASOS 125.675	MINNEAPOLIS CENTER 133.55 379.1	UNICOM 122.7 (CTAF)
------------------------	---	-------------------------------



ELEV 1095	D	TDZE 1070
-----------	---	-----------



MIRL Rwy 7-25
REIL Rwy 7, 13 and 25
HIRL Rwy 13-31



CATEGORY	A	B	C	D
LPV DA	1320-1/2 250 (300-1/2)			
LNAV/VNAV DA	1367-1/2 297 (300-1/2)			1367-3/4 297 (300-3/4)
LNAV MDA	1420-1/2 350 (400-1/2)			1420-1 350 (400-1)
<input checked="" type="checkbox"/> CIRCLING	1560-1 465 (500-1)	1600-1 505 (600-1)	1680-1 1/2 585 (600-1 1/2)	1820-2 1/4 725 (700-2 1/4)

EC-1, 16 JUN 2022 to 14 JUL 2022

EC-1, 16 JUN 2022 to 14 JUL 2022