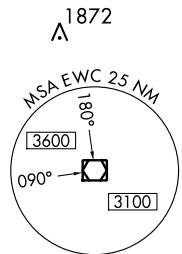
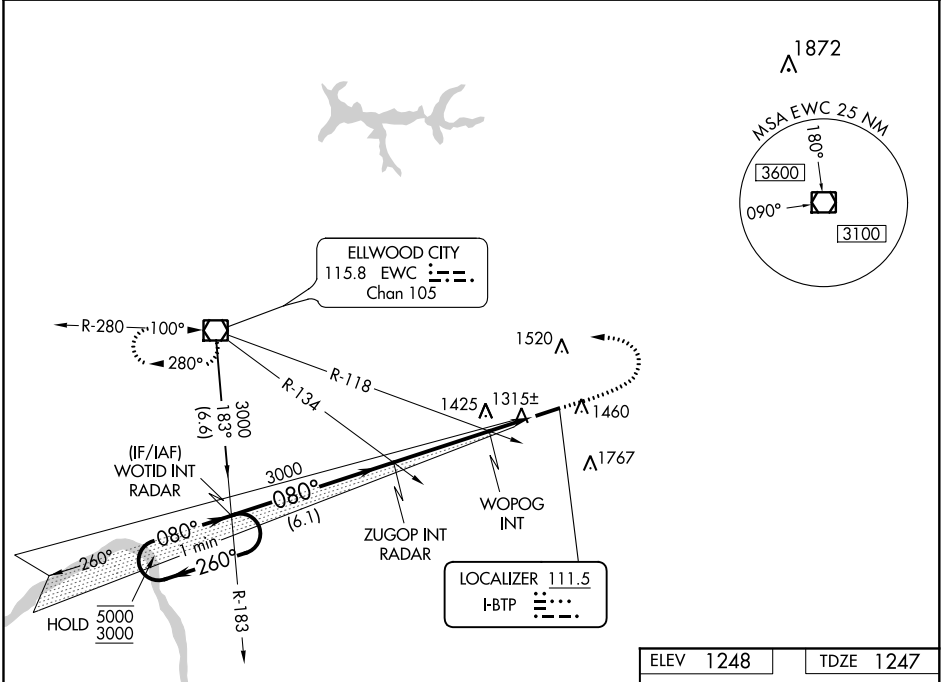


LOC I-BTP 111.5	APP CRS 080°	Rwy Idg 4801
		TDZE 1247
		Apt Elev 1248

ILS or LOC RWY 8

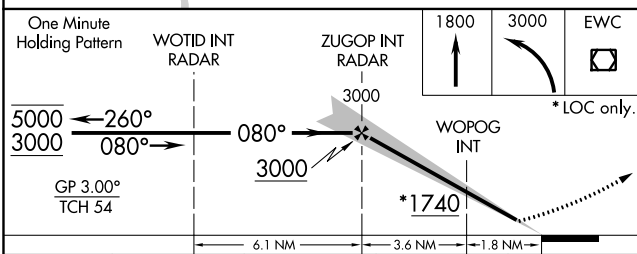
PITTSBURGH/BUTLER RGNL (BTP)

<p>▽ Rwy 8 helicopter visibility reduction below 3/4 SM NA.</p> <p>▲ Circling Rwy 26 NA at night. S-ILS 8 inop table does not apply.</p>	<p>MALSF</p>	<p>MISSED APPROACH: Climb to 1800 then climbing left turn to 3000 direct EWC VOR/DME and hold.</p>	
AWOS-3PT 121.450	PITTSBURGH APP CON 124.75 338.2	CLNC DEL 119.4	UNICOM 123.05 (CTAF) 0



NE-4, 16 JUN 2022 to 14 JUL 2022

NE-4, 16 JUN 2022 to 14 JUL 2022



ELEV 1248	TDZE 1247
<p>One Minute Holding Pattern</p> <p>WOTID INT RADAR</p> <p>ZUGOP INT RADAR</p> <p>WOPOG INT</p> <p>GP 3.00° TCH 54</p> <p>6.1 NM</p> <p>3.6 NM</p> <p>1.8 NM</p>	<p>1800</p> <p>3000</p> <p>EWC</p> <p>*LOC only.</p> <p>080° 5.4 NM from FAF</p> <p>REIL Rwy 26 0</p> <p>HIRL Rwy 8-26 0</p> <p>FAF to MAP 5.4 NM</p> <p>Knots: 60 90 120 150 180</p> <p>Min:Sec: 5:24 3:36 2:42 2:10 1:48</p>

CATEGORY	A	B	C	D
S-ILS 8		1497-3/4	250 (300-3/4)	
S-LOC 8	1740-3/4	493 (500-3/4)	1740-1 1/8	493 (500-1 1/8)
C CIRCLING	1820-1	572 (600-1)	2080-2 1/2	2080-2 3/4
			832 (900-2 1/2)	832 (900-2 3/4)
WOPOG FIX MINIMUMS (DUAL VOR RECEIVERS REQUIRED)				
S-LOC 8		1580-3/4	333 (400-3/4)	
C CIRCLING	1820-1	572 (600-1)	2080-2 1/2	2080-2 3/4
			832 (900-2 1/2)	832 (900-2 3/4)