

LOC/DME I-NQA <b>109.75</b> Chan 34 (Y)	APP CRS <b>219°</b>	Rwy Idg TDZE Apt Elev	<b>8000</b> <b>319</b> <b>319</b>
---	------------------------	-----------------------------	---

# ILS or LOC RWY 22

MILLINGTON/MEMPHIS (NQA)

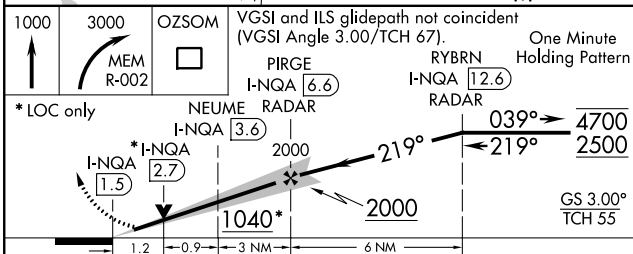
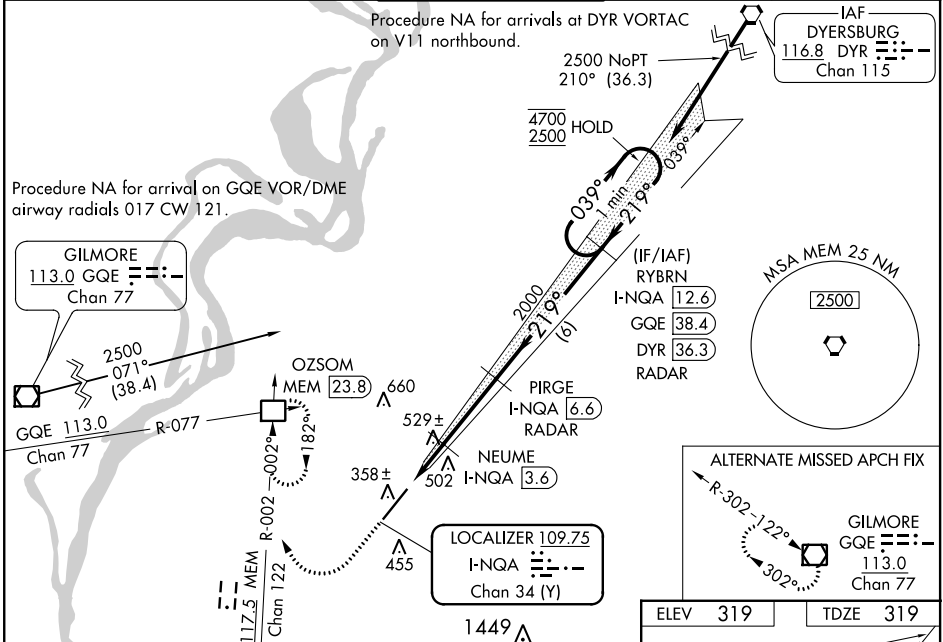
DME or RADAR required for procedure entry. DME or RADAR required for LOC only.

**⚠** S-ILS 22 procedure NA when control tower closed if ceiling/visibility lower than 800/2. Inop table does not apply to ILS. For inop ALS, increase LOC Cat A/B visibility to 1 SM, and Cat C/D/E visibility to 2 SM. Increase NEUME fix minimums Cat A/B visibility to 1 SM and Cat C/D/E to 1½ SM.

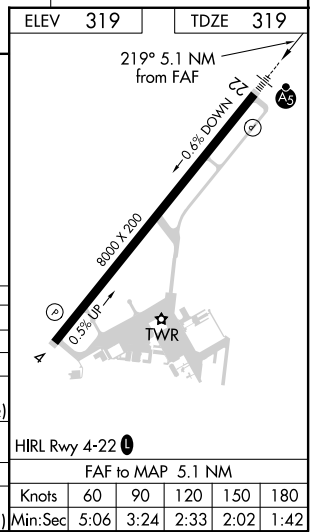
**MALSR**

MISSED APPROACH: Climb to 1000 then climbing right turn to 3000 on MEM VORTAC R-002 to OZSOM INT/MEM 23.8 DME and hold, continue climb-in-hold to 3000.

AWOS-3 <b>118.925</b>	MEMPHIS APP CON <b>119.1 291.6</b> (176°-355°) <b>125.8 338.3</b> (356°-175°)	MILLINGTON TOWER ★ <b>120.25 (CTAF) 0 340.2</b>	GND CON <b>121.375</b>	UNICOM <b>122.95</b>
--------------------------	---	--	---------------------------	-------------------------



CATEGORY	A	B	C	D	E
S-ILS 22	519-½ 200 (200-½)				
S-LOC 22	1040-¾	721 (800-¾)	1040-1⅝	721 (800-1⅝)	
<b>C</b> CIRCLING	1040-1	721 (800-1)	1040-2	1040-2¼	1040-2½
			721 (800-2)	721 (800-2¼)	721 (800-2½)
NEUME FIX MINIMUMS					
S-LOC 22	780-¾	461 (500-¾)	780-1	461 (500-1)	
<b>C</b> CIRCLING	800-1	820-1	920-1¾	960-2	960-2¼
	481 (500-1)	501 (600-1)	601 (700-1¾)	641 (700-2)	641 (700-2¼)



SE-1, 16 JUN 2022 to 14 JUL 2022

SE-1, 16 JUN 2022 to 14 JUL 2022