

WAAS CH 86212 W22A	APP CRS 219°	Rwy Idg TDZE 319 Apt Elev 319	8000 319 319
--	------------------------	---	---

RNAV (GPS) RWY 22

MILLINGTON/MEMPHIS (NQA)

RNP APCH.

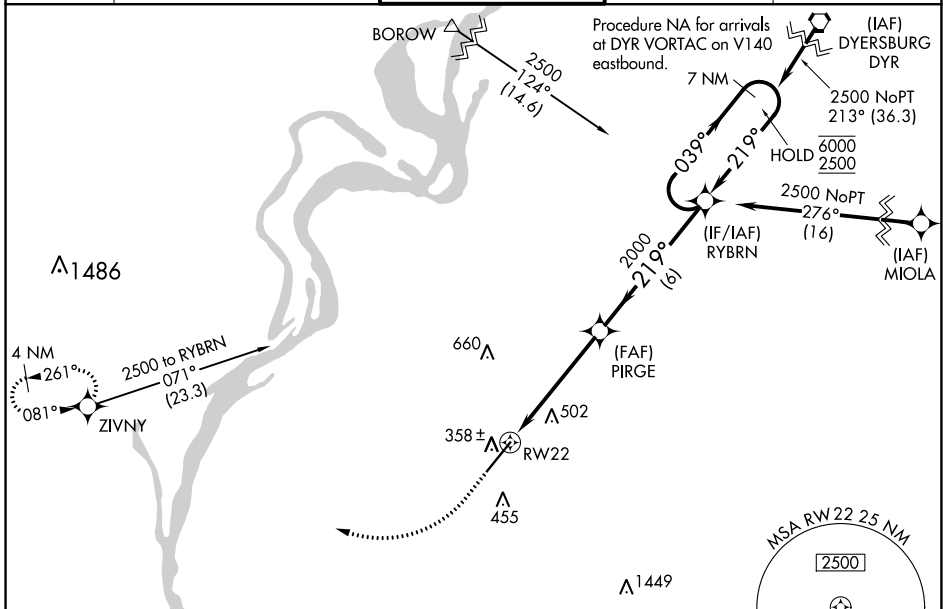
- ▼ For uncompensated Baro-VNAV systems, LNAV/VNAV NA below -15°C or above 54°C.
- ▲ For inop ALS, increase LNAV/VNAV all Cats visibility to 1 3/8 SM, and LNAV Cat A/B visibility to 1 SM and Cat E visibility to 1 1/2 SM. Inop table does not apply to LPV.

MALSR

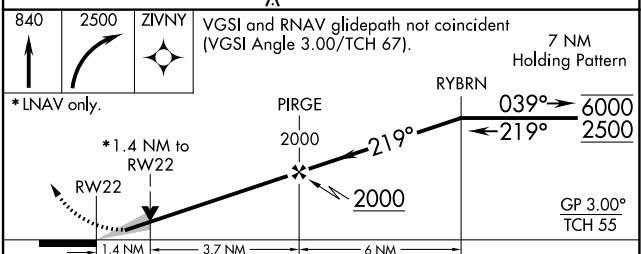
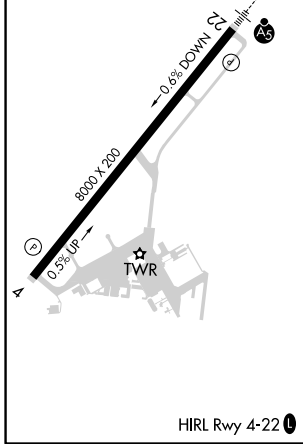


MISSED APPROACH:
Climb to 840 then
climbing right turn to
2500 direct ZIVNY
and hold.

AWOS-3 118.925	MEMPHIS APP CON 119.1 291.6 125.8 338.3	(176°-355°) (356°-175°)	MILLINGTON TOWER ★ 120.25 (CTAF) 0 340.2	GND CON 121.375	UNICOM 122.95
--------------------------	---	----------------------------	--	---------------------------	-------------------------



ELEV 319	TDZE 319
----------	----------



CATEGORY	A	B	C	D	E
LPV DA	519-1/2		200 (200-1/2)		
LNAV/VNAV DA	786-1		467 (500-1)		
LNAV MDA	840-3/4	521 (600-3/4)	840-1	521 (600-1)	
<input checked="" type="checkbox"/> CIRCLING	840-1	521 (600-1)	920-1 3/4 601 (700-1 3/4)	960-2 641 (700-2)	960-2 1/4 641 (700-2 1/4)

SE-1, 16 JUN 2022 to 14 JUL 2022

SE-1, 16 JUN 2022 to 14 JUL 2022