

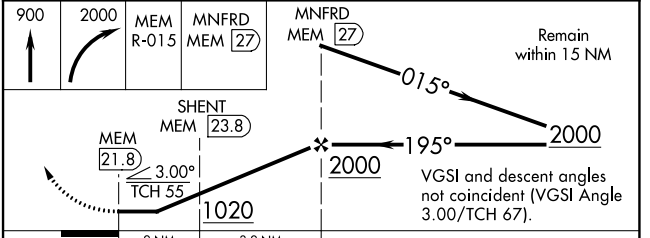
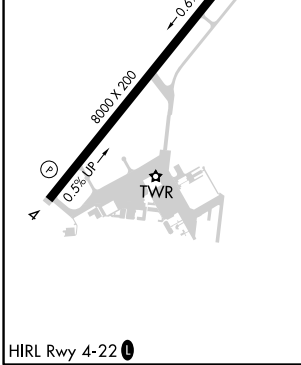
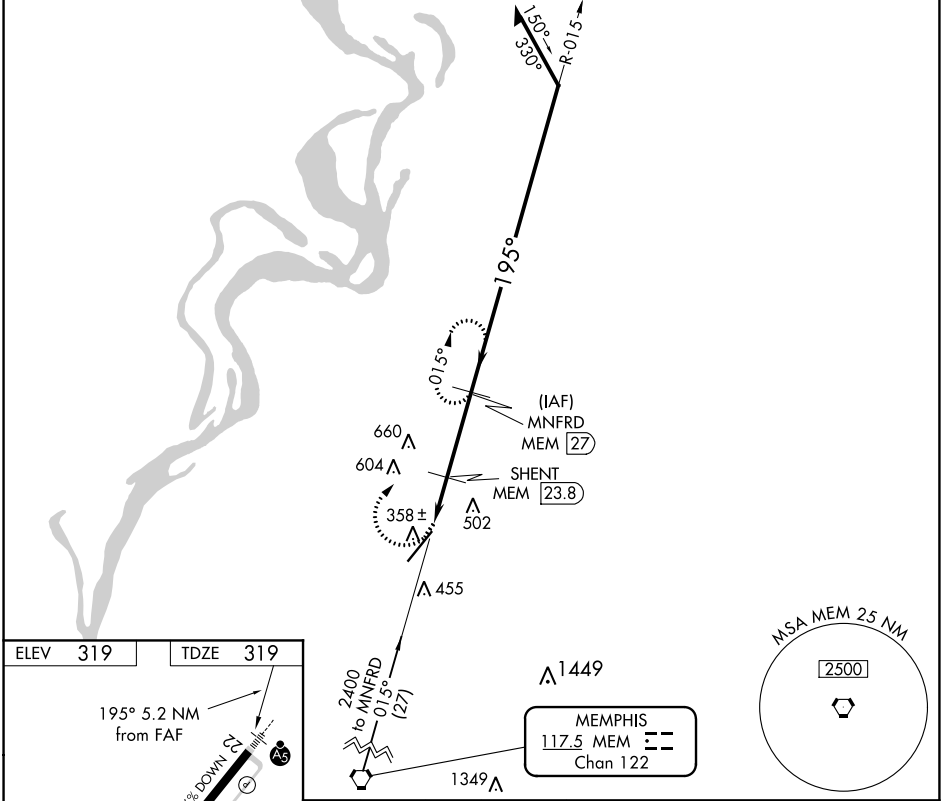
VORTAC MEM 117.5 Chan 122	APP CRS 195°	Rwy Idg TDZE Apt Elev	8000 319 319
---	------------------------	-----------------------------	---

VOR or TACAN RWY 22

MILLINGTON/MEMPHIS (NQA)

DME required.		MALSR	MISSED APPROACH: Climb to 900, then descending right turn to 2000 on MEM VORTAC R-015 to MNFRD/27 DME and hold, continue climb-in-hold to 2000.
<p>▼ Rwy 22 helicopter visibility reduction below 3/4 SM NA. ▲ Hop table does not apply.</p>			

AWOS-3 118.925	MEMPHIS APP CON 119.1 291.6 125.8 338.3 (176°-355°) (356°-175°)	MILLINGTON TOWER ★ 120.25 (CTAF) 0 340.2	GND CON 121.375	UNICOM 122.95
--------------------------	---	--	---------------------------	-------------------------



CATEGORY	A	B	C	D	E
S-22	880-1	561 (600-1)	880-1½	561 (600-1½)	
CIRCLING	880-1	561 (600-1)	920-1¾ 601 (700-1¾)	960-2 641 (700-2)	960-2¼ 641 (700-2¼)

SE-1, 16 JUN 2022 to 14 JUL 2022

SE-1, 16 JUN 2022 to 14 JUL 2022