

TACAN NTU Chan 113	APCH CRS 309°	Rwy ldg 32L 8000 32R 8001	TDZE 32L 22 32R 20	AL-934 [USN] OCEANA NAS (APOLLO SOUCEK FLD) (KNTU)
-----------------------	------------------	---------------------------------	--------------------------	---

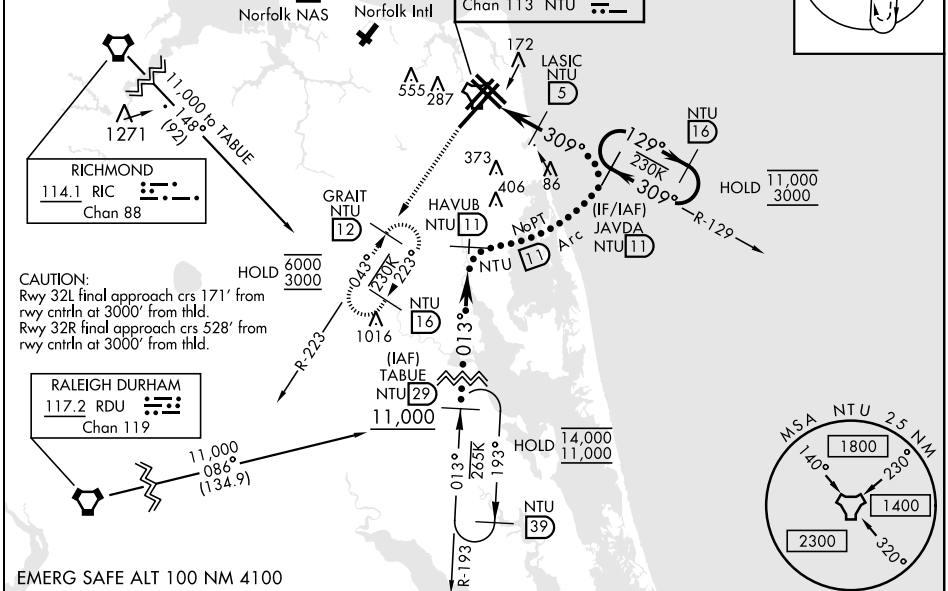
▼ * When ALS inop, increase CAT CDE vis to 1½ miles.
ALSF-1
MISSED APPROACH: Climbing left turn to 3000, intercept NTU TACAN R-223 to GRAIT and hold.

ATIS 317.6	OCEANA APP/DEP CON 123.9 266.8	TOWER 127.075 360.2	GND CON 119.6 336.4	CLNC DEL 254.4	ASR/ PAR
---------------	-----------------------------------	------------------------	------------------------	-------------------	-------------

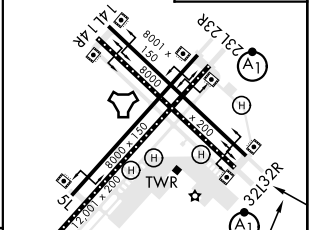
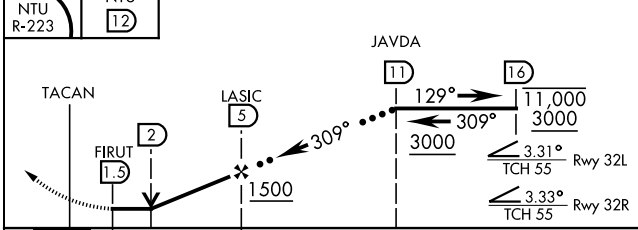
Knots	60	120	180	240	300	360
V/V(fpm)	220	440	660	880	1100	1320

Min climb of 220 ft/NM to 3000 - Controlling Obstacle Unk

RICHMOND feeder turn exceeds 120°. RADAR or turn in hold required



EMERG SAFE ALT 100 NM 4100	ELEV 22	TDZE 32L 22	TDZE 32R 20
----------------------------	---------	-------------	-------------



CATEGORY	C	D	E
S-32L *	440-¾	418 (500-¾)	
S-32R	440-1½	420 (500-1½)	
CIRCLING	600-1½ 578 (600-1½)	600-2 578 (600-2)	900-3 878 (900-3)

HIRL all Rwy
Wave-Off Lgt all Rwy

NE-3, 16 JUN 2022 to 14 JUL 2022

NE-3, 16 JUN 2022 to 14 JUL 2022