

# HI-TACAN Z RWY 5L

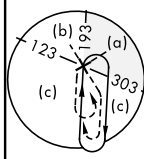
TACAN NTU Chan 113	APCH CRS 043°	Rwy Idg 8000
		TDZE 20
		Arprt Elev 22

AL-934 [USN]

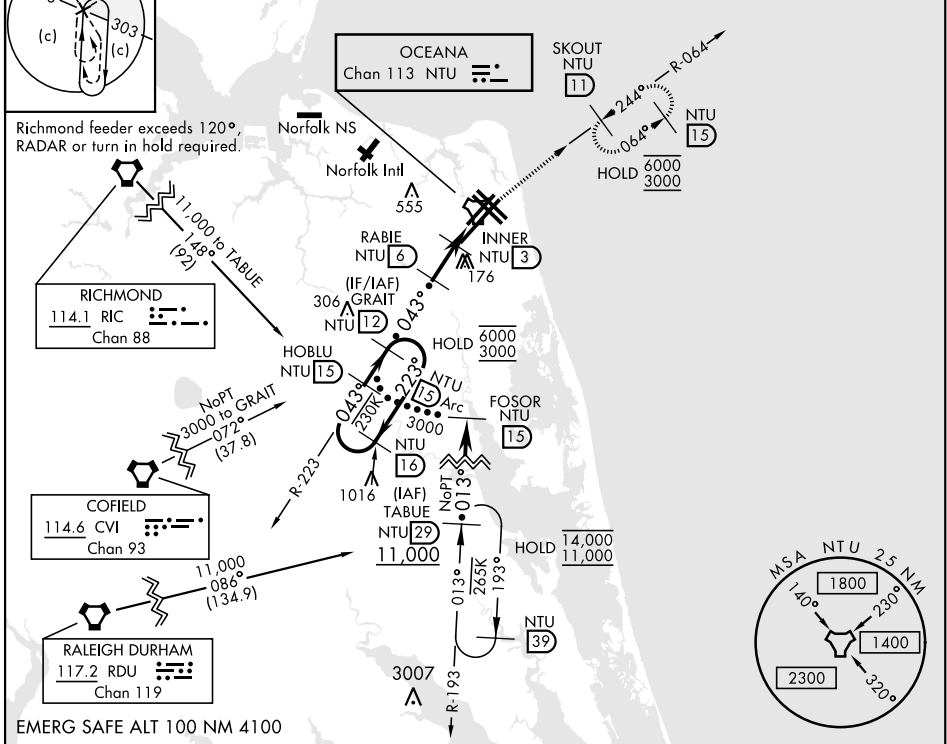
OCEANA NAS (APOLLO SOUCEK FLD) (KNTU)

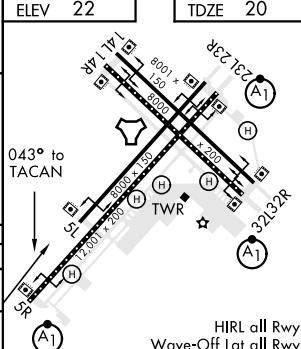
**MISSED APPROACH:** Climb to 3000 via R-223 to NTU TACAN and via R-064 to SKOUT and hold.

ATIS 317.6	OCEANA APP/DEP CON 123.9 266.8	TOWER 127.075 360.2	GND CON 119.6 336.4	CLNC DEL 254.4	ASR/ PAR
---------------	-----------------------------------	------------------------	------------------------	-------------------	-------------

CAUTION: Final approach crs 17° from rwy cntrl at 3000' from thld. 	Knots	60	120	180	240	300	360
	V/V(fpm)	210	420	630	840	1050	1260

Min climb of 210 ft/NM to 3000 - Controlling Obstacle Unk



HOBLU 15 GRAIT 12 RABIE 6 INNER 3 TACAN WEVKU 1.3	3000	NTU R-223	NTU	NTU R-064	ELEV 22	TDZE 20
	6000	3000	223°	043°	043°	3000
2.67° TCH 55 3000 1600 740 3 NM 1.7 0.7						
CATEGORY	C	D	E			
S-5L	420-1½		400	(400-1½)		
CIRCLING	600-1½ 578 (600-1½)	600-2 578 (600-2)	900-3 878 (900-3)			

# HI-TACAN Z RWY 5L

NE-3, 16 JUN 2022 to 14 JUL 2022

NE-3, 16 JUN 2022 to 14 JUL 2022

HIRL all Rwy  
Wave-Off Lgt all Rwy