

# HI-TACAN Z RWY 5R

TACAN NTU Chan <b>113</b>	APCH CRS <b>043°</b>	Rwy Idg TDZE Arprt Elev	<b>12,001</b> <b>19</b> <b>22</b>
------------------------------	-------------------------	-------------------------------	---

AL-934 [USN] OCEANA NAS (APOLLO SOUCEK FIELD) (KNTU)

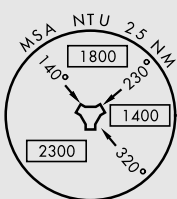
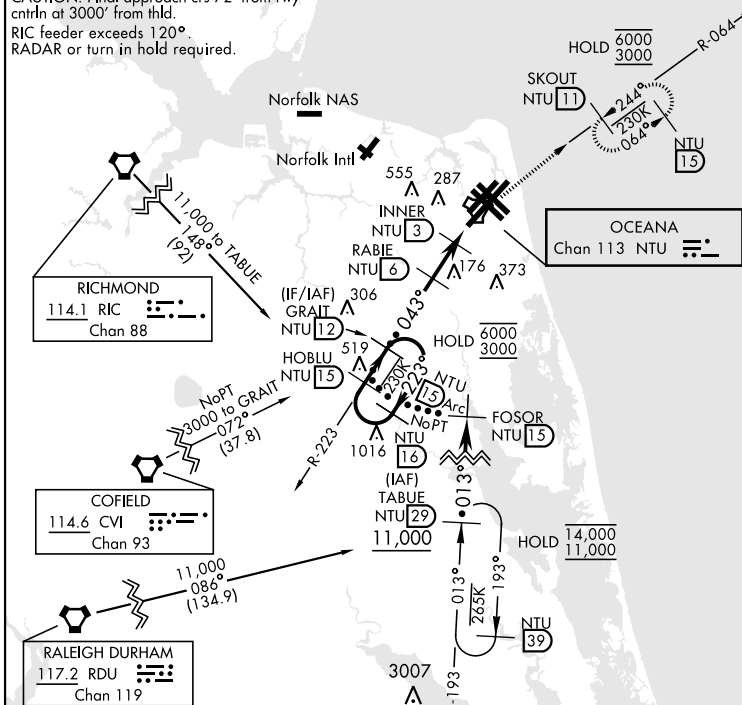
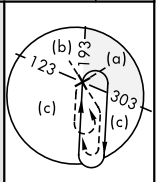
ALSF-1  
 \* When ALS inop, increase CAT CDE vis to 1½ miles.



MISSED APPROACH: Climb to 3000 via R-223 to NTU TACAN, and via R-064 to SKOUT and hold.

ATIS <b>317.6</b>	OCEANA APP/DEP CON <b>123.9 266.8</b>	TOWER <b>127.075 360.2</b>	GND CON <b>119.6 336.4</b>	CLNC DEL <b>254.4</b>	ASR/PAR
----------------------	--	-------------------------------	-------------------------------	--------------------------	---------

CAUTION: Final approach crs 72° from rwy cntrln at 3000' from thld.  
 RIC feeder exceeds 120°.  
 RADAR or turn in hold required.

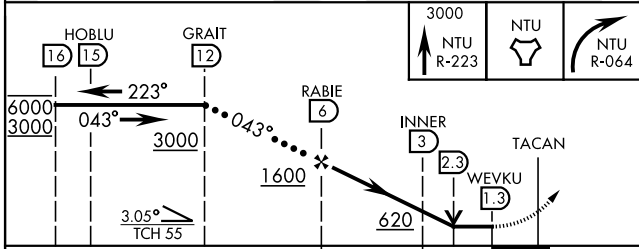


NE-3, 16 JUN 2022 to 14 JUL 2022

NE-3, 16 JUN 2022 to 14 JUL 2022

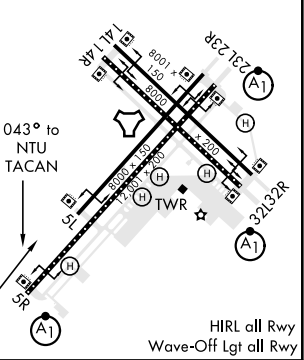
Knots	60	120	180	240	300	360
V/V(fpm)	210	420	630	840	1050	1260

Min climb of 210 ft/NM to 3000 - Controlling Obstacle Unk  
 EMERG SAFE ALT 100 NM 4100



ELEV 22	TDZE 19
---------	---------

CATEGORY	C	D	E
S-5R *	420-¾	401	(400-¾)
CIRCLING	600-1½ 578 (600-1½)	600-2 578 (600-2)	900-3 878 (900-3)



HIRL all Rwy  
 Wave-Off Lgt all Rwy

# HI-TACAN Z RWY 5R