

TACAN Y RWY 23L/R

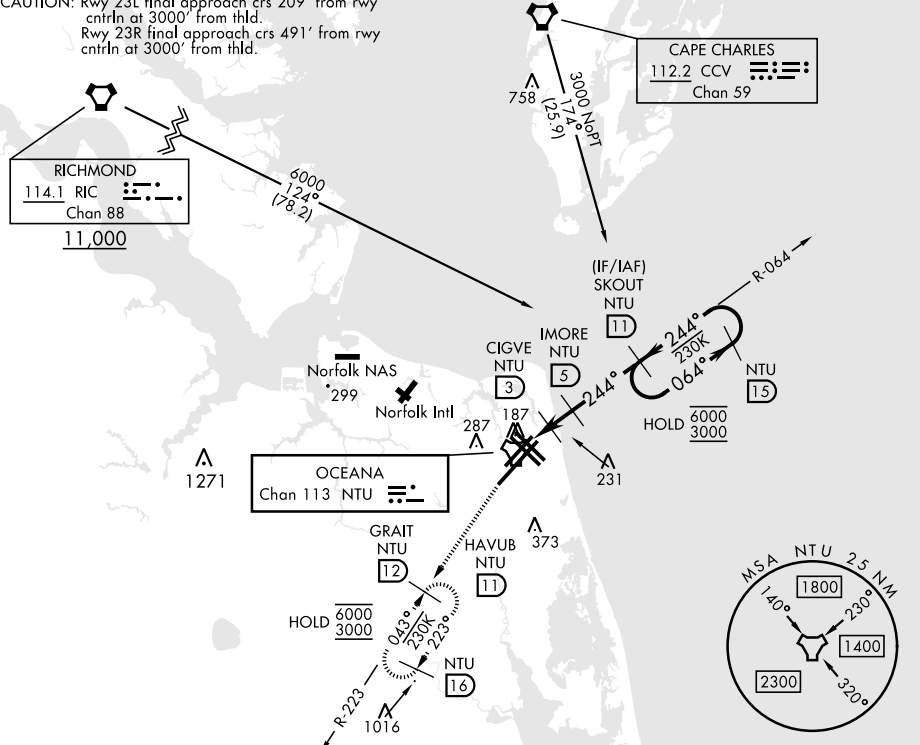
TACAN NTU Chan 113	APCH CRS 244°	Rwy ldg 23L 12,001 23R 8000 TDZE 23L 21 23R 20 Arpt Elev 22	AL-934 [USN] OCEANA NAS (APOLLO SOUCEK FLD) (KNTU)
------------------------------	-------------------------	--	---

⚠ * When ALS inop, increase CAT AB vis to 1 mile, CAT CD vis to 1½ miles.

 MISSED APPROACH: Climb to 3000 via R-064 to NTU TACAN and via R-223 to GRAIT and hold.

ATIS 317.6	OCEANA APP/DEP CON 123.9 266.8	TOWER 127.075 360.2	GND CON 119.6 336.4	CLNC DEL 254.4	ASR/ PAR
----------------------	--	-------------------------------	-------------------------------	--------------------------	-------------

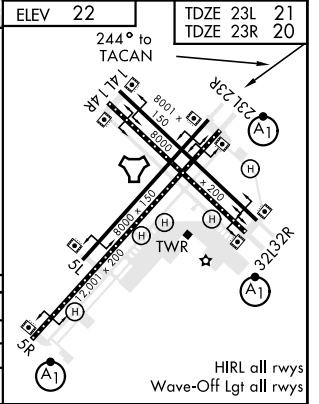
CAUTION: Rwy 23L final approach crs 209° from rwy ctrln at 3000' from thld.
 Rwy 23R final approach crs 491° from rwy ctrln at 3000' from thld.



EMERG SAFE ALT 100 NM 4100

3000	NTU	NTU R-064	NTU R-223
------	-----	-----------	-----------

TACAN, WENID (1.3), CIGVE (1.8), IMORE (5), SKOUT (11), GRAIT (12), HAVUB (11), IMORE (5), CIGVE (3), SKOUT (15).
 Altitudes: 840, 1600, 3000, 6000.
 Bearings: 244°, 064°.



CATEGORY	A	B	C	D
S-23L *	440-½	419 (500-½)	440-¾	419 (500-¾)
S-23R	440-1	420 (500-1)	440-1⅛	420 (500-1⅛)
CIRCLING	500-1	478 (500-1)	600-1½ 578 (600-1½)	600-2 578 (600-2)

TACAN Y RWY 23L/R

NE-3, 16 JUN 2022 to 14 JUL 2022

NE-3, 16 JUN 2022 to 14 JUL 2022