

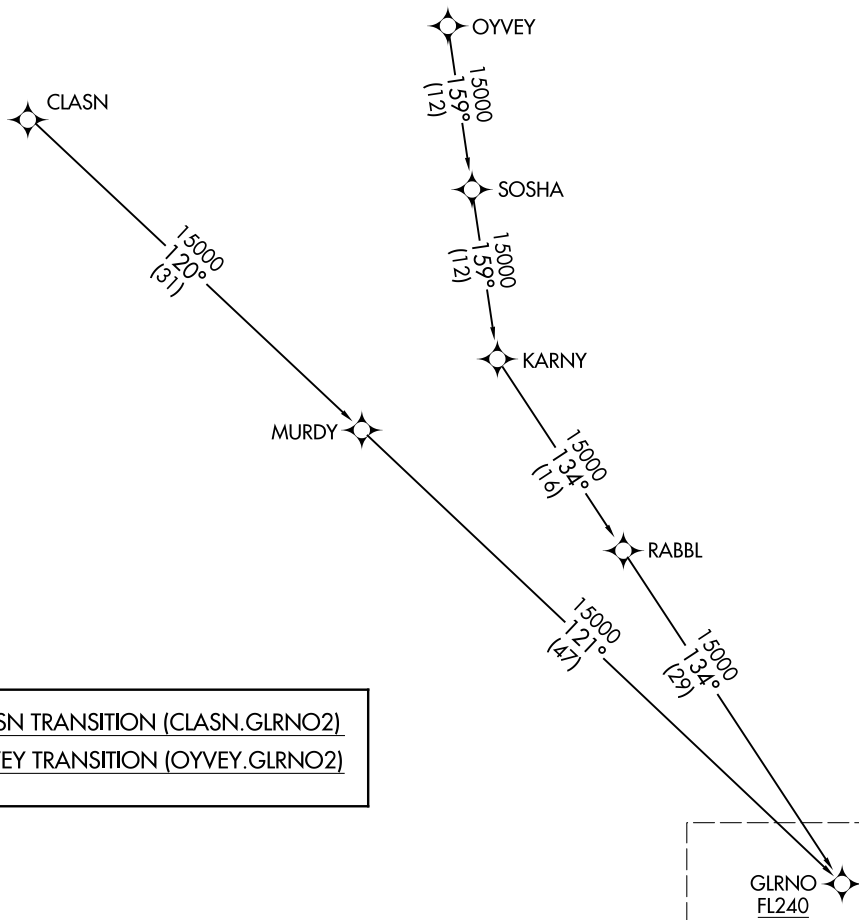
GLRNO TWO ARRIVAL (RNAV) Transition Routes

AL-965 (FAA)

ONTARIO INTL (ONT)
ONTARIO, CALIFORNIA

SOCAL APP CON
127.0 318.2
D-ATIS
124.25
ONTARIO TOWER
120.6 360.775

- NOTE: RADAR required.
- NOTE: RNAV 1.
- NOTE: DME/DME/IRU or GPS required.
- NOTE: Turbojet and turboprop aircraft only.
- NOTE: Expect Rwy 26L unless otherwise assigned by ATC.
- NOTE: Expect local area altimeter reaching FL200.



SW-3, 16 JUN 2022 to 14 JUL 2022

SW-3, 16 JUN 2022 to 14 JUL 2022

CLASN TRANSITION (CLASN.GLRNO2)
OYVEY TRANSITION (OYVEY.GLRNO2)

**GLRNO
FL240**

See following page
for arrival routes.

NOTE: Chart not to scale.

(CONTINUED ON FOLLOWING PAGE)

GLRNO TWO ARRIVAL (RNAV) Transition Routes