

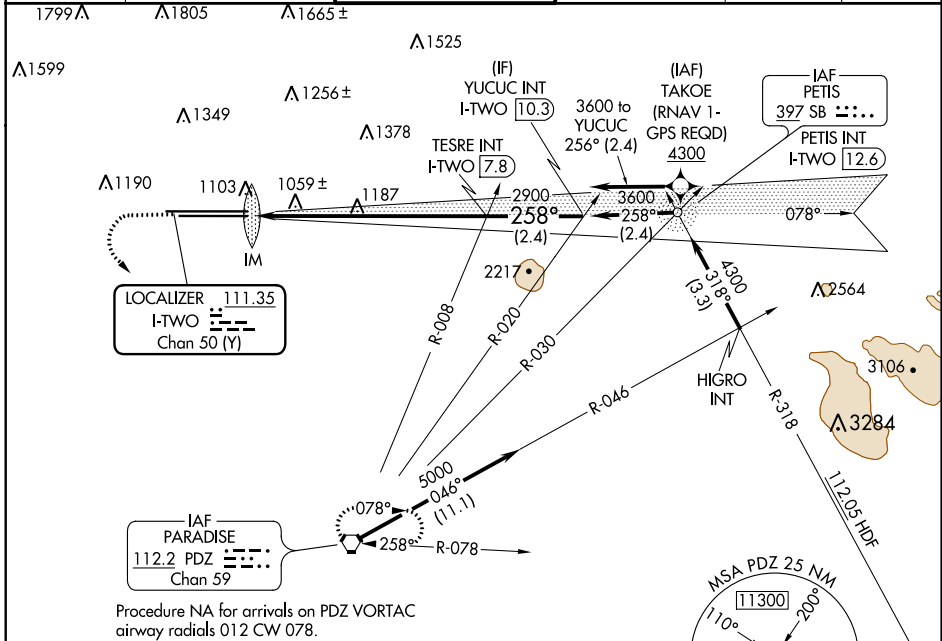
LOC/DME I-TWO <b>111.35</b> Chan <b>50(Y)</b>	APP CRS <b>258°</b>	Rwy Idg TDZE Apt Elev	<b>10200</b> <b>926</b> <b>944</b>
---	------------------------	-----------------------------	--

# ILS RWY 26L (CAT II & III)

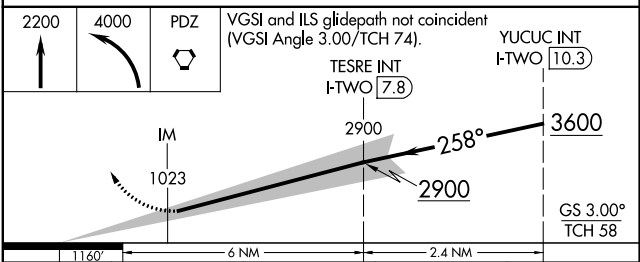
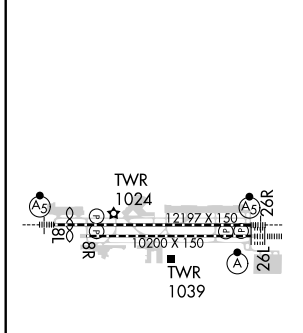
ONTARIO INTL (ONT)

	<b>MISSED APPROACH:</b> Climb to 2200 then climbing left turn to 4000 direct PDZ VORTAC and hold.				

D-ATIS <b>124.25</b>	SOCAL APP CON <b>127.0 318.2</b>	ONTARIO TOWER <b>120.6 360.775</b>	GND CON <b>121.9 257.8</b>	CLNC DEL <b>118.1</b>	CPDLC
-------------------------	-------------------------------------	---------------------------------------	-------------------------------	--------------------------	-------



ELEV 944	<b>D</b>	TDZE 926
----------	----------	----------



CATEGORY	A	B	C	D
S-ILS 26L	CAT II RA 103/12 100 DA 1026			
S-ILS 26L	CAT III RVR 06			

## CATEGORY II & III ILS - SPECIAL AIRCREW & AIRCRAFT CERTIFICATION REQUIRED

SW-3, 16 JUN 2022 to 14 JUL 2022

SW-3, 16 JUN 2022 to 14 JUL 2022