

LOC/DME I-ONT 109.7 Chan 34	APP CRS 258°	Rwy Idg TDZE Apt Elev	26R 12197 932 944	26L 10200 926 944
---	------------------------	-----------------------------	---	---

ILS or LOC RWY 26R

ONTARIO INTL (ONT)

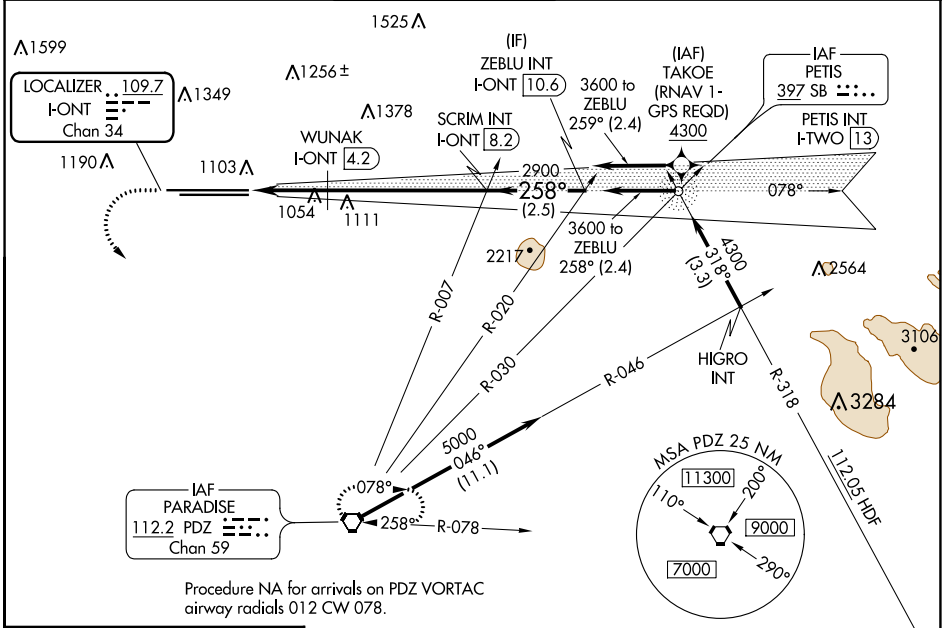
⚠ Circling NA north of Rwy 8L-26R. Inop table does not apply to Sidestep 26L Cat A. For inop ALS, increase Sidestep 26L Cat B visibility to 1½ SM and Sidestep 26L Cat C to 2½ SM. #RVR 1800 authorized with use of FD or AP or HUD to DA.

ALS Rwy 26R

ALS-2 Rwy 26L

MISSED APPROACH: Climb to 2200 then climbing left turn to 4000 direct PDZ VORTAC and hold.

D-ATIS 124.25	SOCAL APP CON 127.0 318.2	ONTARIO TOWER 120.6 360.775	GND CON 121.9 257.8	CLNC DEL 118.1	CPDLC
-------------------------	-------------------------------------	---------------------------------------	-------------------------------	--------------------------	-------



ELEV 944	D TDZE 26R 932 TDZE 26L 926	2200	4000	PDZ	VGSI and ILS glidepath not coincident (VGSI Angle 3.00/TCH 75).	ZEBLU INT I-ONT 10.6
		* LOC only		WUNAK I-ONT 4.2	SCRIM INT I-ONT 8.2	2900
		* I-ONT 3.3		I-ONT 2.2	2900	3600
		1.2 NM		0.9	4 NM	2.5 NM
		A		B	C	D
		S-ILS 26R#		1132/24 200 (200-½)		
		S-LOC 26R		1620/24	688 (700-½)	1620-1½ 688 (700-1½)
		SIDESTEP 26L		1720/55	794 (800-1)	1720-1¾ 794 (800-1¾) 1720-2 794 (800-2)
		WUNAK FIX MINIMUMS (DME REQUIRED)				
		S-LOC 26R		1360/24	428 (500-½)	1360/40 428 (500-¾)
		C CIRCLING		1620-1	676 (700-1)	1620-2 676 (700-2) 1620-2¼ 676 (700-2¼)

SW-3, 16 JUN 2022 to 14 JUL 2022

SW-3, 16 JUN 2022 to 14 JUL 2022