

RAJEE THREE DEPARTURE (RNAV)

AL-965 (FAA)

ONTARIO INTL (ONT)
ONTARIO, CALIFORNIA

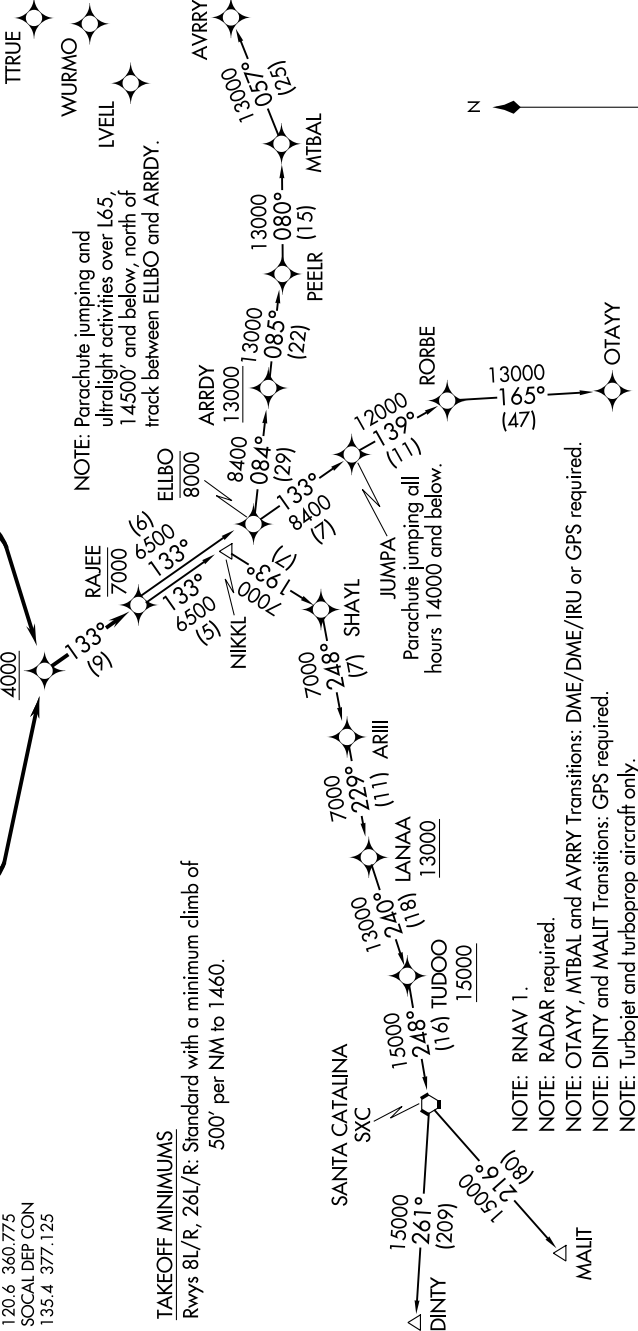
SW-3, 16 JUN 2022 to 14 JUL 2022

D-ATIS 124.25
 CLNC DEL 118.1
 CPDLC GND CON 121.9 257.8
 ONTARIO TOWER 120.6 360.775
 SOCIAL DEP CON 135.4 377.125

TAKEOFF MINIMUMS
 Rwy 8L/R, 26L/R: Standard with a minimum climb of 500' per NM to 1460.

**TOP ALTITUDE
 DINTY AND MALIT TRANSITIONS:
 15000**

**ALL OTHER TRANSITIONS:
 ASSIGNED BY ATC**



NOTE: Parachute jumping and ultralight activities over L65, 14500' and below, north of track between ELLBO and ARRDY.

- NOTE: RNAV 1.
- NOTE: RADAR required.
- NOTE: OTAYY, MTBAL and AVRRY Transitions: DME/DME/IRU or GPS required.
- NOTE: DINTY and MALIT Transitions: GPS required.
- NOTE: Turbojet and turboprop aircraft only.
- NOTE: MALIT and DINTY Transitions available between 2200 and 0600 local only.
- NOTE: DINTY Transition ATC assigned only.
- NOTE: For non-GPS equipped aircraft on the AVRRY Transition, JULIAN VORTAC (JUL) must be operational.

NOTE: Chart not to scale.

(NARRATIVE ON FOLLOWING PAGE)

SW-3, 16 JUN 2022 to 14 JUL 2022

RAJEE THREE DEPARTURE (RNAV)

ONTARIO, CALIFORNIA
ONTARIO INTL (ONT)