

WAAS CH 70329 W08A	APP CRS 078°	Rwy Idg 10200 TDZE 936 Apt Elev 944
----------------------------------------	------------------------	----------------------------------------------------------------

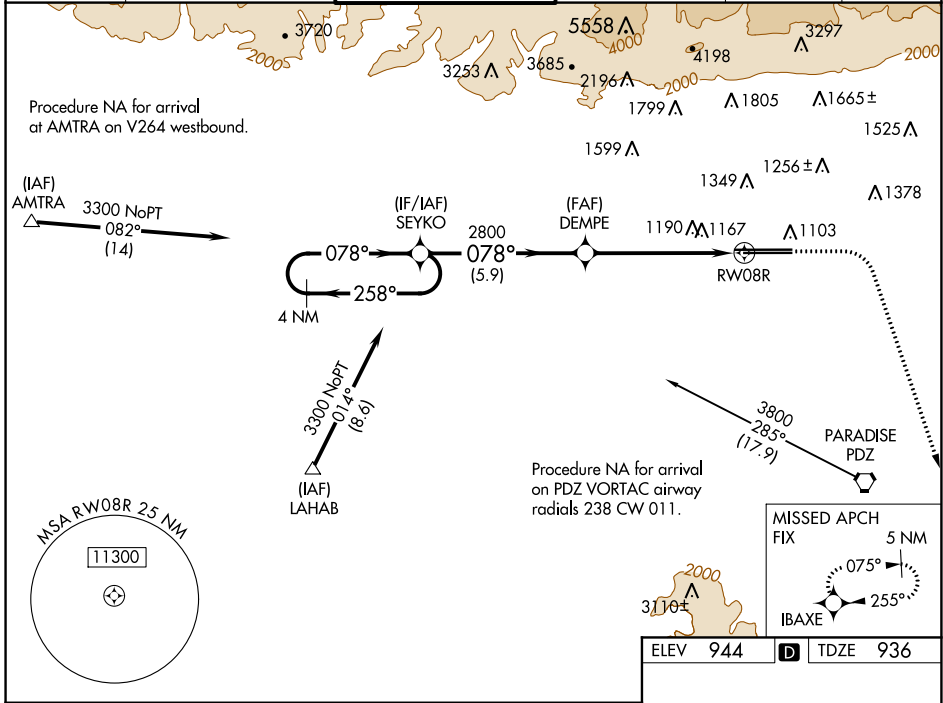
RNAV (GPS) Y RWY 8R

ONTARIO INTL (ONT)

▼ For uncompensated Baro-VNAV systems, procedure NA below 2° C (36°F) or above 54°C (130°F). Circling NA north of Rwy 8L-26R. DME/DME RNP-0.3 NA.

MISSED APPROACH: Climb to 1500 then climbing right turn to 5000 direct IBAXE and hold, continue climb-in-hold to 5000.

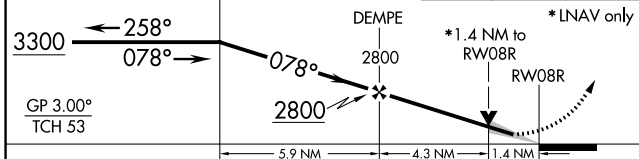
D-ATIS 124.25	SOCAL APP CON 127.0 318.2	ONTARIO TOWER 120.6 360.775	GND CON 121.9 257.8	CLNC DEL 118.1	CPDLC
-------------------------	-------------------------------------	---------------------------------------	-------------------------------	--------------------------	-------



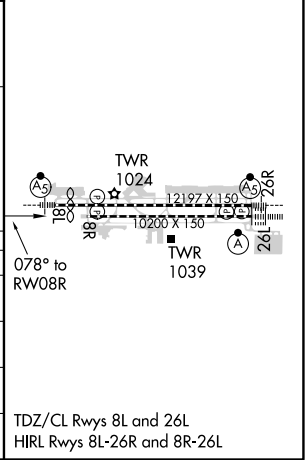
VGSI and RNAV glidepath not coincident (VGSI Angle 3.00/TCH 65)

4 NM Holding Pattern SEYKO

IBAXE



CATEGORY	A	B	C	D
LPV DA	1220/45		284 (300-7%)	
LNAV/VNAV DA	1494-1 7/8		558 (600-17%)	
LNAV MDA	1440/55 504 (500-1)		1440-1 3/8 504 (500-13%)	
CIRCLING	1440-1 496 (500-1)		1540-1 1/2 596 (600-1 1/2) 1600-2 656 (700-2)	



SW-3, 16 JUN 2022 to 14 JUL 2022

SW-3, 16 JUN 2022 to 14 JUL 2022