

APP CRS 239°	Rwy Idg 6006
	TDZE 193
	Apt Elev 212

RNAV (RNP) Y RWY 24

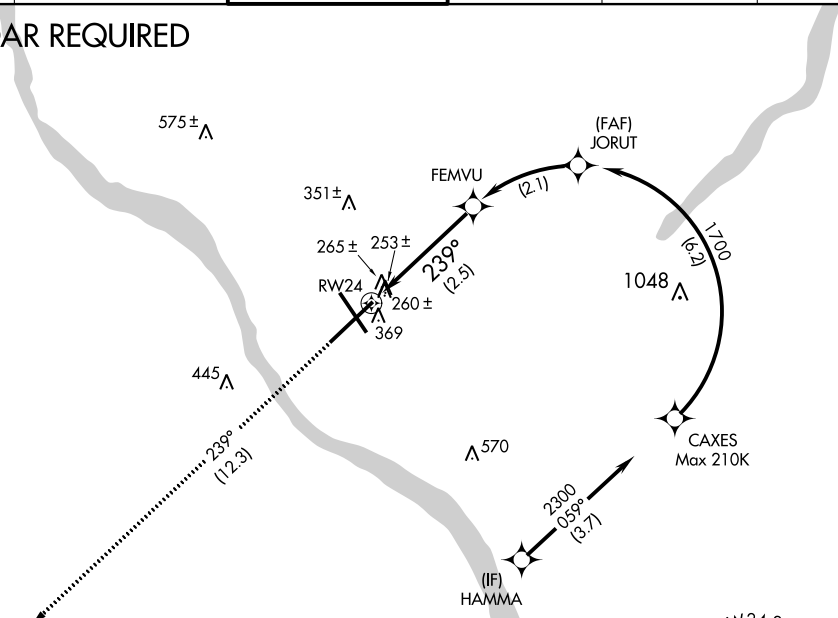
TRENTON MERCER (TTN)

▼ For uncompensated Baro-VNAV systems, procedure NA below -13°C (8°F) or above 54°C (130°F).
When VGSI inop, procedure NA at night.
RF required.
GPS required.

MISSED APPROACH: Climb to 2700 on track 239° to ZUBAX and hold.

ATIS 126.775	PHILADELPHIA APP CON 123.8 291.7	TRENTON TOWER ★ 120.7 (CTAF) 257.8	GND CON 121.9 257.8	CLNC DEL 121.9 257.8	UNICOM 122.95
------------------------	--	--	-------------------------------	--------------------------------	-------------------------

RADAR REQUIRED



NE-2, 16 JUN 2022 to 14 JUL 2022

NE-2, 16 JUN 2022 to 14 JUL 2022

ELEV 212 TDZE 193

HIRL Rwy 6-24 and 16-34
REIL Rwy 16, 24 and 34

MISSED APCH FIX

ZUBAX

4 NM

MSA RW 24 25 NM

2600

2700 tr 239° ZUBAX

VGSI and RNAV glidepath not coincident (VGSI Angle 3.00/TCH 42).

FEMVU 1043 JORUT 1700 CAXES 2300 HAMMA 2600

RWY 24 239°

2.5 NM 2.1 NM 6.2 NM 3.7 NM

GP 3.00° TCH 55

CATEGORY	A	B	C	D
RNP 0.10 DA		641-1½	448 (500-1½)	
RNP 0.30 DA		741-1½	548 (600-1½)	

AUTHORIZATION REQUIRED