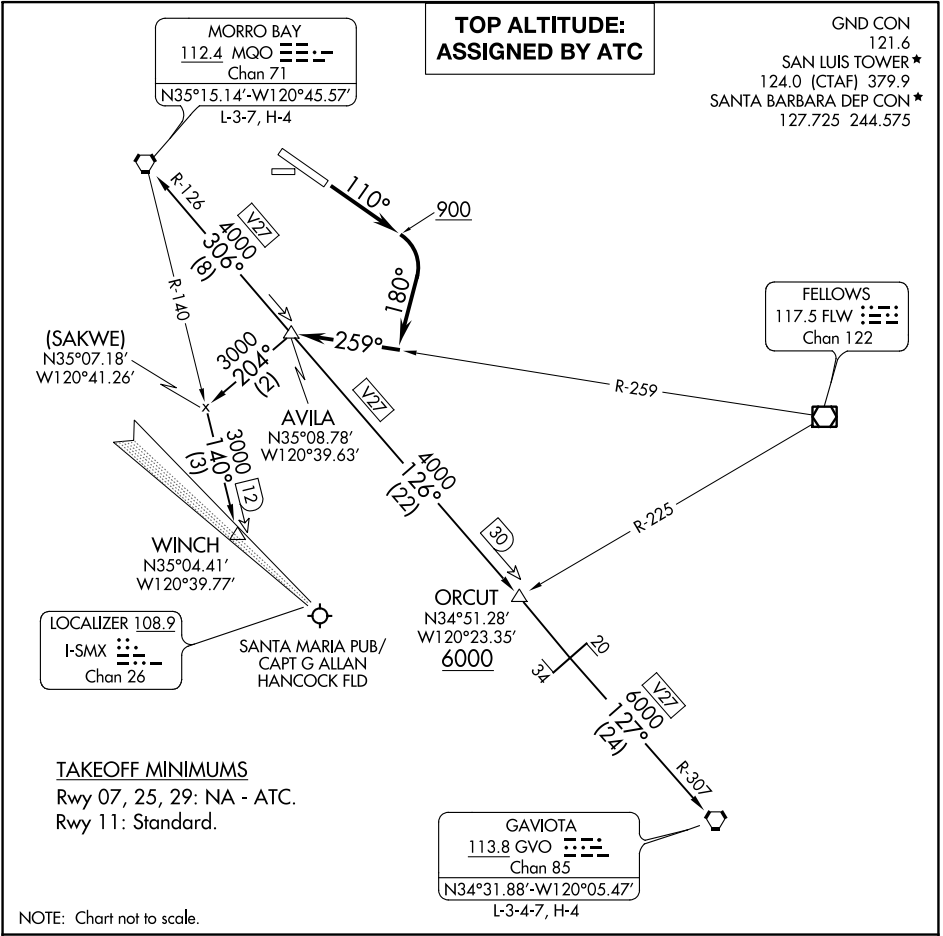


AVILA FOUR DEPARTURE

AL-989 (FAA)

SAN LUIS COUNTY RGNL (SBP)
SAN LUIS OBISPO, CALIFORNIA



SW-3, 16 JUN 2022 to 14 JUL 2022

SW-3, 16 JUN 2022 to 14 JUL 2022

TAKEOFF MINIMUMS

Rwy 07, 25, 29: NA - ATC.
Rwy 11: Standard.

NOTE: Chart not to scale.



DEPARTURE ROUTE DESCRIPTION

TAKEOFF RUNWAY 11: Climb on heading 110° to 900, then climbing right turn heading 180° to intercept the FLW VOR/DME R-259 to AVILA INT, then on assigned transition or assigned route. Maintain ATC assigned altitude.

GAVIOTA TRANSITION (AVILA4.GVO): From over AVILA on MQO R-126 to ORCUT, then on MQO R-126 and GVO R-307 to GVO VORTAC.

MORRO BAY TRANSITION (AVILA4.MQO): From over AVILA on MQO R-126 to MQO VORTAC.

WINCH TRANSITION (AVILA4.WINCH): From over AVILA on heading 204° to SAKWE, then on MQO R-140 to WINCH.