

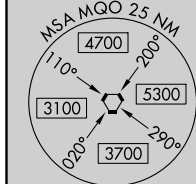
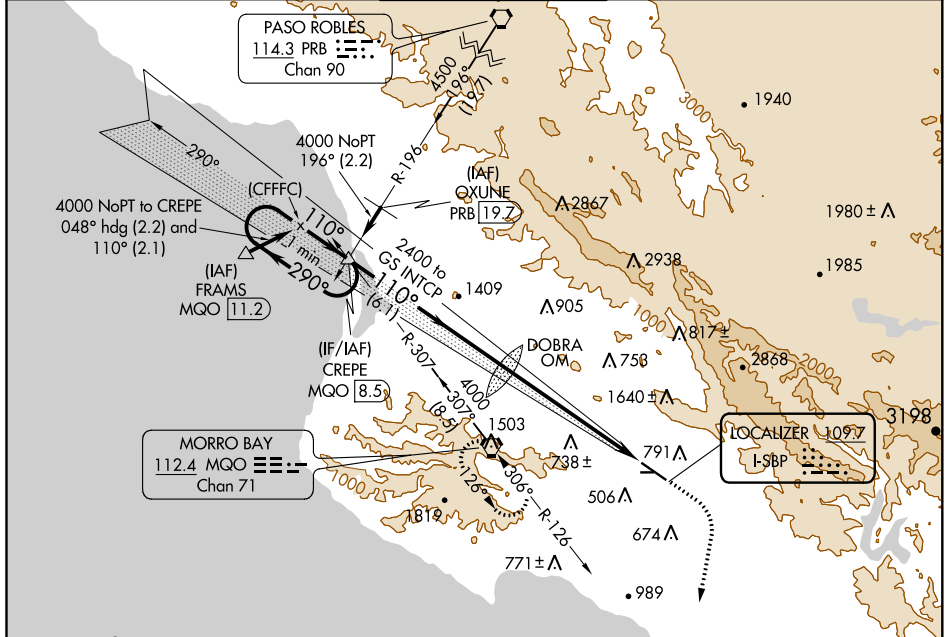
LOC I-SBP 109.7	APP CRS 110°	Rwy Idg 5300
		TDZE 198
		Apt Elev 212

ILS RWY 11

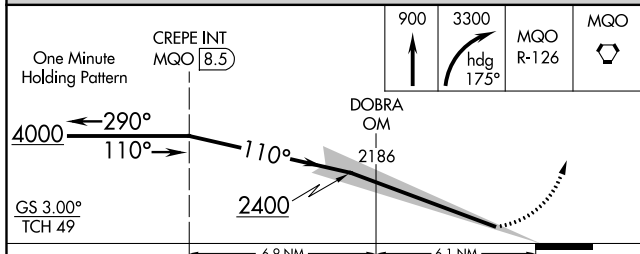
SAN LUIS COUNTY RGNL (SBP)

	MALS	MISSED APPROACH: Climb to 900 then climbing right turn to 3300 on heading 175° and on MQO VORTAC R-126 to MQO VORTAC and hold, continue climb-in-hold to 3300.

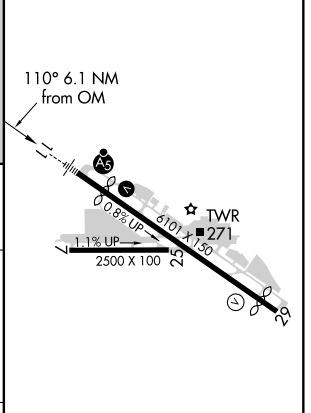
ATIS 120.6	SANTA BARBARA APP CON* 127.725 244.575	SAN LUIS TOWER* 124.0 (CTAF) 379.9	GND CON 121.6	UNICOM 122.95
----------------------	--	--	-------------------------	-------------------------



When GS not used, use LOC RWY 11 procedure.



ELEV 212	TDZE 198
----------	----------



CATEGORY	A	B	C	D
S-ILS 11		398-1/2	200 (200-1/2)	

REIL Rwy 29
HIRL Rwy 11-29

SW-3, 16 JUN 2022 to 14 JUL 2022

SW-3, 16 JUN 2022 to 14 JUL 2022