

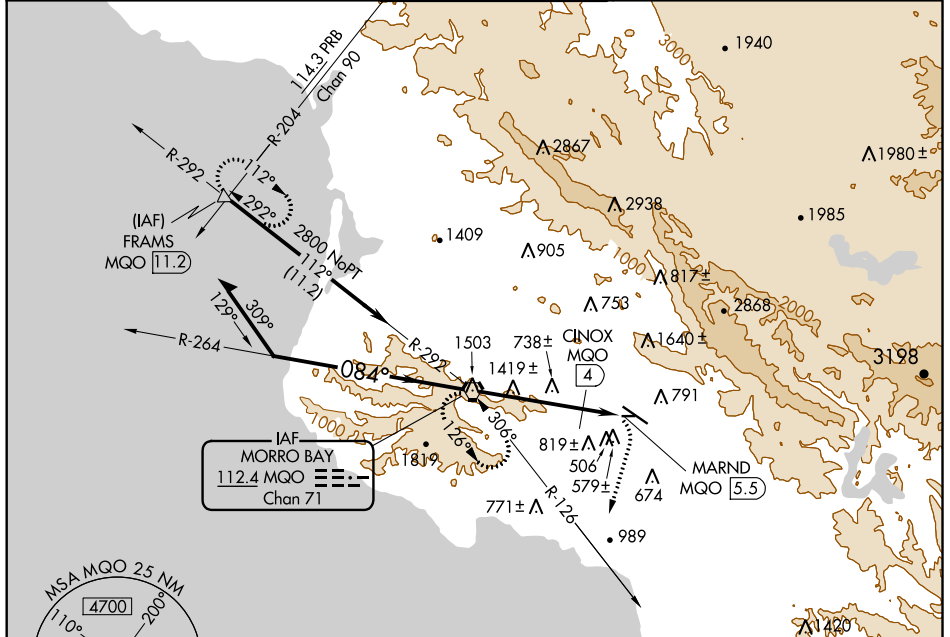
VORTAC MQO 112.4 Chan 71	APP CRS 084°	Rwy Idg TDZE Apt Elev	N/A N/A 212
---------------------------------------	------------------------	-----------------------------	--

VOR or TACAN-A

SAN LUIS COUNTY RGNL (SBP)

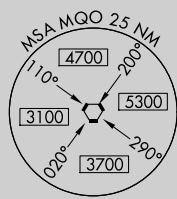
MISSED APPROACH: Climbing right turn to 3100 via heading 175° and MQO R-126 to MQO VORTAC and hold. (TACAN Aircraft continue climb to 4000 via MQO R-292 to FRAMS 11.2 DME and hold east, right turns, 292° inbound.)

ATIS 120.6	SANTA BARBARA APP CON* 127.725 244.575	SAN LUIS TOWER* 124.0 (CTAF) 379.9	GND CON 121.6	UNICOM 122.95
----------------------	--	--	-------------------------	-------------------------

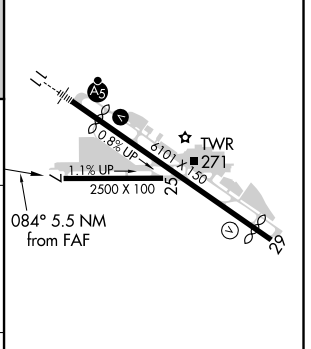
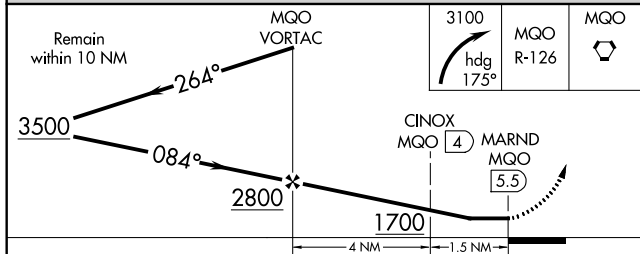


SW-3, 16 JUN 2022 to 14 JUL 2022

SW-3, 16 JUN 2022 to 14 JUL 2022



ELEV 212	D
----------	----------



CATEGORY	A	B	C	D
CIRCLING	1700-1¼ 1488 (1500-1¼)	1700-1½ 1488 (1500-1½)	1700-3	1488 (1500-3)
TACAN OR DME MINIMA				
CIRCLING	1120-1¼ 908 (1000-1¼)	1220-1½ 1008 (1100-1½)	1460-3 1248 (1300-3)	1560-3 1348 (1400-3)

HIRL Rwy 11-29 L	FAF to MAP 5.5 NM					
REIL Rwy 29 L						
	Knots	60	90	120	150	180
	Min:Sec	5:30	3:40	2:45	2:12	1:50