

RNAV (GPS) RWY 11

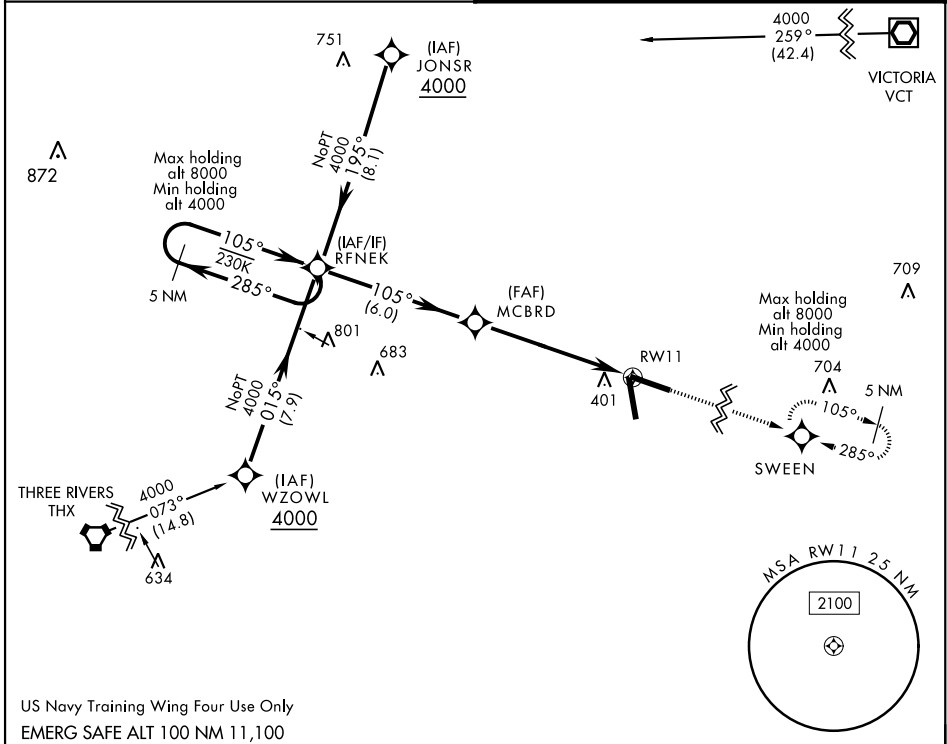
APCH CRS	Rwy Idg	8000
105°	TDZE	318
	Arpt Elev	322

AL-2440 [USN]

GOLIAD NOLF (KNGT)

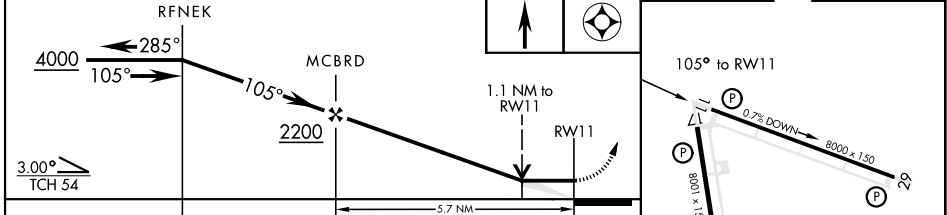
RNP APCH - DME/DME RNP-0.3 NA. MISSED APPROACH: Climb to 4000 direct SWEEN and hold, continue climb-in-hold to 4000.

ASOS **353.675** CTAF **132.875 307.075**

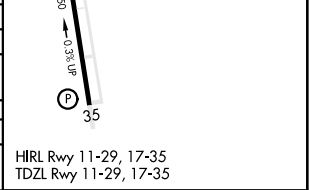


US Navy Training Wing Four Use Only
EMERG SAFE ALT 100 NM 11,100

VDP NA with Beeville Muni altimeter setting. ELEV 322 TDZE 318



CATEGORY	A	B	C	D
LNAV MDA	720-1 402	(400-1)	720-1½ 402	(400-1½)
C CIRCLING	760-1 438 (500-1)	780-1 458 (500-1)	780-1½ 458 (500-1½)	880-2 558 (600-2)
BEEVILLE MUNI ALTIMETER SETTING MINIMA				
LNAV MDA	760-1 442 (500-1)	760-1¾ 442 (500-1¾)	800-1½ 478 (500-1½)	880-2 558 (600-2)
C CIRCLING	800-1 478 (500-1)			



RNAV (GPS) RWY 11

SC-3, 16 JUN 2022 to 14 JUL 2022

SC-3, 16 JUN 2022 to 14 JUL 2022