

RNAV (GPS) RWY 17

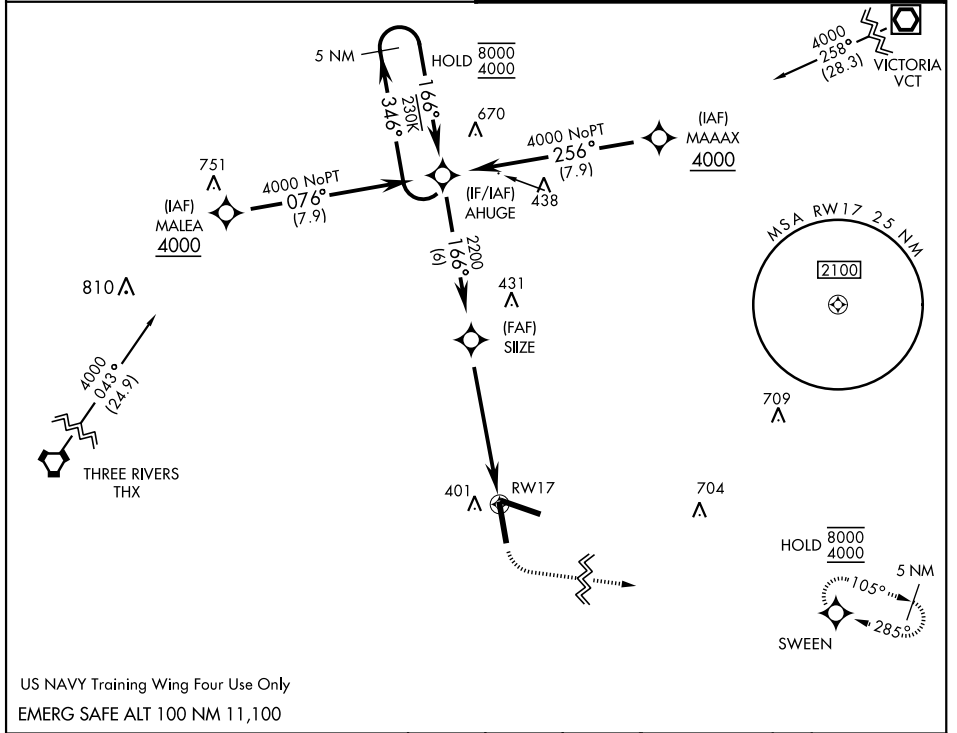
APCH CRS	Rwy Idg	8001
166°	TDZE	322
	Arpt Elev	322

AL-2440 [USN]

GOLIAD NOLF (KNGT)

RNP APCH - DME/DME RNP-0.3 NA.	MISSED APPROACH: Climb to 900 then climbing left turn to 4000 direct SWEENEY and hold, continue climb-in-hold to 4000.
--------------------------------	--

ASOS 353.675	CTAF 132.875 307.075
------------------------	--------------------------------



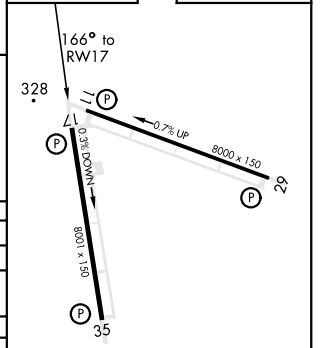
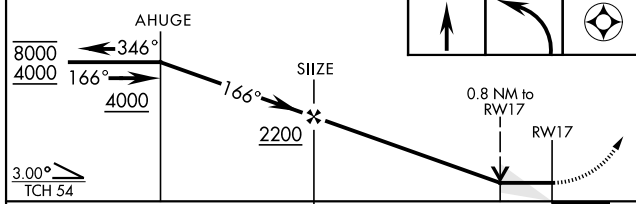
SC-3, 16 JUN 2022 to 14 JUL 2022

SC-3, 16 JUN 2022 to 14 JUL 2022

US NAVY Training Wing Four Use Only

EMERG SAFE ALT 100 NM 11,100

VDP NA with Beeville Muni altimeter setting.	900	4000	SWEENEY	ELEV 322	TDZE 322
--	-----	------	---------	----------	----------



CATEGORY	A	B	C	D
LNAV MDA		640-1	318	(400-1)
CIRCLING	760-1 438 (500-1)	780-1 458 (500-1)	780-1½ 458 (500-1½)	880-2 558 (600-2)
BEEVILLE MUNI ALTIMETER SETTING MINIMA				
LNAV MDA		680-1	358	(400-1)
CIRCLING	800-1	478	(500-1)	800-1½ 478 (500-1½)
				880-2 558 (600-2)

HIRL Rwy 11-29, 17-35
TDZL Rwy 11-29, 17-35

RNAV (GPS) RWY 17