

RNAV (GPS) RWY 29

APCH CRS **285°**
 Rwy Idg **8000**
 TDZE **285**
 Arpt Elev **322**

AL-2440 [USN]

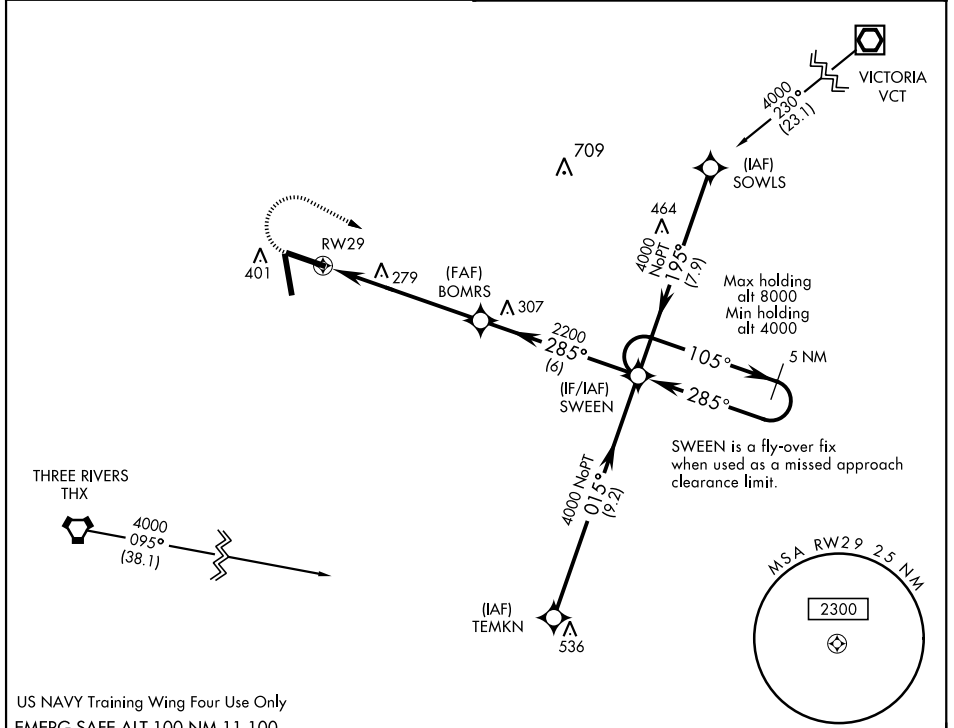
GOLIAD NOLF (KNGT)

RNP APCH - DME/DME RNP-0.3 NA.

MISSED APPROACH: Climb to 900 then climbing right turn to 4000 direct SWEEN and hold, continue climb-in-hold to 4000.

ASOS
353.675

CTAF
132.875 307.075



US NAVY Training Wing Four Use Only
 EMERG SAFE ALT 100 NM 11,100

		VDP NA with Beeville Muni altimeter setting.	ELEV 322	TDZE 285
		SWEEN BOMRS 2200 285° / 105° / 285° 4000 3.00° TCH 53		
CATEGORY	A	B	C	D
LNAV MDA	580-1 295 (300-1)			
CIRCLING	760-1 438 (500-1)	780-1 458 (500-1)	780-1½ 458 (500-1½)	880-2 558 (600-2)
BEEVILLE MUNI ALTIMETER SETTING MINIMA				
LNAV MDA	640-1 355 (400-1)			
CIRCLING	800-1 478 (500-1)	800-1½ 478 (500-1½)		880-2 558 (600-2)
HIRL Rwy 11-29, 17-35 TDZL Rwy 11-29, 17-35				

RNAV (GPS) RWY 29

SC-3, 16 JUN 2022 to 14 JUL 2022

SC-3, 16 JUN 2022 to 14 JUL 2022