

RNAV (GPS) RWY 35

APCH CRS	Rwy ldg	8001
346°	TDZE	307
	Arpt Elev	322

AL-2440 [USN]

GOLIAD NOLF (KNGT)

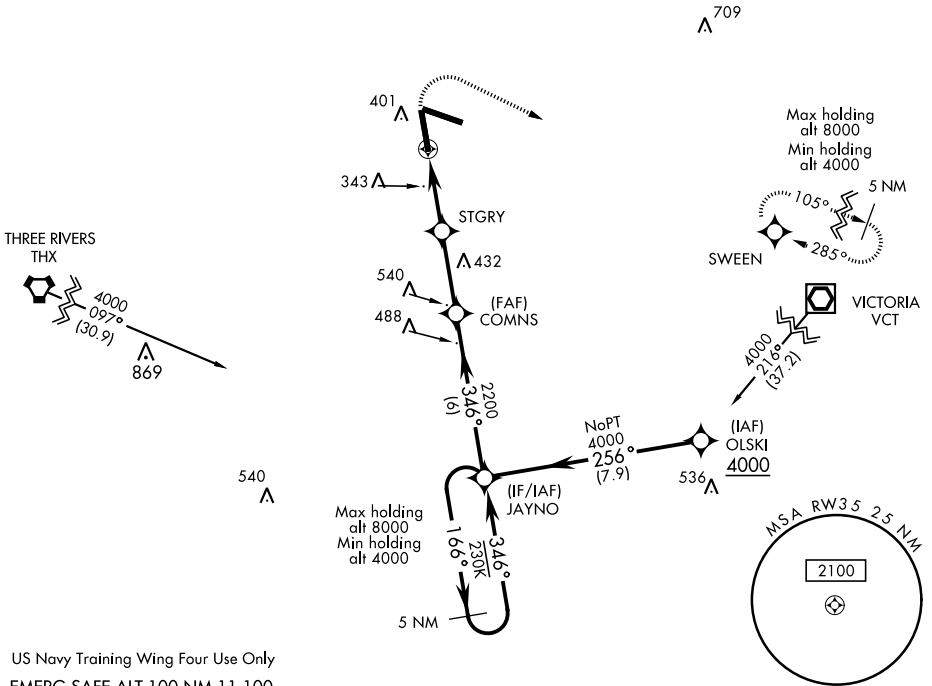
RNP APCH - DME/DME RNP-0.3 NA.

MISSED APPROACH: Climb to 900 then climbing right turn to 4000 direct SWEEN and hold, continue climb-in-hold to 4000.

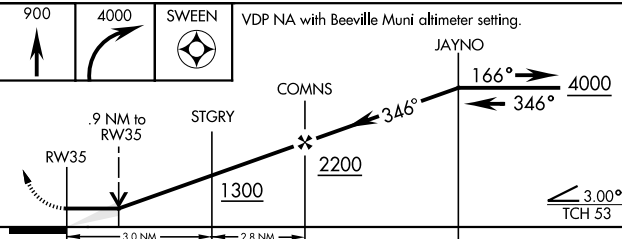
When local altimeter setting not received, use Beeville Muni altimeter setting.

ASOS
353.675

CTAF
132.875 307.075

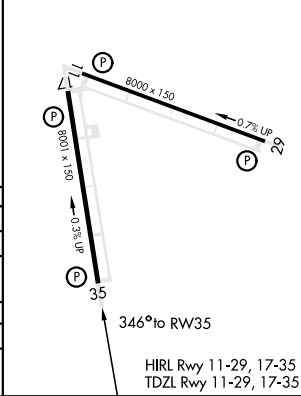


US Navy Training Wing Four Use Only
EMERG SAFE ALT 100 NM 11,100



ELEV 322	TDZE 307
----------	----------

CATEGORY	A	B	C	D
LNAV MDA	640-1 333 (400-1)			
CIRCLING	760-1	780-1	780-1½	880-2
	438 (500-1)	458 (500-1)	458 (500-1½)	558 (600-2)
BEEVILLE MUNI ALTIMETER SETTING MINIMA				
LNAV MDA	680-1 373 (400-1)			
CIRCLING	800-1	478 (500-1)	800-1½	880-2
			478 (500-1½)	558 (600-2)



RNAV (GPS) RWY 35

SC-3, 16 JUN 2022 to 14 JUL 2022

SC-3, 16 JUN 2022 to 14 JUL 2022