


LOC I-RHI <b>111.3</b>	APP CRS <b>091°</b>	Rwy Idg <b>6799</b>
		TDZE <b>1624</b>
		Apt Elev <b>1624</b>

**ILS or LOC RWY 9**  
RHINELANDER/ONEIDA COUNTY (RHI)

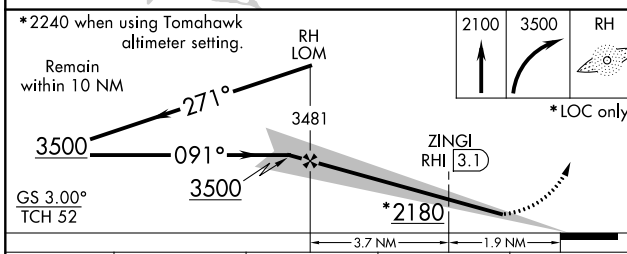
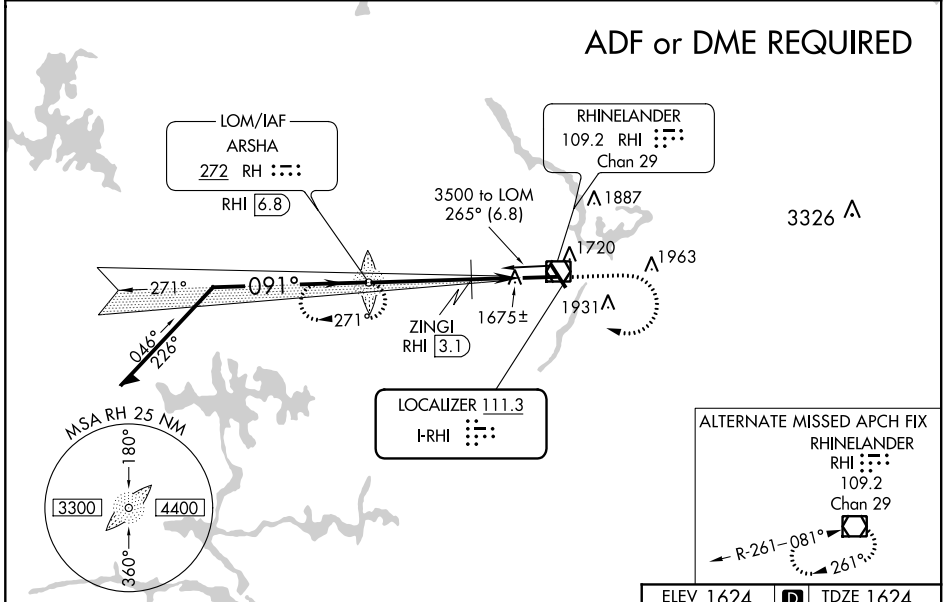
**ADF** required. When local altimeter setting not received, use Tomahawk altimeter setting and increase DA to 1883 feet; increase all MDAs 60 feet and visibility Cat C and D ¼ SM. **\*\*DME from RHI VOR/DME.**

**MALSR**  
  
**MISSED APPROACH:** Climb to 2100 then climbing right turn to 3500 direct ARSHA LOM/RHI 6.8 DME and hold.

ASOS  
**126.825**

MINNEAPOLIS CENTER  
**133.65 281.5**

UNICOM  
**123.0 (CTAF)**



ELEV 1624 TDZE 1624

CATEGORY	A	B	C	D
S-ILS 9		1824-½	200 (200-½)	
S-LOC 9	2180-½	556 (600-½)	2180-1	2180-1¼
CIRCLING	2180-1 556 (600-1)	2260-1 636 (700-1)	2260-1¾ 636 (700-1¾)	2280-2 656 (700-2)
ZINGI FIX MINIMUMS**				
S-LOC 9		2020-½	396 (400-½)	2020-¾ 396 (400-¾)
CIRCLING	2100-1 476 (500-1)	2260-1 636 (700-1)	2260-1¾ 636 (700-1¾)	2280-2 656 (700-2)

	Knots	60	90	120	150	180
Min:Sec	5:36	3:44	2:48	2:14	1:52	

HIRL Rwy 9-27 and 15-33  
REIL Rwy 15, 27 and 33  
FAF to MAP 5.6 NM

EC-3, 16 JUN 2022 to 14 JUL 2022

EC-3, 16 JUN 2022 to 14 JUL 2022