

WAAS CH 69407 W33A	APP CRS 330°	Rwy Idg TDZE 1611 Apt Elev 1624	5201 1611 1624
--	------------------------	---	---

RNAV (GPS) RWY 33

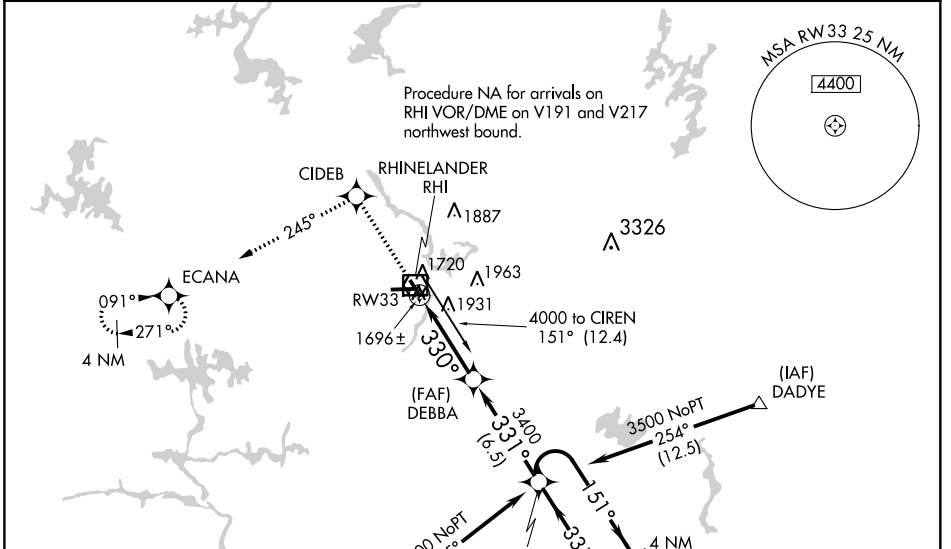
RHINELANDER/ONEIDA COUNTY (RHI)

RNP APCH - GPS.

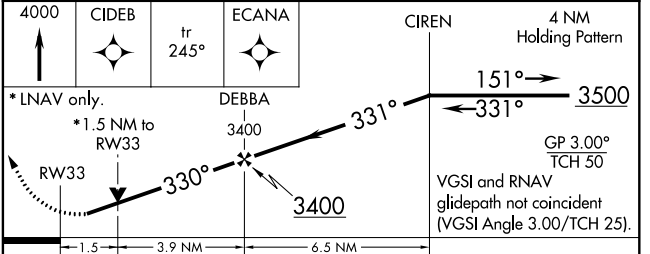
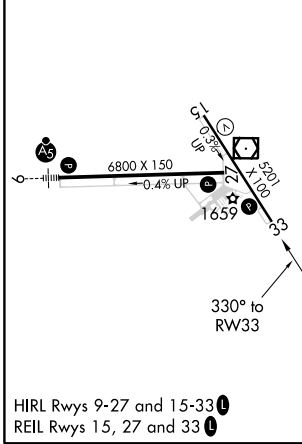
⚠ Baro-VNAV NA when using Tomahawk altimeter setting. For uncompensated Baro-VNAV systems, LNAV/VNAV NA below -18°C or above 54°C. Helicopter visibility reduction below ¾ SM NA. When local altimeter setting not received, use Tomahawk altimeter setting; increase LPV DA to 1921 feet; increase LNAV/VNAV DA to 2316 feet and visibility ¼ SM; increase all MDAs 60 feet and visibility Cat C and D ¼ SM.

MISSED APPROACH:
Climb to 4000 direct CIDEB and on track 245° to ECANA and hold.

ASOS 126.825	MINNEAPOLIS CENTER 133.65 281.5	UNICOM 123.0 (CTAF) 0
------------------------	---	---------------------------------



ELEV 1624	D	TDZE 1611
-----------	----------	-----------



CATEGORY	A	B	C	D
LPV DA		1862-1	250 (300-1)	
LNAV/VNAV DA		2257-2 ¼	645 (700-2 ¼)	
LNAV MDA	2120-1	508 (500-1)	2120-1 ½	508 (500-1 ½)
CIRCLING	2120-1 496 (500-1)	2260-1 636 (700-1)	2260-1 ¾ 636 (700-1 ¾)	2280-2 656 (700-2)

EC-3, 16 JUN 2022 to 14 JUL 2022

EC-3, 16 JUN 2022 to 14 JUL 2022