
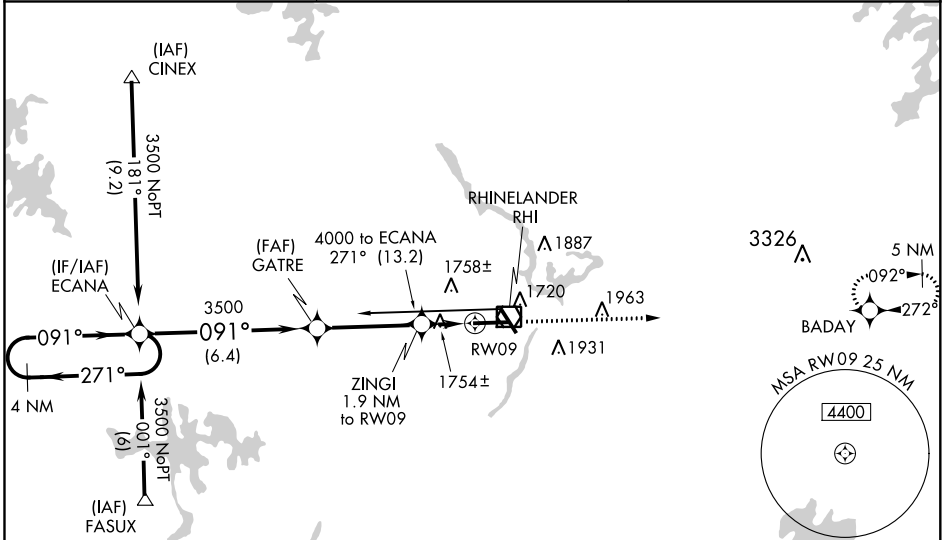


WAAS CH 97715 W09A	APP CRS 091°	Rwy Idg 6799 TDZE 1624 Apt Elev 1624
--	------------------------	---

RNAV (GPS) RWY 9
RHINELANDER/ONEIDA COUNTY (RHI)

RNP APCH - GPS.	MALSRS	 <p>MISSED APPROACH: Climb to 4500 direct BADAY and hold.</p>
<p>▼ Baro-VNAV NA when using Tomahawk altimeter setting. For uncompensated Baro-VNAV systems, LNAV/VNAV NA below -18°C or above 54°C. When local altimeter setting not received, use Tomahawk altimeter setting: increase LPV DA to 1883 feet; increase LNAV/VNAV DA to 2109 and visibility 1/8 SM; increase all MDAs 60 feet and visibility Cat C and D 1/4 SM. For inop MALSRS, increase LNAV/VNAV all Cats visibility to 1 3/8 mile. VDP NA when using Tomahawk altimeter setting.</p>		

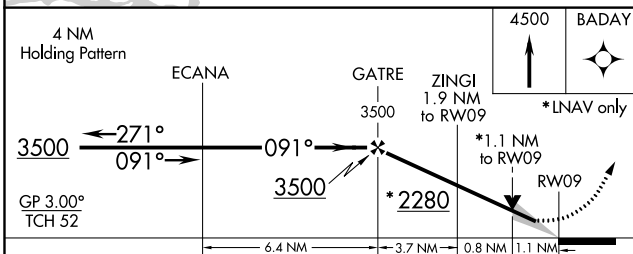
ASOS 126.825	MINNEAPOLIS CENTER 133.65 281.5	UNICOM 123.0 (CTAF) 1
------------------------	---	---------------------------------



EC-3, 16 JUN 2022 to 14 JUL 2022

EC-3, 16 JUN 2022 to 14 JUL 2022

ELEV 1624	D TDZE 1624
-----------	--------------------



CATEGORY	A	B	C	D
LPV DA	1824-1/2		200 (200-1/2)	
LNAV/VNAV DA	2050-1		426 (500-1)	
LNAV MDA	2020-1/2	396 (400-1/2)	2020-5/8	396 (400-5/8)
CIRCLING	2100-1 476 (500-1)	2260-1 636 (700-1)	2260-1 3/4 636 (700-1 3/4)	2280-2 656 (700-2)

Detailed approach diagram for RWY 09. It shows the final approach with a 6800 X 150 runway, a 0.4% up slope, and a 5201 ft elevation. The diagram also shows the missed approach procedure: climb to 4500 ft, then proceed to BADAY. A 5201 ft MSL is also indicated.

HIRL Rwy 9-27 and 15-33 1
REIL Rwy 15, 27 and 33 1