

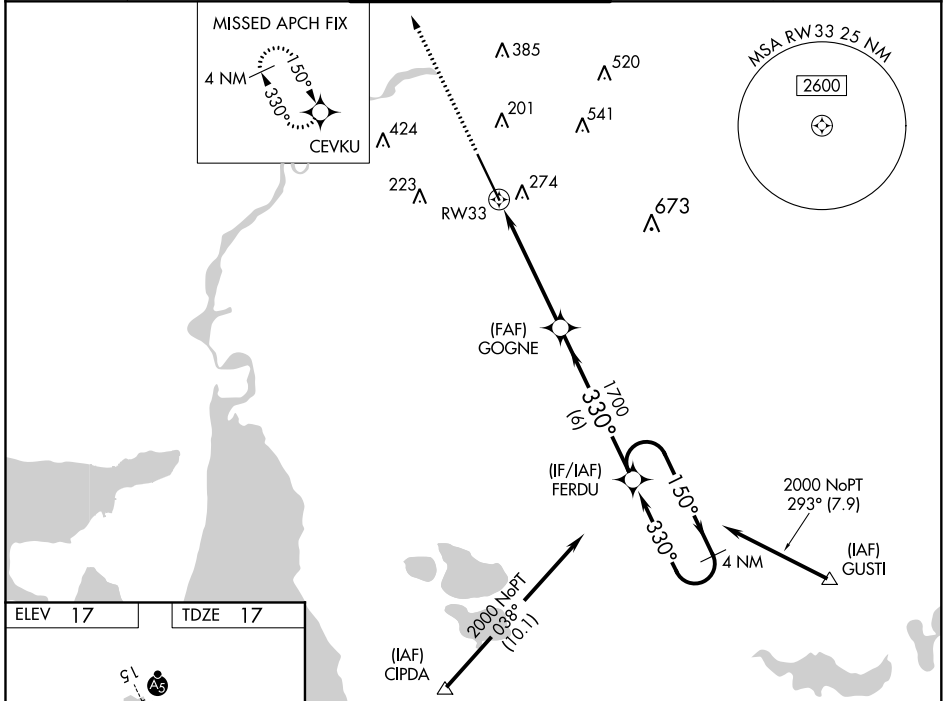
WAAS CH 65817 W33A	APP CRS 330°	Rwy Idg 10702 TDZE 17 Apt Elev 17
--	------------------------	--

RNAV (GPS) RWY 33

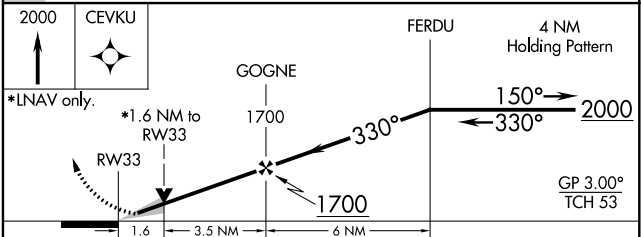
CHENNAULT INTL (CWF')

RNP APCH.		<p>Baro-VNAV NA when using Lake Charles Rgnl altimeter setting. For uncompensated Baro-VNAV systems, LNAV/VNAV NA below -15°C or above 49°C. VDP NA when using Lake Charles Rgnl altimeter setting. When local altimeter setting not received, use Lake Charles ASR Rgnl altimeter setting: increase LPV DA to 232 feet; increase LNAV/VNAV DA to 510 feet; increase all MDA 20 feet and LNAV visibility Cat C ½ SM and Circling Cat D ½ SM.</p>		<p>MISSED APPROACH: Climb to 2000 direct CEVKU and hold.</p>	
-----------	--	--	--	--	--

ATIS 120.0	LAKE CHARLES APP CON ★ 119.8 282.3	CHENNAULT TOWER ★ 124.2 (CTAF) 0 290.4	GND CON 121.65 275.8	UNICOM 122.95
----------------------	--	--	--------------------------------	-------------------------



ELEV 17	TDZE 17
---------	---------



CATEGORY	A	B	C	D
LPV DA	217-¾ 200 (200-¾)			
LNAV/VNAV DA	494-1¾ 477 (500-1¾)			
LNAV MDA	580-1	563 (600-1)	580-1½ 563 (600-1½)	580-1¾ 563 (600-1¾)
C CIRCLING	640-1	623 (700-1)	640-1¾ 623 (700-1¾)	740-2¼ 723 (800-2¼)

SC-4, 16 JUN 2022 to 14 JUL 2022

SC-4, 16 JUN 2022 to 14 JUL 2022