

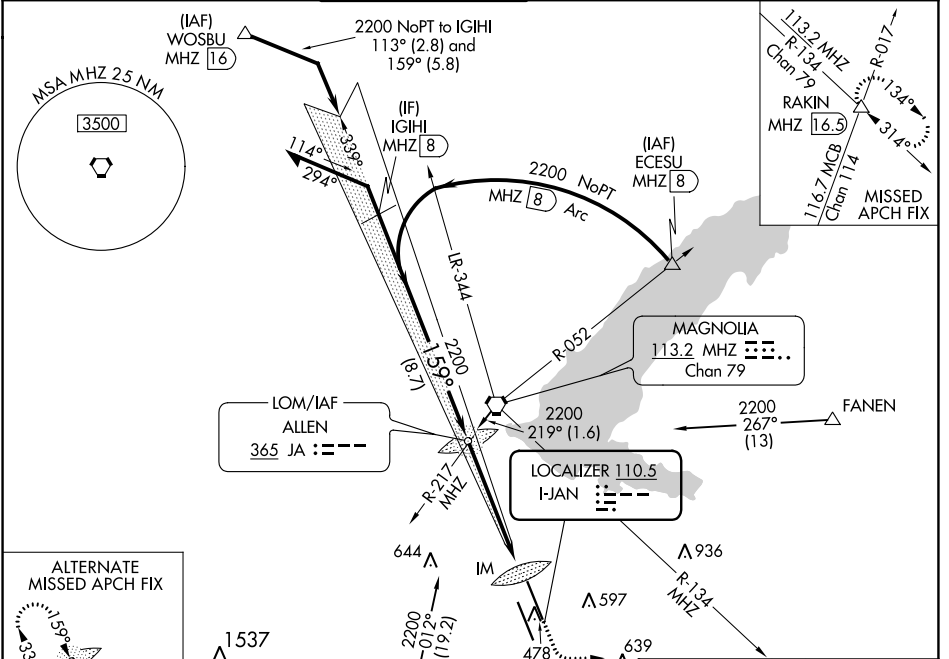
LOC I-JAN <b>110.5</b>	APP CRS <b>159°</b>	Rwy Idg <b>8500</b>
		TDZE <b>312</b>
		Apt Elev <b>346</b>

# ILS RWY 16L (CAT II & III)

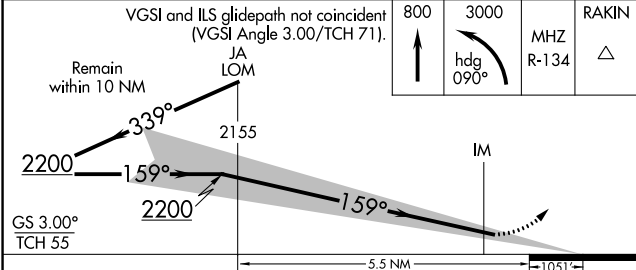
JACKSON-MEDGAR WILEY EVERS INTL (JAN)

<p>▼ When control tower closed, procedure NA.                  ▲ When local altimeter setting not received, procedure NA.                  ASR</p>	<p>ALSF-2</p>	<p>MISSED APPROACH: Climb to 800 then climbing left turn to 3000 on heading 090° and MHz VORTAC R-134 to RAKIN INT/MHZ 16.5 DME and hold.</p>
--	---------------	---

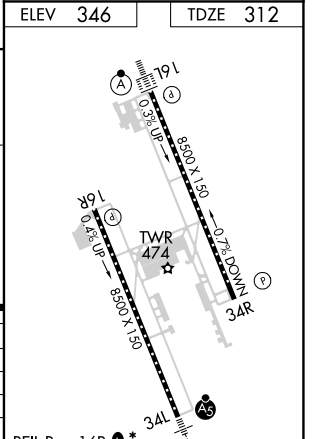
ATIS <b>121.05</b>	JACKSON APP CON* <b>123.9 317.7</b>	JACKSON TOWER* <b>120.9 (CTAF) 0 352.0</b>	GND CON <b>121.7 348.6</b>	<b>120.7 0*</b>	UNICOM <b>122.95</b>
-----------------------	--	---	-------------------------------	-----------------	-------------------------



VGSI and ILS glidepath not coincident (VGSI Angle 3.00/TCH 71).	800	3000	MHZ	RAKIN
Remain within 10 NM	↑	hdg 090°	R-134	△



CATEGORY	A	B	C	D
S-ILS 16L		CAT II RA 119/12 100 DA 412		
S-ILS 16L		CAT IIIA RVR 07		
S-ILS 16L		CAT IIIB RVR 06		
S-ILS 16L		CAT IIIC NA		



**CATEGORY II & III ILS - SPECIAL AIRCREW & AIRCRAFT CERTIFICATION REQUIRED**

REIL Rwy 16R 1\*  
 REIL Rwy 34R 1  
 HIRL Rwy 16L-34R and 16R-34L 0

SC-4, 16 JUN 2022 to 14 JUL 2022

SC-4, 16 JUN 2022 to 14 JUL 2022