

LOC I-JAN <b>110.5</b>	APP CRS <b>159°</b>	Rwy Idg <b>8500</b>
		TDZE <b>312</b>
		Apt Elev <b>346</b>

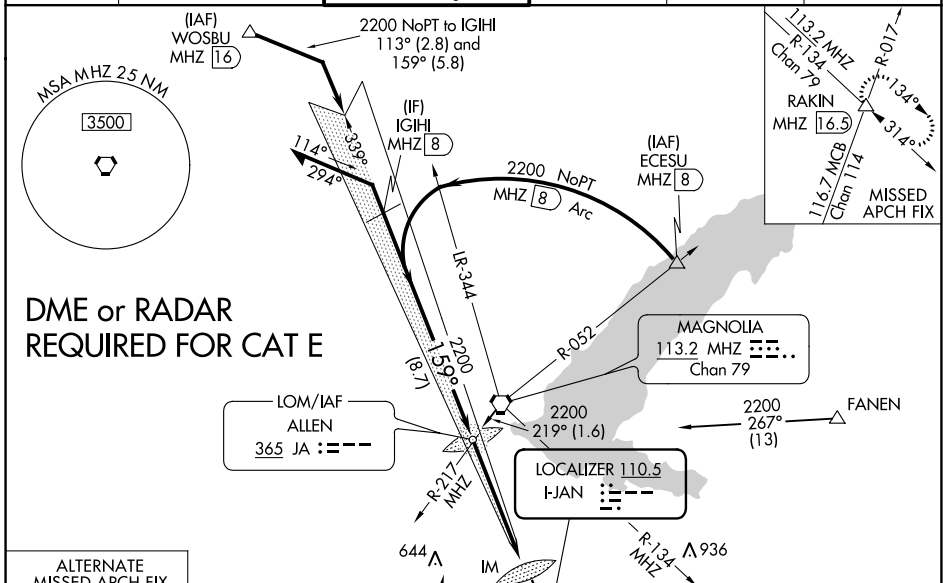
# ILS or LOC RWY 16L

JACKSON-MEDGAR WILEY EVERS INTL (JAN)

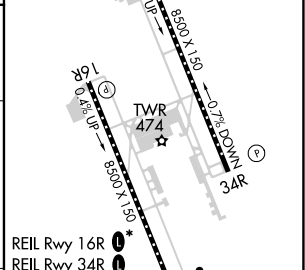
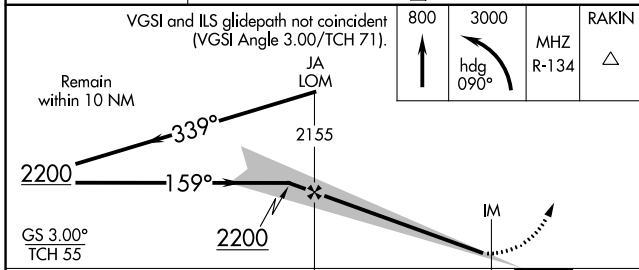
**ASR** Circling NA for Cat E southwest of Rwy 16R-34L. When local altimeter setting not received, use Hawkins Fld altimeter setting and increase all DA 19 feet and all MDA 20 feet. For inop ALS, increase S-ILS 16L Cat E visibility to RVR 4000 and increase S-LOC 16L Cats C/D/E visibility to 1 3/8 SM. For inop ALS when using Hawkins Fld altimeter setting, increase S-ILS 16L Cat E visibility to RVR 4000 and increase S-LOC 16L Cats C/D/E visibility to 1 1/2 SM. Procedure turn NA for Cat E.

**ALS-F-2** MISSED APPROACH: Climb to 800 then climbing left turn to 3000 on heading 090° and MHZ VORTAC R-134 to RAKIN INT/16.5 DME and hold.

ATIS <b>121.05</b>	JACKSON APP CON* <b>123.9 317.7</b>	JACKSON TOWER* <b>120.9 (CTAF) 0 352.0</b>	GND CON <b>121.7 348.6</b>	<b>120.7 0*</b>	UNICOM <b>122.95</b>
-----------------------	--	---	-------------------------------	-----------------	-------------------------



ELEV	346	TDZE	312
------	-----	------	-----



CATEGORY	A	B	C	D	E	
S-ILS 16L	512/18 200 (200-1/2)					
S-LOC 16L	820/24	508 (500-1/2)	820/55		508 (500-1)	
CIRCLING	880-1	900-1	900-1 1/2	960-2	1040-2 1/2	
	534 (600-1)	554 (600-1)	554 (600-1 1/2)	614 (700-2)	694 (700-2 1/2)	
	FAF to MAP 5.5 NM					
	Knots	60	90	120	150	180
	Min:Sec	5:30	3:40	2:45	2:12	1:50

SC-4, 16 JUN 2022 to 14 JUL 2022

SC-4, 16 JUN 2022 to 14 JUL 2022