

# ILS or LOC RWY 34L

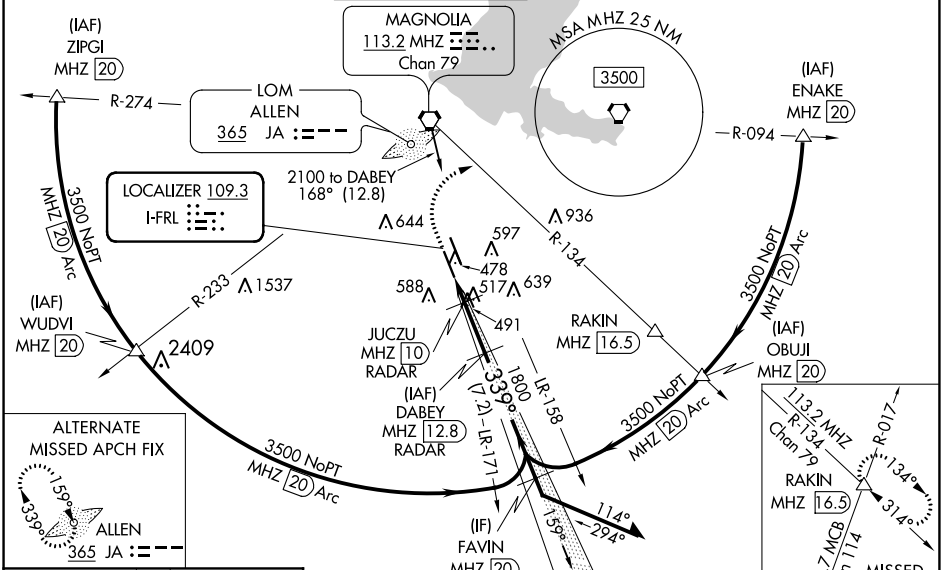
JACKSON-MEDGAR WILEY EVERS INTL (JAN)

LOC I-FRL <b>109.3</b>	APP CRS <b>339°</b>	Rwy Idg TDZE Apt Elev	<b>8500</b> <b>329</b> <b>346</b>
---------------------------	------------------------	-----------------------------	---

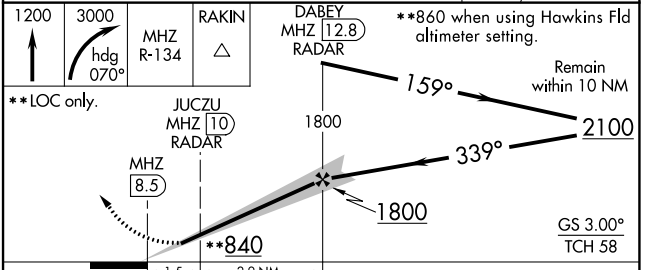
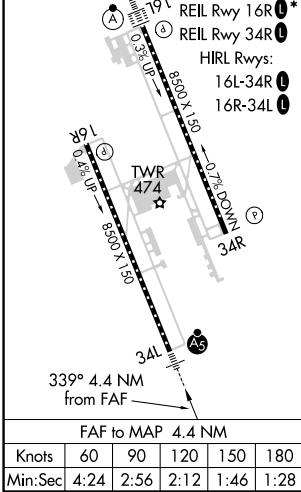
**⚠** Circling NA for Cat E southwest of Rwy 16R-34L. DME or RADAR required. When local altimeter setting not received, use Hawkins Fld altimeter setting and increase all DA 19 feet and all MDA 20 feet; increase S-ILS 34L visibility to RVR 4000. For inop ALS, increase S-ILS 34L Cat E visibility to RVR 4000 and S-LOC 34L all Cats visibility to 1 1/2 SM. For inop ALS when using Hawkins Fld altimeter setting, increase S-LOC 34L Cat E visibility to 1 1/2 SM. Inop table does not apply to S-ILS 34L when using Hawkins Fld altimeter setting. Rwy 34L helicopter visibility reduction below RVR 4000 NA. Procedure turn NA for Cat E. #DME from MHz VORTAC.

**MALS**  
**AS**  
MISSED APPROACH: Climb to 1200 then climbing right turn to 3000 on heading 070° and MHz VORTAC R-134 to RAKIN INT/MHz 16.5 DME and hold.

ATIS <b>121.05</b>	JACKSON APP CON ★ <b>123.9 317.7</b>	JACKSON TOWER ★ <b>120.9 (CTAF) 0 352.0</b>	GND CON <b>121.7 348.6</b>	<b>120.7 0*</b>	UNICOM <b>122.95</b>
-----------------------	---	--	-------------------------------	-----------------	-------------------------



ELEV 346	TDZE 329
----------	----------



CATEGORY	A	B	C	D	E
S-ILS 34L	529/18 200 (200-1/2)				
S-LOC 34L	840/40	511 (500-3/4)	840/55		511 (500-1)
CIRCLING	880-1	900-1	900-1 1/2	960-2	1040-2 1/2
	534 (600-1)	554 (600-1)	554 (600-1 1/2)	614 (700-2)	694 (700-2 1/2)
JUCZU DME MINIMUMS #					
S-LOC 34L	760/40 431 (500-3/4)				
CIRCLING	880-1	900-1	900-1 1/2	960-2	1040-2 1/2
	534 (600-1)	554 (600-1)	554 (600-1 1/2)	614 (700-2)	694 (700-2 1/2)

SC-4, 16 JUN 2022 to 14 JUL 2022

SC-4, 16 JUN 2022 to 14 JUL 2022