

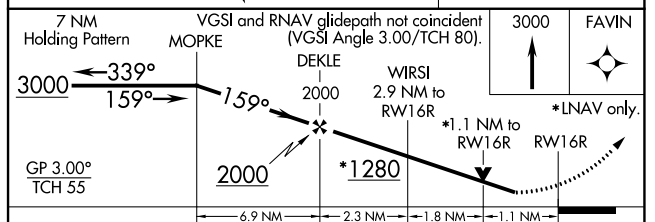
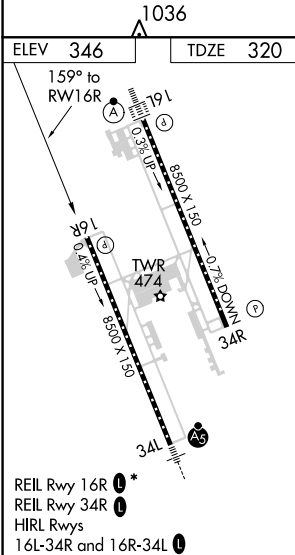
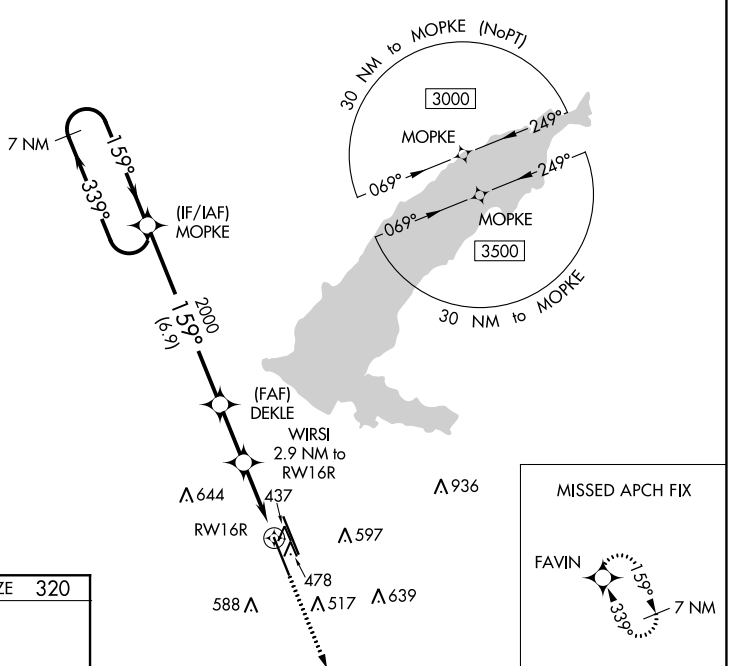
WAAS CH 49211	APP CRS 159°	Rwy Idg TDZE 320	8500
W16B		Apt Elev 346	

RNAV (GPS) RWY 16R

JACKSON-MEDGAR WILEY EVERS INTL (JAN)

RNP APCH.		<p>For uncompensated Baro-VNAV systems, LNAV/VNAV NA below -7°C or above 54°C. Circling NA for Cat E southwest of Rwy 16R-34L. When local altimeter setting not received, use Hawkins Fld altimeter setting and increase all DA 19 feet and all MDA 20 feet, increase LNAV/VNAV all Cats and LNAV Cat C/D/E visibility 1/8 SM. Rwy 16R helicopter visibility reduction below 3/4 SM NA. VDP and Baro-VNAV NA when using Hawkins Fld altimeter setting.</p>			<p>MISSED APPROACH: Climb to 3000 direct FAVIN and hold.</p>	
-----------	--	--	--	--	--	--

ATIS 121.05	JACKSON APP CON* 123.9 317.7	JACKSON TOWER* 120.9 (CTAF) 0 352.0	GND CON 121.7 348.6	120.7 0*	UNICOM 122.95
-----------------------	--	---	-------------------------------	-----------------	-------------------------



CATEGORY	A	B	C	D	E
LPV DA		621-1	301 (300-1)		
LNAV/VNAV DA		638-1	318 (300-1)		
LNAV MDA	720-1	400 (400-1)	720-1 1/8	400 (400-1 1/8)	
C CIRCLING	880-1 534 (600-1)	900-1 554 (600-1)	900-1 1/2 554 (600-1 1/2)	960-2 614 (700-2)	1040-2 1/2 694 (700-2 1/2)

SC-4, 16 JUN 2022 to 14 JUL 2022

SC-4, 16 JUN 2022 to 14 JUL 2022