

MHZ VORTAC 113.2 Chan 79	APP CRS 171°	Rwy Idg 8500 TDZE 312 Apt Elev 346
--	------------------------	---

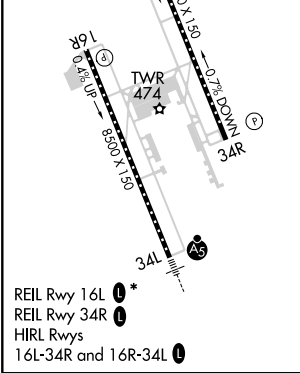
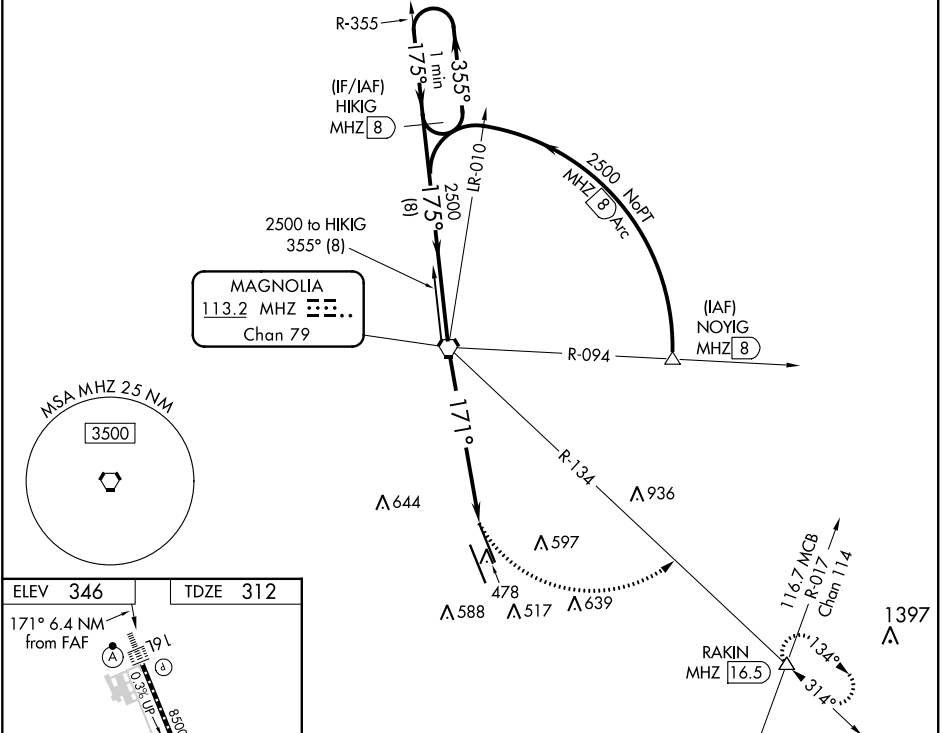
VOR/DME or TACAN Rwy 16L

JACKSON-MEDGAR WILEY EVERS INTL (JAN)

VDP NA with Hawkins Fld altimeter setting. When local altimeter setting not received, use Hawkins Fld altimeter setting and increase all MDA 20 feet; increase S-16L Cats C/D/E visibility to 1½ mile. For inop ALSF, increase S-16L Cats A/B visibility to 1 mile; Cat E to 1½. For inop ALSF when using Hawkins Fld altimeter setting, increase S-16L Cats A/B visibility to 1 mile, and Cats C/D/E visibility to 1½. Circling NA for Cat E southwest of Rwy 16R-34L. Helicopter visibility reduction below ¾ SM NA.

ALSF-2
MISSED APPROACH: Climbing left turn to 3000 on heading 103° and MHZ VORTAC R-134 to RAKIN INT/ MHZ 16.5 DME and hold.

ATIS 121.05	JACKSON APP CON* 123.9 317.7	JACKSON TOWER* 120.9 (CTAF) 0 352.0	GND CON 121.7 348.6	120.7 0*	UNICOM 122.95
-----------------------	--	---	-------------------------------	-----------------	-------------------------



One Minute Holding Pattern	HIKIG MHZ 8	MHZ VORTAC	MHZ 4.9	MHZ 6.4	
2500	355°	175°	175°	171°	
8 NM		4.9 NM		1.5	
3000	hdg 103°	RAKIN MHZ 16.5	314°	13.4°	
CATEGORY	A	B	C	D	E
S-16L	860/40	548 (600-¾)	860/60	548 (600-1¼)	
CIRCLING	880-1 534 (600-1)	900-1 554 (600-1)	900-1½ 554 (600-1½)	960-2 614 (700-2)	1040-2½ 694 (700-2½)

SC-4, 16 JUN 2022 to 14 JUL 2022

SC-4, 16 JUN 2022 to 14 JUL 2022