

# VOR/DME or TACAN RWY 16R

JACKSON-MEDGAR WILEY EVERS INTL (JAN)

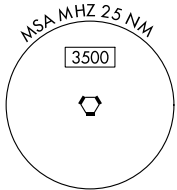
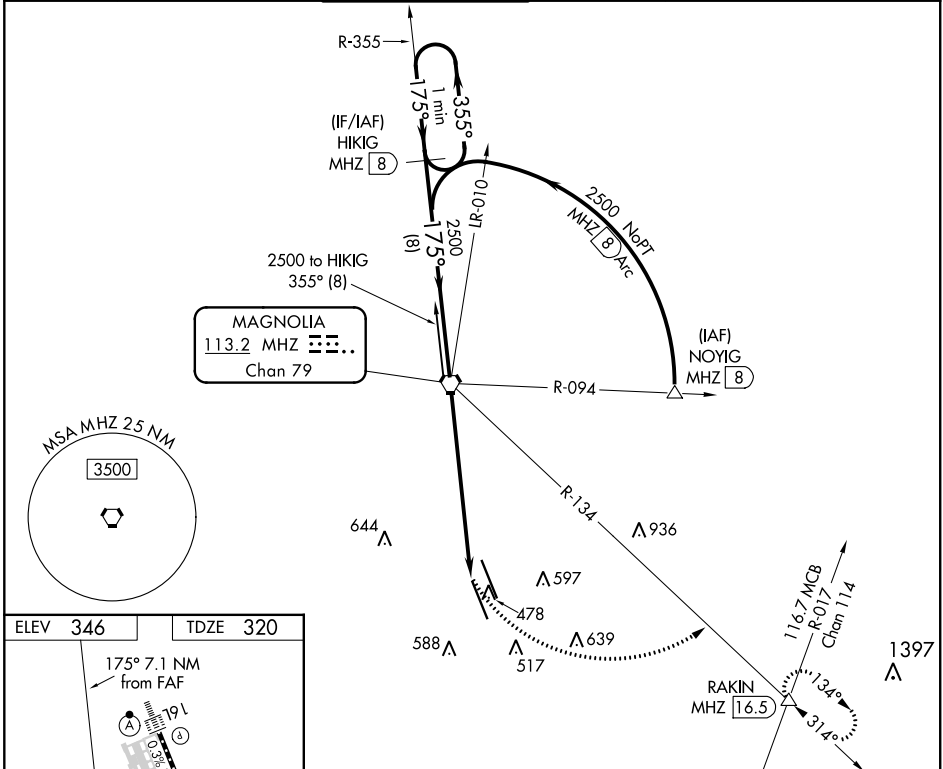
MHZ VORTAC <b>113.2</b> Chan <b>79</b>	APP CRS <b>175°</b>	Rwy Idg <b>8500</b> TDZE <b>320</b> Apt Elev <b>346</b>
--	------------------------	---

**V** VDP NA with Hawkins Fld altimeter setting. When local altimeter setting not received, use Hawkins Fld altimeter setting and increase all MDA 20 feet; increase S-16R Cats C/D/E visibility 1/8 mile. Circling NA for Cat E SW of Rwy 16R-34L. Helicopter visibility reduction below 3/4 SM NA.

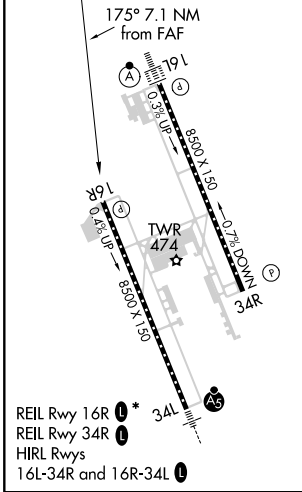
**A** ASR

**MISSED APPROACH:** Climbing left turn to 3000 on heading 103° and MHZ VORTAC R-134 to RAKIN INT/ MHZ 16.5 DME and hold.

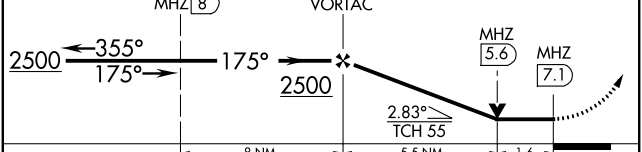
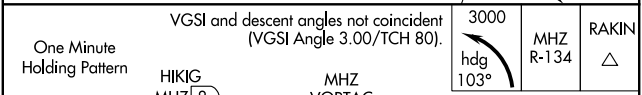
ATIS <b>121.05</b>	JACKSON APP CON * <b>123.9 317.7</b>	JACKSON TOWER * <b>120.9 (CTAF) 352.0</b>	GND CON <b>121.7 348.6</b>	<b>120.7 0*</b>	UNICOM <b>122.95</b>
-----------------------	---	--	-------------------------------	-----------------	-------------------------



ELEV <b>346</b>	TDZE <b>320</b>
-----------------	-----------------



REIL Rwy 16R **1** \*  
REIL Rwy 34R **1**  
HIRL Rwy 16L-34R and 16R-34L **1**



CATEGORY	A	B	C	D	E
S-16R	880-1	560 (600-1)	880-1 1/8	560 (600-1 1/8)	
<b>C</b> CIRCLING	880-1 534 (600-1)	900-1 554 (600-1)	900-1 1/2 554 (600-1 1/2)	960-2 614 (700-2)	1040-2 1/2 694 (700-2 1/2)

SC-4, 16 JUN 2022 to 14 JUL 2022

SC-4, 16 JUN 2022 to 14 JUL 2022