

VORTAC MHZ 113.2 Chan 79	APP CRS 349°	Rwy Idg TDZE Apt Elev	8500 346 346
--	------------------------	-----------------------------	---

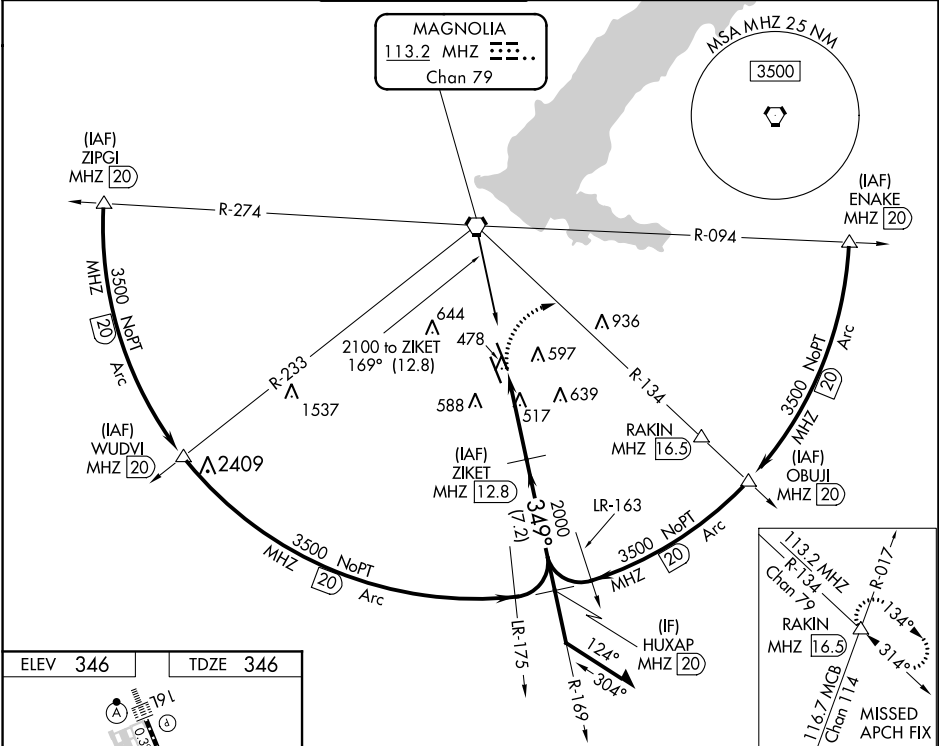
VOR/DME or TACAN RWY 34R

JACKSON-MEDGAR WILEY EVERS INTL (JAN)

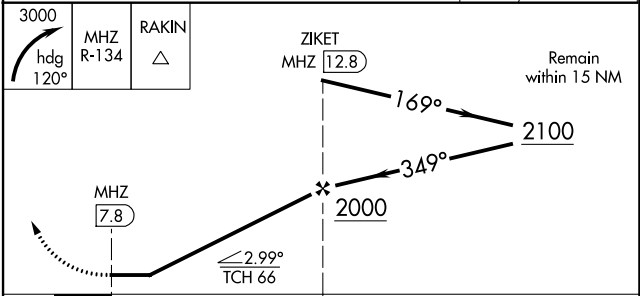
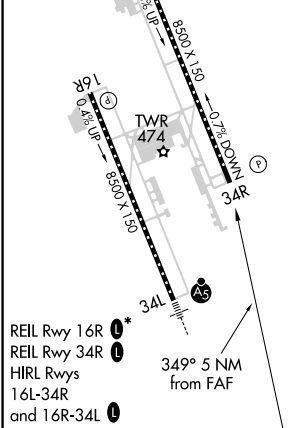
⚠ When local altimeter setting not received, use Hawkins fld altimeter setting and increase all MDA 20 feet; increase S-34R Cats C/D/E visibility 1/8 mile. Circling NA for Cat E southwest of Rwy 16R-34L. Helicopter visibility reduction below 3/4 SM NA.

MISSED APPROACH: Climbing right turn to 3000 on heading 120° and MHZ VORTAC R-134 to RAKIN INT/ MHZ 16.5 DME and hold.

ATIS 121.05	JACKSON APP CON* 123.9 317.7	JACKSON TOWER* 120.9 (CTAF) 352.0	GND CON 121.7 348.6	120.7 0*	UNICOM 122.95
-----------------------	--	---	-------------------------------	-----------------	-------------------------



ELEV 346	TDZE 346
----------	----------



CATEGORY	A	B	C	D	E
S-34R	920/55	574 (600-1)	920-1 5/8	574 (600-1 5/8)	
C CIRCLING	920-1	574 (600-1)	920-1 1/2 574 (600-1 1/2)	960-2 614 (700-2)	1040-2 1/2 694 (700-2 1/2)

SC-4, 16 JUN 2022 to 14 JUL 2022

SC-4, 16 JUN 2022 to 14 JUL 2022